

National Teen Driver Safety Week — October 17–23, 2010

In 2009, approximately 3,000 teens aged 15–19 years, died in motor vehicle crashes, approximately 500 fewer deaths than occurred in 2008 in this age group (1). During 2004–2008, the percentage of drivers aged 16–17 years involved in fatal crashes decreased by 36% (2). Despite these encouraging trends, motor vehicle crashes remain the leading cause of death for teens.

Graduated driver licensing (GDL) programs are widely credited with contributing to recent declines in teen crash fatalities. Evaluations of GDL have demonstrated a 20%–40% reduction in crash risk for the youngest drivers (3). GDL programs provide longer practice periods, limit driving under high-risk conditions for newly licensed drivers, and require greater participation of parents in their teens' learning-to-drive process. This year, during National Teen Driver Safety Week, CDC is launching a new campaign, Parents Are the Key, to inform parents how they can help protect the safety of their teen drivers. Campaign materials are available at <http://www.cdc.gov/parentsarethekey>. CDC also has released the issue brief *Policy Impact: Teen Driver Safety*, which is available at <http://www.cdc.gov/motorvehiclesafety/teenbrief>.

Additional information regarding National Teen Driver Safety Week is available from CDC at http://www.cdc.gov/motorvehiclesafety/teen_drivers/index.html and from the National Highway Traffic Safety Administration at <http://www.nhtsa.gov/Teen-Drivers>.

References

1. National Highway Traffic Safety Administration. Fatality Analysis Reporting System (FARS) encyclopedia. Available at <http://www-fars.nhtsa.dot.gov>. Accessed October 14, 2010.
2. CDC. Drivers aged 16 or 17 years involved in fatal crashes—United States, 2004–2008. *MMWR* 2010;59:1329–34.
3. Shope J. Graduated driver licensing: review of evaluation results since 2002. *J Safety Res* 2007;38:165–75.

Drivers Aged 16 or 17 Years Involved in Fatal Crashes — United States, 2004–2008

Motor vehicle crashes are the leading cause of death among teens in the United States, accounting for approximately one third of deaths in this age group (1). Crash risk is highest during the first years of independent driving (2). To characterize trends in fatal crashes involving drivers aged 16 or 17 years, CDC analyzed data from the Fatality Analysis Report System (FARS) for 2004–2008. This report summarizes the results of that analysis, which indicated that, during 2004–2008, a total of 9,644 passenger vehicle drivers aged 16 or 17 years were involved in fatal crashes. During that period, the annual population-based rate for drivers aged 16 or 17 years involved in fatal crashes declined 38%, from 27.1 per 100,000 population in 2004 to 16.7 in 2008. By state, 5-year annualized rates for drivers aged 16 or 17 years involved in fatal crashes ranged from 9.7 per 100,000 population in New Jersey and New York to 59.6 in Wyoming. To further reduce fatal crashes involving young drivers, states should periodically reexamine and update graduated driver licensing (GDL) programs, and communities should vigorously enforce laws on minimum legal drinking age, blood alcohol concentration (BAC), and safety belt use, all of which can reduce the number of fatal crashes among young drivers.

FARS is a census of fatal traffic crashes in the United States maintained by the National Highway Traffic Safety Administration. For this study, records of drivers involved in fatal crashes during 2004–2008 were examined. A fatal crash

INSIDE

- 1335 HIV Transmission Through Transfusion — Missouri and Colorado, 2008
- 1340 State Medicaid Coverage for Tobacco-Dependence Treatments — United States, 2009
- 1344 Announcements
- 1345 QuickStats



was defined as one in which at least one vehicle occupant or nonoccupant (e.g., bicyclist or pedestrian) involved in the crash died within 30 days of the crash. Analyses were restricted to drivers of passenger vehicles (i.e., automobiles, sport utility vehicles, pickup trucks, and vans). Of the 10,048 drivers aged 16 or 17 years involved in fatal crashes, 9,644 (96%) drove passenger vehicles. U.S. census population estimates for persons aged 16 or 17 years and persons aged ≥ 18 years were used to calculate rates of fatal crash involvement. To examine state-specific rates for drivers aged 16 or 17 years involved in fatal crashes, 2004–2008 crash data and census data were aggregated separately, and an annualized rate was calculated for each state. The annualized rates then were compared with 2008 state-specific fatality rates for all crashes involving passenger vehicles.

During 2004–2008, a total of 9,644 drivers aged 16 or 17 years were involved in 9,494 fatal crashes. A total of 4,705 (50%) crashes involved one vehicle; 3,976 (42%) involved two vehicles; and 813 (8%) involved three or more vehicles. A total of 8,274 (87%) crashes resulted in one fatality, 986 (10%)

resulted in two fatalities, and 234 (3%) resulted in three or more fatalities.

Of the 11,019 persons who died in these crashes, 4,071 (37%) were drivers aged 16 or 17 years; 3,428 (31%) were passengers of those drivers; 1,987 (18%) were drivers of other vehicles (aged ≥ 18 years, aged < 16 years, and of unknown age); and 805 (7.3%) were passengers of those other drivers. Another 728 (6.7%) persons were other road users (e.g., bicyclists or pedestrians).

A total of 6,280 (65%) drivers aged 16 or 17 years involved in fatal crashes were male; 3,429 (36%) of drivers in the age group were reported speeding at the time of the crash. Of the 4,459 (46%) whose BAC levels were known, 3,512 (79%) had zero BAC. Of the 947 drivers with a positive BAC, levels ranged from 0.01 g/dL to 0.55 g/dL, with a median of 0.11 g/dL; 678 (72%) of these drivers had a BAC of ≥ 0.08 g/dL, above the legal limit for drivers aged ≥ 21 years. Drivers aged < 21 years, who cannot purchase alcohol legally, are subject to lower BAC limits in every state (i.e., > 0.00 g/dL, ≥ 0.01 g/dL, or ≥ 0.02 g/dL, depending on the state).

The *MMWR* series of publications is published by the Office of Surveillance, Epidemiology, and Laboratory Services, Centers for Disease Control and Prevention (CDC), U.S. Department of Health and Human Services, Atlanta, GA 30333.

Suggested citation: Centers for Disease Control and Prevention. [Article title]. *MMWR* 2010;59:[inclusive page numbers].

Centers for Disease Control and Prevention

Thomas R. Frieden, MD, MPH, *Director*

Harold W. Jaffe, MD, MA, *Associate Director for Science*

James W. Stephens, PhD, *Office of the Associate Director for Science*

Stephen B. Thacker, MD, MSc, *Deputy Director for Surveillance, Epidemiology, and Laboratory Services*

MMWR Editorial and Production Staff

Ronald L. Moolenaar, MD, MPH, *Editor, MMWR Series*

John S. Moran, MD, MPH, *Deputy Editor, MMWR Series*

Robert A. Gunn, MD, MPH, *Associate Editor, MMWR Series*

Teresa F. Rutledge, *Managing Editor, MMWR Series*

Douglas W. Weatherwax, *Lead Technical Writer-Editor*

Donald G. Meadows, MA, Jude C. Rutledge, *Writer-Editors*

Martha F. Boyd, *Lead Visual Information Specialist*

Malbea A. LaPete, Stephen R. Spriggs, Terraye M. Starr

Visual Information Specialists

Quang M. Doan, MBA, Phyllis H. King

Information Technology Specialists

MMWR Editorial Board

William L. Roper, MD, MPH, Chapel Hill, NC, *Chairman*

Virginia A. Caine, MD, Indianapolis, IN

Jonathan E. Fielding, MD, MPH, MBA, Los Angeles, CA

David W. Fleming, MD, Seattle, WA

William E. Halperin, MD, DrPH, MPH, Newark, NJ

King K. Holmes, MD, PhD, Seattle, WA

Deborah Holtzman, PhD, Atlanta, GA

John K. Iglehart, Bethesda, MD

Dennis G. Maki, MD, Madison, WI

Patricia Quinlisk, MD, MPH, Des Moines, IA

Patrick L. Remington, MD, MPH, Madison, WI

Barbara K. Rimer, DrPH, Chapel Hill, NC

John V. Rullan, MD, MPH, San Juan, PR

William Schaffner, MD, Nashville, TN

Anne Schuchat, MD, Atlanta, GA

Dixie E. Snider, MD, MPH, Atlanta, GA

John W. Ward, MD, Atlanta, GA

TABLE 1. Number and annual rate* of drivers† involved in fatal crashes, by age group — Fatality Analysis Reporting System, United States, 2004–2008

| Age group (yrs) | Total | 2004 | | 2005 | | 2006 | | 2007 | | 2008 | | 2004 to 2008 | |
|-----------------|---------|--------|------|--------|------|--------|------|--------|------|--------|------|----------------|-----------------|
| | | No. | Rate | No. | Rate | No. | Rate | No. | Rate | No. | Rate | No. change (%) | Rate change (%) |
| 16 or 17 | 9,644 | 2,230 | 27.1 | 2,054 | 24.5 | 2,020 | 23.4 | 1,903 | 21.8 | 1,437 | 16.7 | -36 | -38 |
| ≥18 | 214,054 | 45,145 | 20.5 | 45,360 | 20.4 | 43,963 | 19.6 | 42,143 | 18.5 | 37,443 | 16.3 | -18 | -20 |

* Per 100,000 population in age group.

† Of passenger vehicles (i.e., automobiles, sport utility vehicles, pickup trucks, and vans).

From 2004 to 2008, the annual number of drivers aged 16 or 17 years involved in fatal crashes decreased 36%, from 2,230 to 1,437 (Table 1). Continuing a general decline that began in 1996 (Figure), the population-based rate for drivers aged 16 or 17 years involved in fatal crashes decreased 38%, from 27.1 per 100,000 population in 2004 to 16.7 in 2008 (Table 1). During 2004–2008, year-to-year decreases in the rate ranged from 5% from 2005 to 2006 to 23% from 2007 to 2008. In comparison, the rate for drivers aged ≥18 years involved in fatal crashes declined 20%, from 20.5 per 100,000 population in 2004 to 16.3 per 100,000 in 2008. Year-to-year declines in the rate of fatal crash involvement for drivers aged ≥18 years ranged from <1% from 2004 to 2005 to 12% from 2007 to 2008 (Table 1).

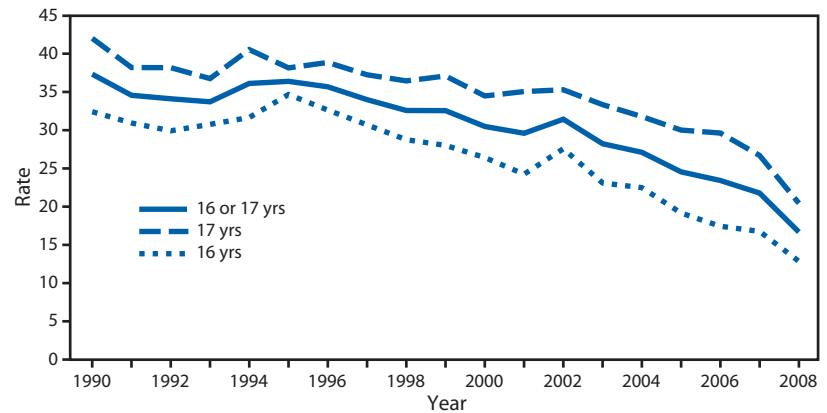
Among states, the 5-year annualized rate for drivers aged 16 or 17 years involved in fatal crashes ranged from 9.7 per 100,000 population in New York and New Jersey to 59.6 in Wyoming (Table 2). These state-specific rates correlated strongly with 2008 state-specific fatality rates from all crashes involving passenger vehicles (Pearson correlation coefficient = 0.8) (Table 2).

Reported by

Shults RA, PhD, Ali B, MPH, Div of Unintentional Injury Prevention, National Center for Injury Prevention and Control, CDC.

Editorial Note

The results described in this report indicate that the population-based rate for drivers aged 16 or 17 years involved in fatal crashes continued to decline substantially during 2004–2008, most notably from 2007 to 2008, when the rate decreased 23%. Among drivers aged ≥18 years, the rate decreased 12% from 2007 to 2008. Reasons for the decreases in rates of involvement in fatal crashes are unknown but they have been attributed, in part, to decreases in the number of vehicle miles traveled (particularly

FIGURE. Annual rate* for drivers† aged 16 or 17 years involved in fatal crashes, by age group — Fatality Analysis Reporting System, United States, 1990–2008

* Per 100,000 population in age group.

† Of passenger vehicles (i.e., automobiles, sport utility vehicles, pickup trucks, and vans).

discretionary travel) because of rising gasoline prices and adverse economic conditions (3). Economic downturns are believed to produce greater cutbacks in travel for drivers with limited funds, including teens (3). Additionally, some teens might delay obtaining drivers licenses for financial reasons during adverse economic conditions, reducing the number of overall miles driven by teens.

The decline during 2004–2008 in the rate of young drivers involved in fatal crashes extends a long-term downward trend (2). From 1996 to 2008, the rate for drivers aged 16 or 17 years involved in fatal crashes fell approximately 50%, from 36.0 per 100,000 population (2) to 16.7. GDL programs are widely credited with contributing to this decline. A recent review of GDL evaluations concluded that the programs have reduced young driver crash risk by approximately 20% to 40% (4). First implemented in the United States in 1996 in Florida, GDL programs now operate in 49 states and the District of Columbia.* The programs initially limit teens' independent driving

* Additional information available at <http://www.ihs.org/laws/graduatedlicenseintro.aspx>.

TABLE 2. Number and 5-year annualized rate* for drivers† aged 16 or 17 years involved in fatal crashes and 2008 fatality rate from all crashes involving passenger vehicles, by state‡ — Fatality Analysis Reporting System, United States, 2004–2008

| State | 2004 | 2005 | 2006 | 2007 | 2008 | 5-year annualized rate, 2004–2008 [¶] | Fatality rate from all crashes involving passenger vehicles, 2008 [¶] |
|----------------------|------|------|------|------|------|--|--|
| Alabama | 80 | 63 | 71 | 53 | 45 | 48.0 | 18.7 |
| Alaska | 4 | 1 | 5 | 10 | 4 | 21.4 | 7.4 |
| Arizona | 58 | 40 | 47 | 33 | 35 | 24.5 | 11.9 |
| Arkansas | 41 | 35 | 35 | 28 | 24 | 40.9 | 18.2 |
| California | 145 | 143 | 136 | 130 | 67 | 11.6 | 8.0 |
| Colorado | 50 | 33 | 29 | 30 | 21 | 25.0 | 9.5 |
| Connecticut | 19 | 13 | 12 | 12 | 12 | 13.8 | 6.3 |
| Delaware | 16 | 8 | 6 | 8 | 4 | 35.8 | 12.4 |
| District of Columbia | 3 | 0 | 0 | 0 | 0 | —** | 4.6 |
| Florida | 140 | 149 | 137 | 138 | 110 | 28.8 | 14.1 |
| Georgia | 79 | 85 | 83 | 83 | 66 | 29.2 | 13.6 |
| Hawaii | 9 | 2 | 3 | 1 | 2 | — | 6.8 |
| Idaho | 13 | 21 | 15 | 15 | 9 | 32.7 | 13.1 |
| Illinois | 78 | 69 | 86 | 80 | 31 | 18.9 | 7.1 |
| Indiana | 73 | 57 | 59 | 49 | 47 | 31.6 | 11.3 |
| Iowa | 29 | 26 | 27 | 33 | 16 | 30.9 | 11.9 |
| Kansas | 26 | 29 | 25 | 30 | 19 | 31.9 | 11.9 |
| Kentucky | 50 | 50 | 52 | 37 | 31 | 38.2 | 16.7 |
| Louisiana | 59 | 27 | 34 | 37 | 30 | 28.4 | 18.7 |
| Maine | 16 | 6 | 18 | 10 | 6 | 30.1 | 9.9 |
| Maryland | 39 | 38 | 31 | 29 | 31 | 20.7 | 9.5 |
| Massachusetts | 25 | 23 | 27 | 22 | 13 | 12.6 | 4.9 |
| Michigan | 76 | 58 | 50 | 63 | 47 | 19.6 | 8.8 |
| Minnesota | 47 | 43 | 42 | 29 | 22 | 24.4 | 7.4 |
| Mississippi | 47 | 55 | 41 | 40 | 26 | 47.6 | 25.0 |
| Missouri | 80 | 83 | 64 | 57 | 48 | 39.4 | 14.6 |
| Montana | 6 | 6 | 6 | 4 | 13 | 25.0 | 19.7 |
| Nebraska | 18 | 20 | 21 | 28 | 18 | 40.8 | 10.4 |
| Nevada | 15 | 19 | 16 | 13 | 11 | 22.1 | 10.7 |
| New Hampshire | 17 | 4 | 6 | 12 | 4 | 22.6 | 9.2 |
| New Jersey | 12 | 33 | 33 | 18 | 21 | 9.7 | 6.1 |
| New Mexico | 19 | 19 | 18 | 12 | 17 | 29.2 | 15.6 |
| New York | 65 | 58 | 53 | 55 | 33 | 9.7 | 5.3 |
| North Carolina | 89 | 79 | 72 | 86 | 57 | 31.9 | 14.0 |
| North Dakota | 3 | 2 | 13 | 10 | 6 | 37.7 | 13.4 |
| Ohio | 73 | 73 | 73 | 61 | 62 | 20.7 | 8.9 |
| Oklahoma | 42 | 42 | 39 | 37 | 31 | 37.4 | 18.2 |
| Oregon | 18 | 19 | 15 | 18 | 5 | 14.7 | 9.5 |
| Pennsylvania | 78 | 71 | 60 | 82 | 55 | 19.8 | 9.9 |
| Rhode Island | 6 | 6 | 5 | 6 | 3 | 18.0 | 5.4 |
| South Carolina | 41 | 36 | 51 | 39 | 30 | 32.0 | 18.4 |
| South Dakota | 6 | 8 | 10 | 8 | 12 | 37.3 | 13.1 |
| Tennessee | 67 | 69 | 61 | 56 | 42 | 35.4 | 15.0 |
| Texas | 172 | 161 | 145 | 149 | 121 | 21.6 | 11.9 |
| Utah | 22 | 17 | 21 | 15 | 9 | 20.2 | 8.5 |
| Vermont | 6 | 3 | 6 | 4 | 4 | 25.4 | 11.1 |
| Virginia | 57 | 48 | 49 | 42 | 48 | 23.5 | 9.6 |
| Washington | 20 | 25 | 38 | 28 | 19 | 14.4 | 6.8 |
| West Virginia | 13 | 14 | 15 | 12 | 9 | 27.1 | 18.5 |
| Wisconsin | 56 | 55 | 50 | 39 | 34 | 29.0 | 9.3 |
| Wyoming | 7 | 10 | 9 | 12 | 7 | 59.6 | 24.8 |

* Per 100,000 population in age group.

† Of passenger vehicles (i.e., automobiles, sport utility vehicles, pickup trucks, and vans).

‡ Includes District of Columbia.

¶ Pearson correlation coefficient = 0.8. Compares state-level annualized rates for drivers aged 16 or 17 years involved in fatal crashes during 2004–2008 with 2008 fatality rates from all crashes involving passenger vehicles.

** Rates suppressed because numerators were <20.

What is already known on this topic?

Teen drivers have the highest motor vehicle crash risk of any age group, and crashes are the leading cause of death among teens in the United States.

What is added by this report?

The national rate for drivers aged 16 or 17 years involved in fatal crashes declined 38% from 2004 to 2008 to 16.7 per 100,000 population; however, rates among states ranged from 9.7 to 59.6.

What are the implications for public health practice?

To further reduce crashes among young drivers, states should ensure that their graduated driver licensing programs include all effective measures, including extended learner periods, nighttime driving restrictions, and passenger restrictions.

under various high-risk conditions, such as nighttime driving or carrying teen passengers. All U.S. GDL programs include a nighttime driving restriction, and 42 states and the District of Columbia include a teen passenger restriction. CDC recommends that families of newly licensed teen drivers actively enforce GDL requirements with a parent-teen driving contract (5). Other factors that likely contributed to the long-term decline in fatal crashes involving young drivers include improvements in vehicle and road safety, increased seat belt use, and reductions in driving after drinking alcohol (6).

State-specific rates of drivers aged 16 or 17 years involved in fatal crashes varied by sixfold. By state, the strong correlation between rates for young drivers involved in fatal crashes and fatality rates from all crashes involving passenger vehicles suggests that state-specific differences in the driving environment (e.g., degree of urbanization, speed limits, amounts and types of travel, weather, state traffic laws, rates of licensure, and emergency-care capabilities) have similar effects on fatal crash risk for drivers of all ages.[†] The relatively low rates of crash involvement for young drivers in New Jersey and New York might be related to licensing policies. New Jersey is the only state with a minimum licensing age of 17 years; in New York City, the minimum age is 18 years, except for persons who take a state-approved driver education course and meet other requirements, who may be licensed at aged 17 years.

The findings in this report are subject to at least four limitations. First, population-based crash rates do not account for driving exposure. This limitation is of particular concern because the age at which teens may begin to drive independently varies by state from 14 years to 17 years; therefore, the proportion of persons aged 16 or 17 years who are eligible to drive without adult supervision varies widely by state. Ideally, studies of young driver crash risk would include measures such as the number of miles driven or number of licensed teen drivers. Reliable data on these driving exposure measures are not readily available for research (2,7). To help facilitate collection of data on driving exposure, the Transportation Research Board's Subcommittee on Young Drivers recently identified documenting the amount and type of driving done by teens as one of five high-priority research needs (7). Second, the two variables used in calculating the Pearson correlation coefficient were not completely independent because fatalities resulting from crashes involving drivers aged 16 or 17 years were included in the 2008 state-specific fatality rates for all crashes involving passenger vehicles. The effect is small, however, because only 5% of passenger vehicle fatalities in 2008 involved a driver aged 16 or 17 years. Third, any fatalities that occur >30 days postcrash are excluded from FARS. Finally, caution should be used in interpreting the differences in fatal crash involvement rates among states because many factors that vary by state contribute to crash risk.

GDL programs vary in makeup; the more comprehensive programs are associated with larger crash reductions (8). To further reduce crashes among young drivers, states should ensure that their GDL programs include all of the components with demonstrated effectiveness, including extended learner periods, nighttime driving restrictions, and passenger restrictions (9). As GDL programs evolve and additional evaluation results become available, states should reexamine their programs and consider implementing additional components that have been proven effective. Additionally, communities should vigorously enforce existing laws known to be effective among young drivers and the general driving population, including laws on minimum legal drinking age, BAC, and safety belt use. Information regarding the effectiveness of these strategies is available at <http://www.thecommunityguide.org/mvoi/index.html>.

[†] Additional information available at http://www.ihs.org/research/fatality_facts_2008/stateystate.html.

Acknowledgments

The findings in this report are based, in part, on the contributions of T Lindsey, National Highway Traffic Safety Admin, District of Columbia, and AF Williams, PhD.

References

1. CDC. WISQARS (Web-based Injury Statistics Query and Reporting System). Atlanta, GA: US Department of Health and Human Services, CDC; 2010. Available at <http://www.cdc.gov/injury/wisqars/index.html>. Accessed October 18, 2010.
2. Ferguson SA, Teoh ER, McCartt AT. Progress in teenage crash risk during the last decade. *J Safety Res* 2007;38:137–45.
3. Sivak M. Is the U.S. on the path to the lowest motor vehicle fatalities in a decade? Ann Arbor, MI: University of Michigan Transportation Research Institute; 2008. Available at <http://deepblue.lib.umich.edu/bitstream/2027.42/60424/1/100969.pdf>. Accessed October 18, 2010.
4. Shope J. Graduated driver licensing: review of evaluation results since 2002. *J Safety Res* 2007;38:166–75.
5. CDC. Parents Are the Key Campaign. US Department of Health and Human Services, CDC; 2010. Available at <http://www.cdc.gov/parentsarethekey/about/index.html>. Accessed October 18, 2010.
6. CDC. Achievements in public health, 1900–1999 motor-vehicle safety: a 20th century public health achievement. *MMWR* 1999;48:369–74.
7. Transportation Research Board Subcommittee on Young Drivers. Future directions for research on motor vehicle crashes and injuries involving teenage drivers. Washington, DC: Transportation Research Board; 2009. Available at <http://claire.hsrc.unc.edu/~foss/2008rpt.pdf>. Accessed October 18, 2010.
8. McCartt AT, Teoh ER, Fields M, Braitman KA, Hellinga LA. Graduated licensing laws and fatal crashes of teenage drivers: a national study. *Traffic Inj Prev* 2010;11:240–8.
9. Williams AF. Contribution of the components of graduated driver licensing to crash reduction. *J Safety Res* 2007;38:177–84.

HIV Transmission Through Transfusion — Missouri and Colorado, 2008

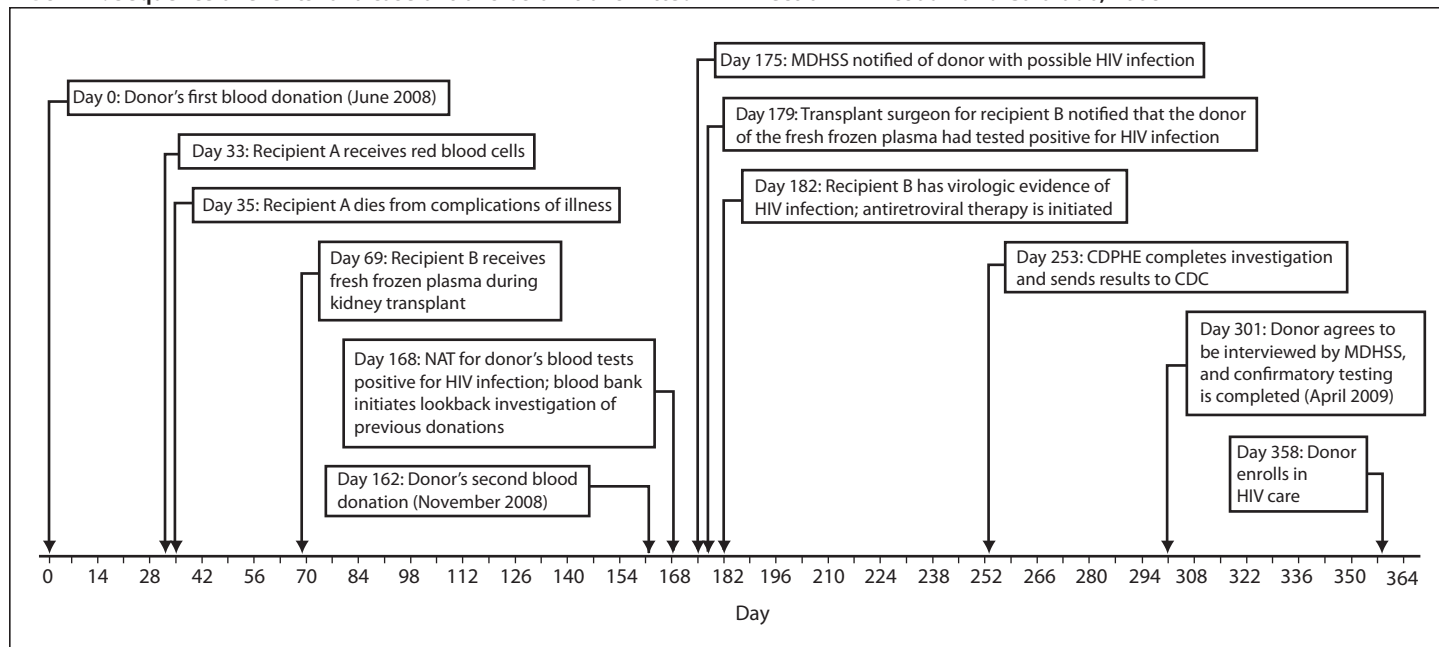
Transmission of human immunodeficiency virus (HIV) through transfusion of contaminated blood components was documented in the United States in 1982 (1). Since then, the risk for transfusion-transmitted HIV infection has been almost eliminated by the use of questionnaires to exclude donors at higher risk for HIV infection and the use of highly sensitive laboratory screening tests to identify infected blood donations. The risk for acquiring HIV infection through blood transfusion today is estimated conservatively to be one in 1.5 million, based on 2007–2008 data (2). This report describes the first U.S. case of transfusion-transmitted HIV infection reported to CDC since 2002 (3). A blood center in Missouri discovered that blood components from a donation in November 2008 tested positive for HIV infection. A lookback investigation determined that this donor had last donated in June 2008, at which time he incorrectly reported no HIV risk factors and his donation tested negative for the presence of HIV. One of the two recipients of blood components from this donation, a patient undergoing kidney transplantation,

was found to be HIV infected, and an investigation determined that the patient's infection was acquired from the donor's blood products. Even though such transmissions are rare, health-care providers should consider the possibility of transfusion-transmitted HIV in HIV-infected transfusion recipients with no other risk factors.

Case Reports

Donor. In June 2008, a man in his forties donated whole blood at a blood center in Missouri (Figure 1). He was a repeat blood donor who reported no HIV risk factors on the routine eligibility screening questionnaire. He was not compensated for his blood donation. His whole blood donation was screened at a reference laboratory for HIV by enzyme immunoassay (EIA) (Genetic Systems HIV-1/HIV-2 Plus O EIA, Bio-Rad Laboratories, Redmond, Washington) and by nucleic acid amplification testing of minipools of plasma specimens (MP-NAT) from 16 donations (Procleix HIV-1 Nucleic Acid Test, Gen Probe, San Diego, California); both tests were negative.

FIGURE 1. Sequence of events for a case of transfusion-transmitted HIV infection — Missouri and Colorado, 2008



Abbreviations: HIV = human immunodeficiency virus; NAT = nucleic acid amplification testing; MDHSS = Missouri Department of Health and Senior Services; CDPHE = Colorado Department of Public Health and Environment.

Components from this donation later were transfused into two recipients. No specimens from this donation were stored. In November 2008, the man donated blood again at the same blood center and again reported no risk factors on the routine eligibility screening questionnaire. At that time, his blood tested positive for HIV by EIA, MP-NAT, and indirect immunofluorescence assay (Fluorognost HIV-1 IFA, Sanochemia Corporation, Vienna, Austria). The man was placed on the list of donors who are indefinitely ineligible for future donation, all products from this donation were destroyed, and the man was notified by the blood center of his probable HIV infection. The Missouri Department of Health and Senior Services (MDHSS) was notified of this case on December 4, 2008. Because of the rare possibility that the donor might have been infected shortly before his June 2008 donation and donated blood that contained HIV at a concentration too low to be detected, an investigation was initiated to determine whether recipients of the June donation had been infected with HIV, consistent with regulatory requirements to investigate such events.

Initially, the donor declined repeated contacts by MDHSS to be interviewed. In April 2009, he agreed to a brief interview with MDHSS, and an OraQuick rapid HIV test (OraSure Technologies, Bethlehem, Pennsylvania) was performed. This test was reactive and confirmed by a positive Western blot at MDHSS. During his interview, the donor reported he was married but had sex with both men and women outside of his marriage, including just before his June 2008 donation. He indicated that the sex often was anonymous and occurred while he was intoxicated.

Recipients. The investigation initiated by the blood center identified two recipients of blood components (packed red blood cells and fresh frozen plasma) derived from the donor's June 2008 donation. In July 2008, one unit of packed red blood cells from the donor was transfused into a patient in Arkansas during cardiac surgery. This patient died 2 days later from cardiac disease; no premortem or postmortem material was available for testing, and it was unknown whether the patient had been infected with HIV.

In August 2008, one unit of fresh frozen plasma from the donor was transfused into a patient receiving a kidney transplant in Colorado. The recipient's most recent negative serum test for HIV infection (using HIV EIA) was in July 2005. The patient had been

receiving regular hemodialysis for management of kidney failure since July 2005. From that date to the date of kidney transplantation, the patient reported no behavioral or health-care-related risk factors for HIV infection and did not receive blood components. The kidney donor tested negative for HIV infection by EIA and NAT at the time of organ donation.

In December 2008, MDHSS notified the Colorado Department of Public Health and Environment (CDPHE) that the plasma was from a donor who subsequently tested positive for HIV, and CDPHE notified the recipient's transplant surgeon. When the recipient visited the transplant clinic in December 2008, serum was nonreactive by HIV EIA, but plasma HIV RNA viral load was 7,240 copies/mL, and CD4 cell count was very low (48 cells/ μ L). At this time, the recipient was placed on antiretroviral therapy. The patient also was receiving mycophenolic acid, a drug used to prevent rejection in organ transplantation that is also a potent inhibitor of both lymphocyte proliferation and HIV replication in CD4⁺ T cells and macrophages. Physical examination demonstrated no other signs or symptoms of HIV infection. After antiretroviral therapy was initiated, the patient's HIV RNA viral load became undetectable, and CD4 cell count increased to 88 cells/ μ L in June 2009. HIV EIA repeated in April 2009 was reactive, but the Western blot was indeterminate, with reactivity to the nonviral p38 and p42 bands and weak reactivity to gp120.

HIV DNA from blood specimens collected from the donor and the recipient was amplified and sequenced at CDC. Comparison of these sequences demonstrated that the virus from the donor and recipient were greater than 99% identical, confirming that the donor's 2008 donation was the source of the recipient's HIV infection.

Reported by

B Laffoon, Missouri Dept of Health and Senior Svcs. A Crutchfield, Colorado Dept of Public Health and Environment. M Levi, MD, Univ of Colorado at Denver. WA Bower, MD, M Kuehnert, MD, Office of Blood, Organ, and Other Tissue Safety, Div Health Care Quality Promotion, National Center for Emerging and Zoonotic Infectious Diseases; JT Brooks, MD, RM Selik MD, WM Switzer, MPH, W Heneine, PhD, A Shankar, MS, MSc, AD Iuliano, PhD, Div of HIV/AIDS Prevention, National Center for HIV, Hepatitis, STD, and Tuberculosis Prevention, CDC.

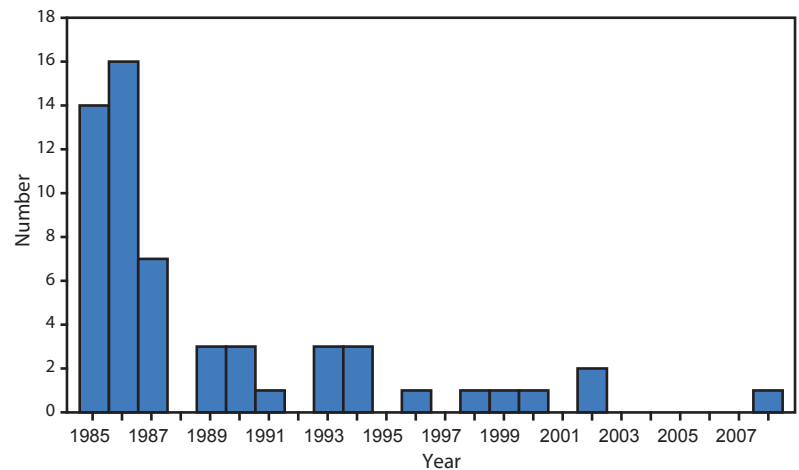
Editorial Note

This report describes the first U.S. case of transfusion-transmitted HIV infection reported* to CDC since 2002 (3) (Figure 2). The sequence of events in this case is consistent with transmission by transfusion of HIV-contaminated plasma collected from a donor during the eclipse period of acute infection (i.e., the interval between infection and the development of detectable concentrations of HIV RNA in plasma) to a recipient treated with medication that suppressed HIV replication, reduced the CD4 lymphocyte count, and blunted the humoral response to HIV infection.

In 1999, U.S. blood banks implemented HIV NAT for blood donations to reduce HIV transmission from recently infected donors. NAT can detect the presence of HIV earlier in the course of infection than serologic methods, which only detect antibodies against HIV, thus reducing the window period (i.e., the interval between infection and development of detectable HIV markers in blood) from 22 days to approximately 10–15 days (4,5). However, NAT cannot detect HIV infections during the eclipse period, estimated to average 9 days based on limited data (6).

The Food and Drug Administration (FDA) requires blood centers to assess donor eligibility using a screening questionnaire and to test donations for infections to reduce the risk for transfusion-transmitted disease.† FDA currently requires testing blood donations for HIV using both licensed serologic testing and NAT, which can detect HIV RNA at a minimum concentration of approximately 5.5 copies/mL.§ NAT can be conducted on individual specimens (ID-NAT) or pooled specimens (MP-NAT). The number of specimens pooled for MP-NAT is based on manufacturer's specifications and FDA's test sensitivity requirements.¶ The dilution effect inherent

FIGURE 2. Number of cases of transfusion-transmitted HIV infection from contaminated blood products, by transfusion year — United States, 1985–2008



in screening by MP-NAT makes this method slightly less sensitive than ID-NAT (3.8 compared with 6.9 infections prevented per year, respectively); however, ID-NAT is substantially less cost effective (7).

Widespread adoption of effective HIV testing methods to screen donated blood has greatly reduced the risk for transfusion-transmitted HIV infection. The modeled risk for HIV infection from transfusion of blood products in the United States declined from one in 450,000–600,000 donations in 1995 to one in 2,135,000 donations from 1995 to 2001 after the introduction of NAT in 1999 (8) and was recently updated to one in 1,467,000 based on data from 2007–2008, which incorporates the increased incidence of HIV among blood donors (2). However, even the most sensitive screening technologies currently available cannot identify the presence of HIV infection during the first few days after infection, when neither HIV RNA nor HIV-specific antibodies have reached detectable levels.

Transfusion-transmitted HIV infection, although rare, likely is underrecognized, and every case warrants a detailed investigation. Three previous cases of HIV infection attributable to transfusion of infected blood products that tested negative by HIV NAT and EIA because of donation during the eclipse period were identified and reported to CDC in 2000 (9) and 2002 (10). Assuming that 16 million donations occur each year** and using the most conservative estimated risk

* A suspected case of transfusion-transmitted HIV infection in the United States in 2006 has been identified by a blood center through donor screening, but not reported to national surveillance.

† Additional information available at <http://www.fda.gov/biologicsbloodvaccines/guidancecomplianceinformation/guidances/blood/ucm073445.htm>.

§ Additional information available at <http://www.fda.gov/downloads/biologicsbloodvaccines/bloodbloodproducts/approvedproducts/licensedproductsblas/blooddonorscreening/infectiousdisease/ucm092036.pdf>.

¶ Additional information available at <http://www.fda.gov/downloads/biologicsblood%20vaccines/guidancecomplianceinformation/guidances/blood/ucm210270.pdf>.

** Additional information available at http://www.hhs.gov/ophs/bloodsafety/2007nbcus_survey.pdf.

What is already known on this topic?

Transfusion-transmitted cases of HIV infection are rare, but still might occur despite screening questionnaires for deferral of at-risk donations and improvements in laboratory testing for detecting HIV in blood products.

What is added by this report?

This report describes the first case of transfusion-transmitted HIV infection reported to CDC since 2002.

What are the implications for public health practice?

Although transfusion-transmitted HIV infection is a rare event, clinicians and health departments should evaluate the possibility of such an event in a patient with no other known risk factors for HIV infection. If a case of transfusion-transmitted HIV infection is identified, clinicians should report the case through their public health surveillance system and collaborate with blood collection centers and health departments to conduct an investigation.

for HIV infection of one in 1.5 million donations (2), approximately 11 infectious donations and 20 HIV-positive blood components released each year could potentially infect recipients. In this case, eligibility screening questions,^{††} if answered accurately, would have excluded the donor because of his sexual history. It is the responsibility of persons who donate blood to answer screening questionnaires accurately to ensure the safest blood supply possible.

Blood collection centers conduct investigations of previous donations when a positive antibody or NAT result is identified in a repeat donor. However, fewer than the expected number of cases of transfusion-transmitted HIV infection were reported to CDC from 2002 to 2008, a 6-year period when an estimated 16 million units of blood or blood components were donated annually. Because the number of reported cases is lower than expected, risk estimates might have been too high. Alternatively, transfusion-transmitted HIV infections might have gone unreported either because of 1) recipient death attributed to the underlying condition or some other cause before detection of HIV infection from the receipt of infected blood or blood components, 2) poor recall by infected persons regarding receipt of blood or blood components

before their HIV diagnosis, 3) inability to confirm or rule out transfusion as the source of infection because no HIV-infected donors were identified, 4) underrecognition of HIV infections among recipients of potentially infected blood or blood components who recover and might never have been subsequently tested for HIV infection, or 5) misclassification of a transfusion-transmitted HIV infection in a person who also had other risk factors more frequently associated with HIV transmission (e.g., male-to-male sexual contact or injection drug use) to which that infection was attributed. Adoption of CDC's 2006 recommendation for routine opt-out HIV testing recommendations, whereby all persons are tested for HIV as part of routine health care unless they decline, might reduce the possibility of unrecognized transfusion-transmitted infections and possibly reduce donations by HIV-infected persons being made aware of their status.^{§§} Additionally, blood centers might consider the logistics, costs, and potential benefits of saving specimens of blood so that retrospective testing can be conducted if transfusion-transmitted HIV infection is suspected.

Although the risk for transfusion-transmitted HIV infection is extremely low in the United States, transfusion should be considered along with other possible sources of HIV infection in a patient who has no other HIV risk factors. These investigations are most effective if conducted as soon as they are recognized and in collaboration with the blood center, transfusing health-care facilities, and state and local health departments. The National Healthcare Safety Network (NHSN) is a voluntary, secure, Internet-based surveillance system designed to collect data from a sample of U.S. health-care facilities to permit valid estimation of the magnitude of adverse events among patients. The Hemovigilance Module added this year to the NHSN's Biovigilance Component^{¶¶} was designed specifically to bolster the collaborative capacity of public health and private industry to detect adverse events (e.g., HIV infections) associated with transfusion. Findings from Hemovigilance Module surveillance data will be used to improve the safety of the blood supply in the United States.

^{††} Additional information available at <http://www.fda.gov/biologicsbloodvaccines/bloodbloodproducts/approvedproducts/licensedproductsblas/blooddonorscreening/ucm164185.htm>.

^{§§} Additional information available at <http://www.cdc.gov/mmwr/preview/mmwrhtml/rr55/14a1.htm>.

^{¶¶} Additional information available at <http://www.cdc.gov/nhsn/bio.html>.

References

1. CDC. Possible transfusion-associated acquired immune deficiency syndrome (AIDS)—California. *MMWR* 1982;31:652–4.
2. Zou S, Dorsey KA, Notari EP, et al. Prevalence, incidence, and residual risk of human immunodeficiency virus and hepatitis C virus infections among United States blood donors since the introduction of nucleic acid testing. *Transfusion* 2010;50:1495–504.
3. Stramer SL. Third reported US case of breakthrough HIV transmission from NAT screened blood. *Transmission* 2003;43(Supplement):40A.
4. Busch MP, Dodd RY. NAT and blood safety: what is the paradigm? *Transfusion* 2000;40:1157–60.
5. Stramer SL, Caglioti S, Strong DM. NAT of the United States and Canadian blood supply. *Transfusion* 2000;40:1165–8.
6. Keele BF, Giorgi EE, Salazar-Gonzalez JF, et al. Identification and characterization of transmitted and early founder virus envelopes in primary HIV-1 infection. *Proc Natl Acad Sci U S A* 2008;105:7552–7.
7. Jackson BR, Busch MP, Stramer SL, AuBuchon JP. The cost-effectiveness of NAT for HIV, HCV, and HBV in whole-blood donations. *Transfusion* 2003;43:721–9.
8. Dodd RY, Notari EP, Stramer SL. Current prevalence and incidence of infectious disease markers and estimated window-period risk in the American Red Cross blood donor population. *Transfusion* 2002;42:975–9.
9. Delwart EL, Kalmin ND, Jones TS, et al. First report of human immunodeficiency virus transmission via an RNA-screened blood donation. *Vox Sang* 2004;86:171–7.
10. Phelps R, Robbins K, Liberti T, et al. Window-period human immunodeficiency virus transmission to two recipients by an adolescent blood donor. *Transfusion* 2004;44:929–33.

State Medicaid Coverage for Tobacco-Dependence Treatments — United States, 2009

Medicaid enrollees have nearly twice the smoking rates (37%) of the general adult population (21%), and smoking-related medical costs are responsible for 11% of Medicaid expenditures (1,2). In 2008, the Public Health Service released clinical practice guidelines recommending comprehensive coverage of effective tobacco-dependence medications and counseling by health insurers (3). *Healthy People 2010* established a clear objective for Medicaid programs to cover all Food and Drug Administration–approved medications and counseling for tobacco cessation (4). To monitor progress toward that objective, the Center for Health and Public Policy Studies at the University of California, Berkeley, in collaboration with CDC, surveyed Medicaid programs in the 50 states and the District of Columbia (DC) to document their 2009 tobacco-dependence treatment coverage and found that 47 programs offered coverage. Only eight state programs offered coverage of all recommended pharmacotherapy and counseling for all Medicaid enrollees, and 16 programs reported coverage for fee-for-service enrollees that differed from that provided for Medicaid managed-care enrollees. Among the 33 programs that covered at least one combination therapy, the nicotine patch plus bupropion slow release (SR) was the one combination covered by all. The Affordable Care Act mandates Medicaid coverage of tobacco-dependence treatments (5) for pregnant women, beginning October 1, 2010. Coverage of pharmacotherapy for all Medicaid enrollees will be enhanced by January 2014, when states no longer may exclude tobacco-dependence cessation drugs from covered benefits. Monitoring the extent to which Medicaid programs place limitations on these treatments can help in evaluating accessibility of tobacco-dependence treatments to Medicaid enrollees.

Medicaid coverage of tobacco-dependence treatments has been assessed regularly since 1998 by the University of California, Berkeley. In November 2009, a link to an online survey instrument was sent to previously identified Medicaid personnel for the 50 state Medicaid programs and DC. Respondents were asked to complete 45 questions regarding treatment coverage, coverage limitations, outreach activities, and related subjects. Follow-up questions were

directed to relevant contacts in each state via telephone or e-mail. The response rate was 100%. To validate survey responses, Medicaid programs were asked to submit documentation of their tobacco-dependence treatment coverage policies. Of the 47 programs that indicated they covered at least one tobacco-dependence treatment, supporting documentation was obtained for 44 (94%) programs. For programs without complete documentation, the information given by the respondent was confirmed with a second respondent within that state before being accepted as accurate.

Among the 51 Medicaid programs, 47 provided tobacco-dependence treatment coverage for some enrollees, 38 covered at least one tobacco-dependence treatment for all Medicaid enrollees, and four (Connecticut, Georgia, Missouri, and Tennessee) offered no coverage for tobacco-dependence treatment to their enrollees. Coverage for all enrollees was defined as coverage that did not differ between fee-for-service (FFS) and managed-care organization (MCO) enrollees. Coverage for all Medicaid enrollees was reported for the nicotine patch (34 programs), bupropion or Zyban* (33 programs), nicotine gum (32 programs), varenicline (Chantix) (32 programs), nicotine nasal spray (28 programs), nicotine inhalers (27 programs), and nicotine lozenges (25 programs). Only five states (Indiana, Massachusetts, Minnesota, Montana, and Pennsylvania) reported having policies that require coverage of all recommended pharmacotherapies and individual and group counseling for all Medicaid enrollees.

The 2008 Public Health Service guideline identifies four combination therapies (i.e., two tobacco-dependence medications taken simultaneously) as being effective in treating tobacco-dependence: 1) nicotine patch and nicotine gum, 2) nicotine patch and nicotine nasal spray, 3) nicotine patch and nicotine inhaler, and 4) nicotine patch and bupropion SR (3). The most commonly covered combination of tobacco-dependence treatments among the Medicaid

*Zyban is a trade name for bupropion. Coverage was assessed separately for Zyban and bupropion because some programs cover one but not the other. Data presented represent coverage for either bupropion or Zyban.

programs was the nicotine patch and bupropion SR (33 programs), followed by the nicotine patch and nicotine gum (21 programs), the nicotine patch and nicotine inhaler (21 programs), and the nicotine patch and nicotine nasal spray (19 programs).

Fewer Medicaid programs covered counseling than pharmacotherapy; 18 programs covered individual counseling for all Medicaid enrollees, six programs covered only FFS enrollees (with two restricting coverage to pregnant women), one covered MCO enrollees only, and six covered only pregnant women. Eight Medicaid programs covered group counseling for all Medicaid enrollees, three programs covered group counseling for FFS only (with two restricting coverage to pregnant women), two programs covered only MCO enrollees, and five programs covered group counseling for pregnant women only.[†]

Nationwide, coverage for any tobacco-dependence treatments increased, from 45 programs (including two with coverage only for pregnant women) to 47 programs since 2007, the most recent year for which comparable data were reported (6). Nebraska added coverage for tobacco-dependence treatments for FFS enrollees and Alabama added individual counseling for pregnant women (Table). In addition, Arizona and Washington expanded coverage previously limited to pregnant women to include all Medicaid enrollees. Overall, 12 Medicaid programs added or expanded coverage from 2007 to 2009.

Medicaid enrollment options vary considerably across and within states. Some states offer only traditional FFS Medicaid, others enter into contracts with MCOs to provide services to Medicaid enrollees. Because some state programs reported different coverage policies for FFS and MCO enrollees, and for pregnant women, Medicaid recipients within a state might have varying degrees of access to tobacco-dependence treatments. Some states required that all MCO contracts provide an agreed upon level of coverage for tobacco-dependence treatments; other states allow MCOs to determine what coverage they offer. For example, 32 Medicaid programs covered nicotine gum to all enrollees, but nine programs offered coverage for nicotine gum to their FFS population without requirements to provide this coverage in their MCO contracts (Table). In addition, Rhode Island

[†] Two programs covered counseling for pregnant women in FFS only. These two are included under the totals for pregnancy only and for FFS only (Table).

What is already known on this topic?

Prevalence of smoking is nearly twice as high among Medicaid enrollees than in the general U.S. population, and *Healthy People 2010* calls for expanding coverage for tobacco-dependence treatment to Medicaid programs in all 50 states and the District of Columbia.

What is added by this report?

Although 47 (92%) of 51 Medicaid programs offered coverage for some form of tobacco-dependence treatment to Medicaid enrollees, only five states offer coverage of all recommended pharmacotherapies and individual and group counseling for all Medicaid enrollees, and 16 states have coverage policies that are not consistent for fee-for-service and managed-care organization enrollees.

What are the implications for public health practice?

To increase the effectiveness of recommended tobacco-dependence treatments, Medicaid programs should inform their enrollees and providers about coverage changes, offer tobacco-dependence treatments without barriers or limitations, measure treatment usage rates, and assess any remaining barriers to coverage.

required coverage for nicotine gum in contracts with MCOs, but does not cover this treatment for FFS enrollees. Overall, 16 programs reported coverage for FFS enrollees that differed from that provided for MCO enrollees.

Reported by

SB McMenamin, PhD, HA Halpin, PhD, M Ingram, Center for Health and Public Policy Studies, Univ of California, Berkeley. A Rosenthal, Office on Smoking and Health, National Center for Chronic Disease Prevention and Health Promotion, CDC.

Editorial Note

This report updates previously published information on coverage for tobacco-dependence treatments in Medicaid programs (6) and, for the first time, lists coverage for FFS, MCO, or all enrollees for each tobacco-dependence treatment in each Medicaid program and provides data on combination therapies. Coverage increased in 12 states since 2007, and in 16 states, coverage for FFS enrollees differed from coverage for MCO enrollees.

Public health initiatives and clinical guidelines to reduce tobacco use have called for comprehensive coverage of recommended treatments (3,4). Most state Medicaid programs fall short of this goal. Coverage

TABLE. State Medicaid program coverage for tobacco-dependence treatments,* by type of coverage and year coverage began — United States, 2009†

| State/Area | Year coverage began | Medication coverage | | | | | | | Counseling coverage | |
|------------------------------------|---------------------|----------------------|----------------------|------------------|------------------|----------------------|-----------------------|---|----------------------|----------------------|
| | | Gum | Patch | Nasal spray | Inhaler | Lozenge | Varenicline (Chantix) | Bupropion hydrochloride or Zyban [§] | Group | Individual |
| Alabama | 2008 | No | No | No | No | No | No | No | No | Yes (P) [¶] |
| Alaska | 2006 | Yes | Yes | Yes | No | Yes | Yes | Yes | No | Yes |
| Arizona | 2008 | Yes [¶] | Yes [¶] | Yes [¶] | Yes [¶] | Yes [¶] | Yes [¶] | Yes [¶] | No | Yes (P) |
| Arkansas | 1999 | Yes | Yes | No | No | No | Yes | Yes | No | Yes |
| California | 1996 | Yes | Yes | Yes | Yes | Yes | Yes | Yes | No | No |
| Colorado | 1996 | Yes (F) | Yes (F) | Yes (F) | Yes (F) | Yes (F) | Yes (F) | Yes (F) | Yes (P) | Yes (P) |
| Delaware | 1996 | Yes | Yes | Yes | Yes | Yes | Yes | Yes | No | No |
| District of Columbia | 1996 | Yes | Yes | Yes | Yes | Yes | Yes | Yes | No | No |
| Florida** | 1998 | Yes (F) | Yes (F) | No | No | Yes (F) [¶] | Yes (F) | Yes | Yes (M) | Yes (M) |
| Hawaii†† | 1999 | Yes | Yes | Yes | Yes | Yes | Yes | Yes | No | No |
| Idaho ^{§§} | 2007 | Yes | Yes | Yes | Yes | Yes | Yes | Yes | No | No |
| Illinois | 2000 | Yes | Yes | Yes | Yes | Yes | Yes | Yes | No | No |
| Indiana | 1999 | Yes | Yes | Yes | Yes | Yes | Yes | Yes | Yes | Yes |
| Iowa | 2007 | Yes | Yes | No | No | No | Yes [¶] | Yes | No | Yes (F) [¶] |
| Kansas | 1999 | No | Yes (F) | No | No | No | Yes (F) | Yes (F) | No | No |
| Kentucky | 2000 | No | No | No | No | No | No | No | Yes (P)(F) | Yes (P)(F) |
| Louisiana | 1990 | Yes | Yes | Yes | Yes | No | Yes | Yes | No | No |
| Maine | 1996 | Yes | Yes | Yes | Yes | Yes | Yes | No ^{¶¶} | No | Yes |
| Maryland | 1996 | No | Yes | Yes | Yes | No | Yes | Yes | No | Yes |
| Massachusetts | 2006 | Yes | Yes | Yes | Yes | Yes | Yes | Yes | Yes | Yes |
| Michigan** | 1997 | Yes (F) | Yes | No | No | Yes (F) | Yes (F) | Yes (F) | No | Yes |
| Minnesota | 1996 | Yes | Yes | Yes | Yes | Yes | Yes | Yes | Yes | Yes |
| Mississippi | 2001 | Yes | Yes | Yes | Yes | Yes | Yes | Yes | Yes (P) | Yes (P) |
| Montana | 1996 | Yes | Yes | Yes | Yes | Yes | Yes | Yes | Yes [¶] | Yes [¶] |
| Nebraska | 2008 | Yes (F) [¶] | Yes (F) [¶] | No | No | No | Yes (F) [¶] | Yes (F) [¶] | No | Yes (F) [¶] |
| Nevada | 1996 | Yes (F) | Yes (F) | Yes (F) | Yes (F) | Yes (F) | Yes (F) | Yes (F) | No | No |
| New Hampshire | 1996 | Yes | Yes | Yes | Yes | Yes | Yes | Yes | Yes (P) | Yes*** |
| New Jersey | 1996 | Yes (F) | Yes (F) | Yes (F) | Yes (F) | Yes (F) | Yes (F) | Yes (F) | No | No |
| New Mexico | 1996 | Yes (F) | Yes (F) | Yes (F) | Yes (F) | Yes (F) | Yes (F) | Yes (F) | Yes††† | Yes (F)††† |
| New York | 1999 | Yes | Yes | Yes | Yes | No | Yes | Yes | Yes (P) [¶] | No |
| North Carolina | 1996 | Yes | Yes | Yes | Yes | Yes | Yes | Yes | No | Yes [¶] |
| North Dakota | 1996 | Yes | Yes | No | No | Yes [¶] | Yes [¶] | Yes | Yes | Yes |
| Ohio | 1998 | Yes | Yes | Yes | Yes | Yes | Yes | Yes | No | No |
| Oklahoma | 1999 | Yes | Yes | Yes | Yes | Yes | Yes | Yes | No | Yes |
| Oregon ^{§§§} | 1998 | Yes (F) | Yes (F) | Yes (F) | Yes (F) | Yes (F) | Yes (F) | Yes (F) | Yes (F) | Yes (F) |
| Pennsylvania | 2002 | Yes | Yes | Yes | Yes | Yes | Yes | Yes | Yes | Yes |
| Rhode Island | 1994 | Yes (M) | Yes (M) | Yes (M) | Yes (M) | Yes (M) | No | No | Yes | Yes |
| South Carolina | 2004 | Yes | Yes | Yes | Yes | Yes | Yes | Yes | No | No |
| South Dakota | 2001 | No | No | No | No | No | Yes | Yes | No | No |
| Texas | 1996 | Yes | Yes | Yes | Yes | No | Yes | Yes | No | No |
| Utah | 2001 | Yes | Yes | Yes | Yes | Yes | Yes | Yes | Yes (P)(F) | Yes (P)(F) |
| Vermont | 1999 | Yes | Yes | Yes | Yes | Yes | Yes | Yes | No | No |
| Virginia | 1996 | Yes (F) | Yes (F) | Yes (F) | Yes (F) | Yes (F) | Yes (F) | Yes (F) | Yes (P) | Yes (P) [¶] |
| Washington | 2008 | Yes [¶] | Yes [¶] | No | No | No | Yes (F) [¶] | Yes (P) | No | Yes (P) |
| West Virginia | 2000 | Yes | Yes | Yes | Yes | Yes | No | Yes | Yes (M) | Yes |
| Wisconsin | 1996 | Yes [¶] | Yes | Yes | Yes | No | Yes | Yes | No | Yes |
| Wyoming | 2007 | Yes | Yes | No | No | Yes | Yes | Yes | No*** | Yes |
| Total states/areas | | 32 | 34 | 28 | 27 | 25 | 32 | 33 | 8 | 18 |
| Fee-for-service only (F) | | 9 | 9 | 6 | 6 | 8 | 11 | 9 | 3 | 6 |
| Managed-care organization only (M) | | 1 | 1 | 1 | 1 | 1 | 0 | 0 | 2 | 1 |
| Pregnancy only (P) | | 0 | 0 | 0 | 0 | 0 | 0 | 1 | 7 | 8 |
| Added since 2007 | | 4 | 3 | 1 | 1 | 3 | 5 | 2 | 2 | 6 |

Abbreviations: F = coverage in Medicaid fee-for-service only; M = coverage in Medicaid managed-care organization only; P = Medicaid coverage exclusively for pregnant women.

* Based on response to the question "Does your state Medicaid program cover any of the following tobacco-dependence treatments?" Each state also was asked to provide documentation of coverage.

† N = 47. In 2009, three states with Medicaid programs (Connecticut, Missouri, and Tennessee) covered none of the tobacco-dependence treatments recommended in the 2008 Public Health Service *Clinical Practice Guideline*. Georgia covers bupropion without prior authorization; therefore, it could be used for smoking cessation, although this was not the intention of the coverage policy.

§ Covered either bupropion or Zyban specifically for smoking cessation.

¶ Treatment added since 2007 survey.

** Some of these treatments are required per managed-care organization contracts although plans have a choice of which treatments to cover.

†† Hawaii previously covered tobacco-dependence treatments only after the gum or patch was used in conjunction with quitline support for 2 weeks. This policy was revised in June 2009 and is no longer contingent on quitline enrollment.

§§ Idaho provides an allowance of \$200 per enrollee per year for personal health benefits that can be applied to smoking cessation benefits.

¶¶ Maine covers bupropion, but not specifically for smoking cessation.

*** Response differs from the previous survey because of a reporting error. In most cases, this resulted from the state reporting on managed-care organization coverage policies and not Medicaid fee-for-service.

††† Fee-for-service covers when there is a valid behavioral health diagnosis other than tobacco dependence.

§§§ Oregon requires that managed-care organizations cover "behavioral and tobacco cessation therapy products" but does not specify coverage of specific tobacco-dependence treatments; however, most managed-care organizations cover the same treatments covered under fee-for-service Medicaid.

varies considerably for specific tobacco-dependence treatments within states and across states. Tobacco-dependence treatments are one of the few clinical preventive services shown to reduce costs (7). Insurers that provide adequate access and support for persons seeking to quit smoking can improve cessation rates substantially, with potential for considerable improvement in public health and reduction in medical expenditures (7,8). In Massachusetts, for example, a mandate for Medicaid coverage of tobacco-dependence cessation treatments was associated with a 26% decline in smoking rates among Medicaid enrollees (9).

The findings in this report are subject to at least three limitations. First, Medicaid staff members self-report information on their Medicaid programs. Documentation to verify coverage policies was obtained for 94% of programs; where documentation was not available, errors might have occurred. Second, MCO contracts were not available from all programs. If the state informant did not possess a written contract or policy specifying that tobacco-dependence treatments were covered, the response given by the respondent was assumed to be accurate. Finally, many MCOs offer coverage for tobacco-dependence treatments to Medicaid enrollees, although it is not required per contracts with Medicaid. Consequently, reported data might underestimate tobacco-dependence treatment coverage among MCO enrollees.

Recent federal policy is increasing access to smoking cessation treatments. Section 4107 of the Affordable Care Act has required Medicaid programs to cover tobacco-dependence treatments for pregnant women, with no cost-sharing since October 1, 2010 (5). Section 4106 of the act permits Medicaid programs to cover the A and B level recommendations of the U.S. Preventive Services Task Force, including cessation counseling and all Food and Drug Administration–approved tobacco-dependence treatments. States that offer such benefits and adult vaccination benefits, and prohibit cost sharing on these benefits, will receive a one full percentage point increase in the Medicaid federal medical assistance percentage for expenditures on these services, effective January 1, 2013 (3,5). Currently, only eight Medicaid programs cover all medications and at least one form of counseling for their entire population; the remaining 43 Medicaid programs would need to add coverage for additional tobacco-dependence treatments if

they seek to comply with the U.S. Preventive Services Task Force recommendations. Previous research indicates that knowledge of Medicaid coverage for tobacco-dependence treatments among Medicaid-enrolled smokers is very low (10). To increase the impact of the federal legislation, it is important that Medicaid programs inform their enrollees and providers about changes in coverage for tobacco-dependence treatments and offer these treatments without barriers or limitations. In addition, future monitoring of Medicaid programs should include measurement of usage rates of tobacco-dependence treatments and assessment of any existing barriers to coverage.

References

1. Pleis JR, Lucas JW, Ward BW. Summary health statistics for U.S. adults: National Health Interview Survey, 2008. *Vital Health Stat* 2009;10(242):1–157.
2. Armour BS, Finkelstein EA, Fiebelkorn IC. State-level Medicaid expenditures attributable to smoking. *Prev Chronic Dis* 2009;6:A84.
3. Fiore MC, Jaen CR, Baker TB, et al. Treating tobacco use and dependence: 2008 update. Clinical practice guideline. Rockville, MD: US Department of Health and Human Services, Public Health Service; 2008. Available at http://www.surgeongeneral.gov/tobacco/treating_tobacco_use08.pdf. Accessed April 2, 2010.
4. US Department of Health and Human Services. Objective 27-8b: increase insurance coverage of evidence-based treatment for nicotine dependency. In: *Healthy people 2010* (conference ed, in 2 vols). Washington, DC: US Department of Health and Human Services; 2000. Available at <http://www.healthypeople.gov/document/html/objectives/27-08.htm>. Accessed April 2, 2010.
5. Patient Protection and Affordable Care Act of 2010. Pub. L. No. 114–48 (March 23, 2010), as amended through May 1, 2010. Available at <http://docs.house.gov/energycommerce/ppacacon.pdf>. Accessed October 20, 2010.
6. CDC. State Medicaid coverage for tobacco-dependence treatments—United States, 2007. *MMWR* 2009;58:1199–204.
7. Maciosek MV, Coffield AB, Edwards NM, Flottemesch TJ, Goodman MJ, Solberg LI. Priorities among effective clinical preventive services: results of a systematic review and analysis. *Am J Prev Med* 2006;31:52–61.
8. Reda AA, Kaper J, Fikrelter H, Severens JL, van Schayck CP. Healthcare financing systems for increasing the use of tobacco dependence treatment. *The Cochrane Library* 2009;3:CD004305. Available at <http://onlinelibrary.wiley.com/o/cochrane/clsysrev/articles/CD004305/frame.html>. Accessed October 15, 2010.
9. Land T, Warner D, Paskowsky M, et al. Medicaid coverage for tobacco dependence treatments in Massachusetts and associated decreases in smoking prevalence. *PLoS ONE* 2010;5:e9770. Available at <http://www.plosone.org/article/info%3Adoi%2F10.1371%2Fjournal.pone.0009770>. Accessed April 20, 2010.
10. McMnaman SB, Halpin HA, Bellows NM. Knowledge of Medicaid coverage and effectiveness of smoking treatments. *Am J Prev Med* 2006;31:369–74.

Announcements

World Stroke Day — October 29, 2010

October 29 is World Stroke Day 2010. Stroke is the third leading cause of death in the United States (1). Approximately 795,000 strokes occur annually in the United States, with an estimated cost of more than \$73 billion (1). The theme for this year's World Stroke Day is "One in Six," to raise awareness that one in six persons worldwide will have a stroke in their lifetime, and that every 6 seconds, someone somewhere will die from a stroke (2,3).

This campaign stresses that the occurrence of stroke is common and widespread, but that stroke can be prevented and stroke survivors can recover and regain their quality of life with care and support. The campaign recommends the following six actions to reduce the likelihood of having a stroke:

- Know your personal risk factors, including diagnosed high blood pressure, diabetes, or high cholesterol.
- Be physically active and exercise regularly.
- Avoid obesity by eating a healthy diet with lots of fresh fruits and vegetables.
- Limit alcohol consumption.
- Avoid cigarette smoke. People who smoke should seek help to stop now.
- Learn to recognize the warning signs of a stroke and call 9-1-1 right away if someone is suspected of having a stroke.

CDC addresses stroke prevention through state-based programs to prevent heart disease and stroke, through the Paul Coverdell National Acute Stroke Registry, and through many other partnerships. Information about stroke and stroke prevention is available at <http://www.cdc.gov/stroke>, and additional information about World Stroke Day 2010 is available at <http://www.worldstrokecampaign.org/pages/home.aspx>.

References

1. Lloyd-Jones D, Adams R, Brown TM, et al. Heart disease and stroke statistics 2010 update. A report from the American Heart Association Statistics Committee and Stroke Statistics Subcommittee. *Circulation* 2010;121:e46–215.
2. Seshadri S, Beiser A, Kelly-Hayes M, et al. The lifetime risk of stroke: estimates from the Framingham Study. *Stroke* 2006;37:345–50.
3. World Health Organization. The atlas of heart disease and stroke. Geneva, Switzerland: World Health Organization; 2004.

Menu of Suggested Provisions for State Tuberculosis Prevention and Control Laws Available Online

Tuberculosis (TB) laws provide authority for state and local TB programs to prevent and control TB, an airborne infectious disease that sickens approximately 11,000–12,000 persons each year in the United States (1). CDC, in collaboration with the National Tuberculosis Controllers Association, has developed a Menu of Suggested Provisions for State Tuberculosis Prevention and Control Laws. A request by the Advisory Council for the Elimination of Tuberculosis for a model TB prevention and control act prompted development of the menu.

The menu features a set of alternative provisions within each section for consideration by public health officials and their legal counsel in the enactment, promulgation, amendment, or implementation of laws to prevent and control TB. The menu is intended to serve as a practical resource for public health officials and their legal counsel in their efforts to eliminate TB. This document is available at <http://www.cdc.gov/tb/programs/laws/menu/default.htm> and <http://www2.cdc.gov/phlp/tbcontrol.asp>.

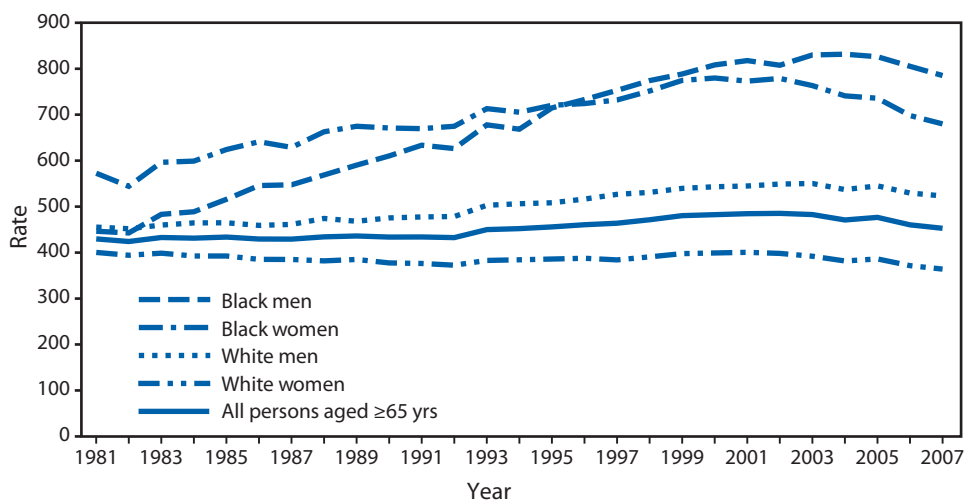
Reference

1. CDC. Decrease in reported tuberculosis cases—United States, 2009. *MMWR* 2010;59:289–94.

QuickStats

FROM THE NATIONAL CENTER FOR HEALTH STATISTICS

Death Rates* For Persons Aged ≥ 65 Years, with Diabetes as the Underlying or a Contributing Cause, by Race and Sex — United States, 1981–2007



* Rates are age-adjusted per 100,000 U.S. standard population aged ≥ 65 years. Cause of death is based on *International Classification of Diseases, Ninth Revision* (ICD-9) code 250 (Diabetes mellitus) for 1981–1998 and *International Classification of Diseases, 10th Revision* (ICD-10) codes E10–E14 (Diabetes mellitus) for 1999–2007.

Diabetes is a leading cause of death in the United States and a contributing cause of deaths from many other conditions. In 2007, diabetes was a contributing cause of death 2.4 times as often as it was the underlying cause of death for persons aged ≥ 65 years. Age-adjusted death rates for deaths with diabetes declined for white and black persons aged ≥ 65 years from 2005 to 2007, after generally increasing from 1981 to 2002. In 2007, the rate was higher for black men and women than for white men and women.

Sources: CDC. National Vital Statistics System. Available at <http://www.cdc.gov/nchs/nvss.htm>.

CDC. Health Data Interactive. Available at <http://www.cdc.gov/nchs/hdi.htm>.

Notifiable Diseases and Mortality Tables

TABLE I. Provisional cases of infrequently reported notifiable diseases (<1,000 cases reported during the preceding year) — United States, week ending October 16, 2010 (41st week)*

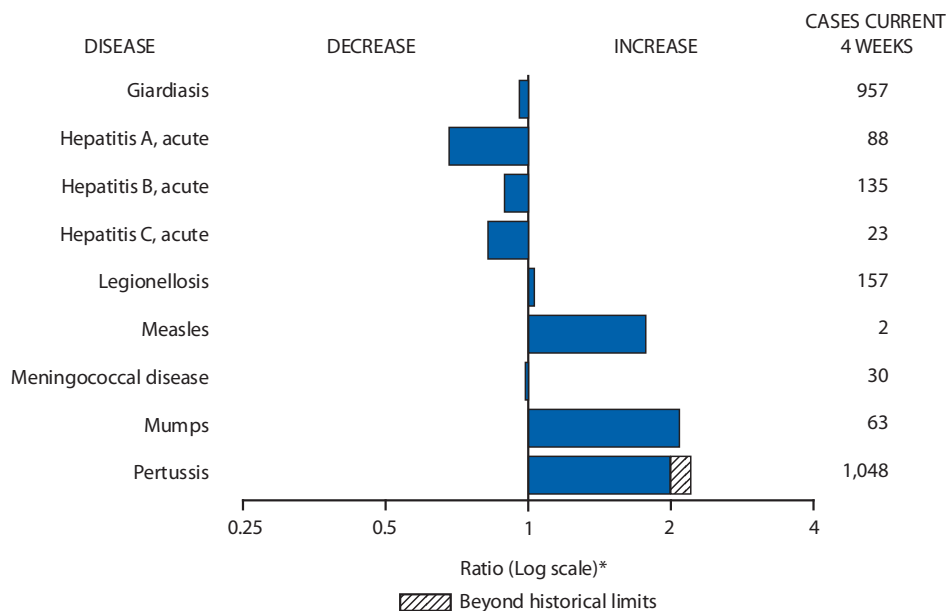
| Disease | Current week | Cum 2010 | 5-year weekly average [†] | Total cases reported for previous years | | | | | States reporting cases during current week (No.) |
|--|--------------|----------|------------------------------------|---|------|------|-------|------|--|
| | | | | 2009 | 2008 | 2007 | 2006 | 2005 | |
| Anthrax | — | — | — | 1 | — | 1 | 1 | — | |
| Botulism, total | 1 | 82 | 3 | 118 | 145 | 144 | 165 | 135 | |
| foodborne | — | 6 | 0 | 10 | 17 | 32 | 20 | 19 | |
| infant | — | 57 | 2 | 83 | 109 | 85 | 97 | 85 | |
| other (wound and unspecified) | 1 | 19 | 0 | 25 | 19 | 27 | 48 | 31 | OH (1) |
| Brucellosis | — | 97 | 2 | 115 | 80 | 131 | 121 | 120 | |
| Chancroid | — | 31 | 0 | 28 | 25 | 23 | 33 | 17 | |
| Cholera | — | 5 | 0 | 10 | 5 | 7 | 9 | 8 | |
| Cyclosporiasis [§] | 1 | 145 | 1 | 141 | 139 | 93 | 137 | 543 | FL (1) |
| Diphtheria | — | — | — | — | — | — | — | — | |
| Domestic arboviral diseases ^{§,¶} : | | | | | | | | | |
| California serogroup virus disease | — | 53 | 1 | 55 | 62 | 55 | 67 | 80 | |
| Eastern equine encephalitis virus disease | — | 10 | 0 | 4 | 4 | 4 | 8 | 21 | |
| Powassan virus disease | — | 5 | — | 6 | 2 | 7 | 1 | 1 | |
| St. Louis encephalitis virus disease | — | 6 | 0 | 12 | 13 | 9 | 10 | 13 | |
| Western equine encephalitis virus disease | — | — | — | — | — | — | — | — | |
| <i>Haemophilus influenzae</i> , ** invasive disease (age <5 yrs): | | | | | | | | | |
| serotype b | — | 13 | 1 | 35 | 30 | 22 | 29 | 9 | |
| nonsertotype b | 1 | 133 | 2 | 236 | 244 | 199 | 175 | 135 | OH (1) |
| unknown serotype | 2 | 181 | 2 | 178 | 163 | 180 | 179 | 217 | NY (1), OK (1) |
| Hansen disease [§] | 1 | 35 | 2 | 103 | 80 | 101 | 66 | 87 | CA (1) |
| Hantavirus pulmonary syndrome [§] | — | 16 | 0 | 20 | 18 | 32 | 40 | 26 | |
| Hemolytic uremic syndrome, postdiarrheal [§] | 3 | 167 | 6 | 242 | 330 | 292 | 288 | 221 | MD (1), TX (1), CA (1) |
| HIV infection, pediatric (age <13 yrs) ^{††} | — | — | 3 | — | — | — | — | 380 | |
| Influenza-associated pediatric mortality ^{§,§§} | — | 56 | 3 | 358 | 90 | 77 | 43 | 45 | |
| Listeriosis ^{¶¶} | 9 | 616 | 22 | 851 | 759 | 808 | 884 | 896 | VT (1), PA (2), OH (1), ND (1), VA (1), NC (1), FL (1), HI (1) |
| Measles ^{¶¶} | — | 55 | 0 | 71 | 140 | 43 | 55 | 66 | |
| Meningococcal disease, invasive ^{***} : | | | | | | | | | |
| A, C, Y, and W-135 | — | 188 | 5 | 301 | 330 | 325 | 318 | 297 | |
| serogroup B | — | 85 | 2 | 174 | 188 | 167 | 193 | 156 | |
| other serogroup | — | 7 | 0 | 23 | 38 | 35 | 32 | 27 | |
| unknown serogroup | 7 | 301 | 9 | 482 | 616 | 550 | 651 | 765 | NY (1), PA (1), OH (1), MI (1), KY (1), CA (2) |
| Mumps | 14 | 2,419 | 18 | 1,991 | 454 | 800 | 6,584 | 314 | NYC (5), TX (9) |
| Novel influenza A virus infections ^{†††} | — | 1 | 0 | 43,774 | 2 | 4 | NN | NN | |
| Plague | — | 2 | 0 | 8 | 3 | 7 | 17 | 8 | |
| Poliomyelitis, paralytic | — | — | 0 | 1 | — | — | — | 1 | |
| Polio virus Infection, nonparalytic [§] | — | — | — | — | — | — | NN | NN | |
| Psittacosis [§] | — | 4 | 0 | 9 | 8 | 12 | 21 | 16 | |
| Q fever, total ^{§,§§§} | 1 | 98 | 3 | 114 | 120 | 171 | 169 | 136 | |
| acute | 1 | 74 | 1 | 94 | 106 | — | — | — | CA (1) |
| chronic | — | 24 | 0 | 20 | 14 | — | — | — | |
| Rabies, human | — | 1 | 0 | 4 | 2 | 1 | 3 | 2 | |
| Rubella ^{¶¶¶} | — | 6 | 0 | 3 | 16 | 12 | 11 | 11 | |
| Rubella, congenital syndrome | — | — | — | 2 | — | — | 1 | 1 | |
| SARS-CoV ^{§,****} | — | — | — | — | — | — | — | — | |
| Smallpox [§] | — | — | — | — | — | — | — | — | |
| Streptococcal toxic-shock syndrome [§] | — | 134 | 1 | 161 | 157 | 132 | 125 | 129 | |
| Syphilis, congenital (age <1 yr) ^{††††} | — | 165 | 8 | 423 | 431 | 430 | 349 | 329 | |
| Tetanus | — | 6 | 1 | 18 | 19 | 28 | 41 | 27 | |
| Toxic-shock syndrome (staphylococcal) [§] | 1 | 58 | 2 | 74 | 71 | 92 | 101 | 90 | CA (1) |
| Trichinellosis | — | 3 | 0 | 13 | 39 | 5 | 15 | 16 | |
| Tularemia | 1 | 82 | 2 | 93 | 123 | 137 | 95 | 154 | CA (1) |
| Typhoid fever | 4 | 315 | 9 | 397 | 449 | 434 | 353 | 324 | NY (1), WA (2), CA (1) |
| Vancomycin-intermediate <i>Staphylococcus aureus</i> [§] | — | 70 | 1 | 78 | 63 | 37 | 6 | 2 | |
| Vancomycin-resistant <i>Staphylococcus aureus</i> [§] | — | 1 | 0 | 1 | — | 2 | 1 | 3 | |
| Vibriosis (noncholera <i>Vibrio</i> species infections) [§] | 9 | 634 | 11 | 789 | 588 | 549 | NN | NN | MD (1), VA (1), NC (1), TN (1), TX (2), WA (1), CA (2) |
| Viral hemorrhagic fever ^{§§§§} | — | 1 | — | NN | NN | NN | NN | NN | |
| Yellow fever | — | — | — | — | — | — | — | — | |

See Table I footnotes on next page.

TABLE I. (Continued) Provisional cases of infrequently reported notifiable diseases (<1,000 cases reported during the preceding year) — United States, week ending October 16, 2010 (41st week)*

—: No reported cases. N: Not reportable. NN: Not Nationally Notifiable Cum: Cumulative year-to-date counts.
 * Incidence data for reporting year 2010 is provisional, whereas data for 2005 through 2009 are finalized.
 † Calculated by summing the incidence counts for the current week, the 2 weeks preceding the current week, and the 2 weeks following the current week, for a total of 5 preceding years. Additional information is available at <http://www.cdc.gov/ncphi/diss/nndss/phs/files/5yearweeklyaverage.pdf>.
 ‡ Not reportable in all states. Data from states where the condition is not reportable are excluded from this table except starting in 2007 for the domestic arboviral diseases, STD data, TB data, and influenza-associated pediatric mortality, and in 2003 for SARS-CoV. Reporting exceptions are available at <http://www.cdc.gov/ncphi/diss/nndss/phs/infdis.htm>.
 § Includes both neuroinvasive and nonneuroinvasive. Updated weekly from reports to the Division of Vector-Borne Infectious Diseases, National Center for Zoonotic, Vector-Borne, and Enteric Diseases (ArboNET Surveillance). Data for West Nile virus are available in Table II.
 ** Data for *H. influenzae* (all ages, all serotypes) are available in Table II.
 †† Updated monthly from reports to the Division of HIV/AIDS Prevention, National Center for HIV/AIDS, Viral Hepatitis, STD, and TB Prevention. Implementation of HIV reporting influences the number of cases reported. Updates of pediatric HIV data have been temporarily suspended until upgrading of the national HIV/AIDS surveillance data management system is completed. Data for HIV/AIDS, when available, are displayed in Table IV, which appears quarterly.
 ††† Updated weekly from reports to the Influenza Division, National Center for Immunization and Respiratory Diseases. Since April 26, 2009, a total of 286 influenza-associated pediatric deaths associated with 2009 influenza A (H1N1) virus infection have been reported. Since August 30, 2009, a total of 281 influenza-associated pediatric deaths occurring during the 2009–10 influenza season have been reported.
 ¶¶ No measles cases were reported for the current week.
 *** Data for meningococcal disease (all serogroups) are available in Table II.
 †††† CDC discontinued reporting of individual confirmed and probable cases of 2009 pandemic influenza A (H1N1) virus infections on July 24, 2009. During 2009, four cases of human infection with novel influenza A viruses, different from the 2009 pandemic influenza A (H1N1) strain, were reported to CDC. The one case of novel influenza A virus infection reported to CDC during 2010 was identified as swine influenza A (H3N2) virus and is unrelated to 2009 pandemic influenza A (H1N1) virus. Total case counts for 2009 were provided by the Influenza Division, National Center for Immunization and Respiratory Diseases (NCIRD).
 §§§ In 2009, Q fever acute and chronic reporting categories were recognized as a result of revisions to the Q fever case definition. Prior to that time, case counts were not differentiated with respect to acute and chronic Q fever cases.
 ¶¶¶ No rubella cases were reported for the current week.
 **** Updated weekly from reports to the Division of Viral and Rickettsial Diseases, National Center for Zoonotic, Vector-Borne, and Enteric Diseases.
 ††††† Updated weekly from reports to the Division of STD Prevention, National Center for HIV/AIDS, Viral Hepatitis, STD, and TB Prevention.
 §§§§ There was one case of viral hemorrhagic fever reported during week 12. The one case report was confirmed as lassa fever. See Table II for dengue hemorrhagic fever.

FIGURE I. Selected notifiable disease reports, United States, comparison of provisional 4-week totals October 16, 2010, with historical data



* Ratio of current 4-week total to mean of 15 4-week totals (from previous, comparable, and subsequent 4-week periods for the past 5 years). The point where the hatched area begins is based on the mean and two standard deviations of these 4-week totals.

Notifiable Disease Data Team and 122 Cities Mortality Data Team
 Patsy A. Hall-Baker
 Deborah A. Adams Rosaline Dhara
 Willie J. Anderson Pearl C. Sharp
 Michael S. Wodajo Lenee Blanton

TABLE II. Provisional cases of selected notifiable diseases, United States, weeks ending October 16, 2010, and October 17, 2009 (41st week)*

| Reporting area | <i>Chlamydia trachomatis</i> infection | | | | | Cryptosporidiosis | | | | |
|----------------------|--|-------------------|--------|----------|----------|-------------------|-------------------|-----|----------|----------|
| | Current week | Previous 52 weeks | | Cum 2010 | Cum 2009 | Current week | Previous 52 weeks | | Cum 2010 | Cum 2009 |
| | | Med | Max | | | | Med | Max | | |
| United States | 11,466 | 23,234 | 26,182 | 926,824 | 991,863 | 78 | 123 | 324 | 6,198 | 6,058 |
| New England | 506 | 739 | 1,396 | 30,738 | 31,583 | 1 | 8 | 72 | 368 | 393 |
| Connecticut | — | 213 | 736 | 7,172 | 9,195 | — | 0 | 66 | 66 | 38 |
| Maine† | 20 | 50 | 75 | 1,996 | 1,898 | 1 | 1 | 7 | 68 | 44 |
| Massachusetts | 384 | 400 | 653 | 15,997 | 14,886 | — | 2 | 8 | 120 | 153 |
| New Hampshire | 50 | 41 | 115 | 1,903 | 1,714 | — | 1 | 5 | 44 | 69 |
| Rhode Island† | 22 | 65 | 120 | 2,687 | 2,939 | — | 0 | 2 | 10 | 21 |
| Vermont† | 30 | 23 | 51 | 983 | 951 | — | 1 | 9 | 60 | 68 |
| Mid. Atlantic | 1,658 | 3,292 | 4,619 | 132,724 | 124,691 | 8 | 15 | 37 | 659 | 687 |
| New Jersey | 431 | 483 | 691 | 20,113 | 19,404 | — | 0 | 1 | — | 46 |
| New York (Upstate) | 592 | 679 | 2,530 | 26,942 | 24,403 | 1 | 3 | 16 | 175 | 182 |
| New York City | 87 | 1,206 | 2,142 | 48,595 | 46,368 | — | 1 | 5 | 70 | 70 |
| Pennsylvania | 548 | 889 | 1,092 | 37,074 | 34,516 | 7 | 9 | 26 | 414 | 389 |
| E.N. Central | 849 | 3,508 | 4,127 | 135,036 | 160,149 | 13 | 29 | 116 | 1,673 | 1,432 |
| Illinois | 16 | 788 | 1,225 | 27,214 | 48,904 | — | 3 | 17 | 209 | 134 |
| Indiana | — | 332 | 786 | 15,015 | 18,510 | — | 4 | 10 | 133 | 235 |
| Michigan | 601 | 897 | 1,420 | 37,854 | 36,881 | 4 | 5 | 17 | 270 | 231 |
| Ohio | 129 | 960 | 1,078 | 38,333 | 39,055 | 6 | 7 | 24 | 391 | 315 |
| Wisconsin | 103 | 415 | 502 | 16,620 | 16,799 | 3 | 9 | 55 | 670 | 517 |
| W.N. Central | 212 | 1,334 | 1,565 | 53,335 | 56,732 | 17 | 23 | 81 | 1,139 | 925 |
| Iowa | 9 | 186 | 265 | 7,822 | 7,743 | — | 4 | 22 | 281 | 179 |
| Kansas | 15 | 186 | 235 | 7,415 | 8,634 | 1 | 2 | 9 | 117 | 87 |
| Minnesota | — | 274 | 331 | 10,695 | 11,586 | — | 0 | 18 | 98 | 271 |
| Missouri | 175 | 495 | 599 | 19,856 | 20,642 | 4 | 4 | 30 | 329 | 158 |
| Nebraska† | — | 93 | 237 | 3,776 | 4,316 | 3 | 2 | 26 | 205 | 101 |
| North Dakota | — | 34 | 89 | 1,375 | 1,422 | 9 | 0 | 18 | 28 | 11 |
| South Dakota | 13 | 61 | 77 | 2,396 | 2,389 | — | 2 | 6 | 81 | 118 |
| S. Atlantic | 3,394 | 4,484 | 5,681 | 178,943 | 200,947 | 12 | 19 | 51 | 825 | 925 |
| Delaware | 86 | 85 | 220 | 3,487 | 3,768 | — | 0 | 2 | 7 | 8 |
| District of Columbia | 95 | 93 | 177 | 3,904 | 5,524 | — | 0 | 1 | 2 | 6 |
| Florida | 653 | 1,407 | 1,694 | 59,115 | 58,894 | 4 | 7 | 23 | 307 | 370 |
| Georgia | 272 | 264 | 1,229 | 11,983 | 32,169 | 2 | 5 | 31 | 242 | 289 |
| Maryland† | 436 | 459 | 1,031 | 18,571 | 17,749 | 1 | 1 | 3 | 30 | 35 |
| North Carolina | 579 | 785 | 1,562 | 32,664 | 33,356 | 1 | 1 | 12 | 66 | 93 |
| South Carolina† | 824 | 523 | 694 | 21,663 | 21,751 | 1 | 1 | 8 | 76 | 49 |
| Virginia† | 377 | 596 | 902 | 24,594 | 24,817 | 3 | 2 | 8 | 80 | 62 |
| West Virginia | 72 | 70 | 137 | 2,962 | 2,919 | — | 0 | 3 | 15 | 13 |
| E.S. Central | 1,403 | 1,733 | 2,415 | 70,063 | 74,445 | 3 | 4 | 17 | 239 | 186 |
| Alabama† | 541 | 493 | 748 | 20,782 | 21,310 | 2 | 1 | 11 | 106 | 57 |
| Kentucky | 228 | 288 | 642 | 11,899 | 9,832 | 1 | 1 | 6 | 68 | 52 |
| Mississippi | 385 | 384 | 780 | 15,055 | 19,227 | — | 0 | 3 | 15 | 16 |
| Tennessee† | 249 | 571 | 728 | 22,327 | 24,076 | — | 1 | 5 | 50 | 61 |
| W.S. Central | 925 | 2,971 | 4,578 | 122,659 | 131,083 | 7 | 8 | 39 | 349 | 461 |
| Arkansas† | 279 | 250 | 392 | 9,381 | 11,673 | 1 | 1 | 3 | 30 | 46 |
| Louisiana | 389 | 228 | 1,076 | 10,974 | 23,075 | — | 1 | 5 | 48 | 46 |
| Oklahoma | 257 | 258 | 1,374 | 12,307 | 11,621 | 2 | 1 | 8 | 71 | 105 |
| Texas† | — | 2,176 | 3,201 | 89,997 | 84,714 | 4 | 5 | 30 | 200 | 264 |
| Mountain | 733 | 1,519 | 1,904 | 59,573 | 63,051 | 6 | 10 | 28 | 451 | 482 |
| Arizona | 332 | 499 | 713 | 20,207 | 20,865 | 3 | 0 | 3 | 31 | 29 |
| Colorado | 170 | 372 | 617 | 14,143 | 15,101 | 2 | 2 | 8 | 111 | 123 |
| Idaho† | — | 69 | 200 | 2,971 | 2,794 | 1 | 2 | 6 | 79 | 78 |
| Montana† | 12 | 60 | 76 | 2,377 | 2,413 | — | 1 | 4 | 40 | 49 |
| Nevada† | — | 171 | 337 | 7,382 | 8,185 | — | 0 | 6 | 30 | 19 |
| New Mexico† | 173 | 170 | 453 | 6,166 | 7,212 | — | 2 | 10 | 93 | 128 |
| Utah | 34 | 116 | 175 | 4,780 | 4,921 | — | 1 | 4 | 54 | 36 |
| Wyoming† | 12 | 38 | 79 | 1,547 | 1,560 | — | 0 | 2 | 13 | 20 |
| Pacific | 1,786 | 3,623 | 5,350 | 143,753 | 149,182 | 11 | 12 | 28 | 495 | 567 |
| Alaska | — | 110 | 148 | 4,608 | 4,217 | — | 0 | 1 | 3 | 6 |
| California | 1,332 | 2,766 | 4,406 | 110,661 | 114,127 | 4 | 7 | 19 | 282 | 336 |
| Hawaii | — | 113 | 158 | 4,550 | 4,874 | — | 0 | 0 | — | 1 |
| Oregon | 139 | 208 | 468 | 8,745 | 8,621 | 2 | 3 | 13 | 141 | 159 |
| Washington | 315 | 387 | 497 | 15,189 | 17,343 | 5 | 2 | 8 | 69 | 65 |
| Territories | | | | | | | | | | |
| American Samoa | — | 0 | 0 | — | — | N | 0 | 0 | N | N |
| C.N.M.I. | — | — | — | — | — | — | — | — | — | — |
| Guam | — | 5 | 31 | 232 | 302 | — | 0 | 0 | — | — |
| Puerto Rico | 92 | 93 | 265 | 4,216 | 5,986 | N | 0 | 0 | N | N |
| U.S. Virgin Islands | — | 9 | 29 | 323 | 416 | — | 0 | 0 | — | — |

C.N.M.I.: Commonwealth of Northern Mariana Islands.

U: Unavailable. —: No reported cases. N: Not reportable. NN: Not Nationally Notifiable. Cum: Cumulative year-to-date counts. Med: Median. Max: Maximum.

* Incidence data for reporting year 2010 is provisional. Data for HIV/AIDS, AIDS, and TB, when available, are displayed in Table IV, which appears quarterly.

† Contains data reported through the National Electronic Disease Surveillance System (NEDSS).

MMWR Morbidity and Mortality Weekly Report

TABLE II. (Continued) Provisional cases of selected notifiable diseases, United States, weeks ending October 16, 2010, and October 17, 2009 (41st week)*

| Reporting area | Dengue Virus Infection | | | | | | | | | |
|----------------------|------------------------|-------------------|-----|----------|----------|---------------------------|-------------------|---|----------|----------|
| | Dengue Fever† | | | | | Dengue Hemorrhagic Fever‡ | | | | |
| | Current week | Previous 52 weeks | | Cum 2010 | Cum 2009 | Current week | Previous 52 weeks | | Cum 2010 | Cum 2009 |
| | Med | Max | | | | Med | Max | | | |
| United States | — | 5 | 29 | 346 | NN | — | 0 | 1 | 4 | NN |
| New England | — | 0 | 2 | 4 | NN | — | 0 | 0 | — | NN |
| Connecticut | — | 0 | 0 | — | NN | — | 0 | 0 | — | NN |
| Maine¶ | — | 0 | 2 | 3 | NN | — | 0 | 0 | — | NN |
| Massachusetts | — | 0 | 0 | — | NN | — | 0 | 0 | — | NN |
| New Hampshire | — | 0 | 0 | — | NN | — | 0 | 0 | — | NN |
| Rhode Island¶ | — | 0 | 0 | — | NN | — | 0 | 0 | — | NN |
| Vermont¶ | — | 0 | 1 | 1 | NN | — | 0 | 0 | — | NN |
| Mid. Atlantic | — | 0 | 9 | 74 | NN | — | 0 | 0 | — | NN |
| New Jersey | — | 0 | 0 | — | NN | — | 0 | 0 | — | NN |
| New York (Upstate) | — | 0 | 0 | — | NN | — | 0 | 0 | — | NN |
| New York City | — | 0 | 7 | 62 | NN | — | 0 | 0 | — | NN |
| Pennsylvania | — | 0 | 2 | 12 | NN | — | 0 | 0 | — | NN |
| E.N. Central | — | 0 | 5 | 35 | NN | — | 0 | 1 | 1 | NN |
| Illinois | — | 0 | 0 | — | NN | — | 0 | 0 | — | NN |
| Indiana | — | 0 | 2 | 10 | NN | — | 0 | 0 | — | NN |
| Michigan | — | 0 | 2 | 8 | NN | — | 0 | 0 | — | NN |
| Ohio | — | 0 | 2 | 12 | NN | — | 0 | 0 | — | NN |
| Wisconsin | — | 0 | 2 | 5 | NN | — | 0 | 1 | 1 | NN |
| W.N. Central | — | 0 | 2 | 17 | NN | — | 0 | 0 | — | NN |
| Iowa | — | 0 | 1 | 2 | NN | — | 0 | 0 | — | NN |
| Kansas | — | 0 | 1 | 1 | NN | — | 0 | 0 | — | NN |
| Minnesota | — | 0 | 2 | 13 | NN | — | 0 | 0 | — | NN |
| Missouri | — | 0 | 0 | — | NN | — | 0 | 0 | — | NN |
| Nebraska¶ | — | 0 | 0 | — | NN | — | 0 | 0 | — | NN |
| North Dakota | — | 0 | 1 | 1 | NN | — | 0 | 0 | — | NN |
| South Dakota | — | 0 | 0 | — | NN | — | 0 | 0 | — | NN |
| S. Atlantic | — | 1 | 16 | 174 | NN | — | 0 | 1 | 2 | NN |
| Delaware | — | 0 | 0 | — | NN | — | 0 | 0 | — | NN |
| District of Columbia | — | 0 | 0 | — | NN | — | 0 | 0 | — | NN |
| Florida | — | 1 | 14 | 150 | NN | — | 0 | 1 | 2 | NN |
| Georgia | — | 0 | 2 | 9 | NN | — | 0 | 0 | — | NN |
| Maryland¶ | — | 0 | 0 | — | NN | — | 0 | 0 | — | NN |
| North Carolina | — | 0 | 1 | 4 | NN | — | 0 | 0 | — | NN |
| South Carolina¶ | — | 0 | 3 | 9 | NN | — | 0 | 0 | — | NN |
| Virginia¶ | — | 0 | 0 | — | NN | — | 0 | 0 | — | NN |
| West Virginia | — | 0 | 1 | 2 | NN | — | 0 | 0 | — | NN |
| E.S. Central | — | 0 | 1 | 4 | NN | — | 0 | 0 | — | NN |
| Alabama¶ | — | 0 | 1 | 1 | NN | — | 0 | 0 | — | NN |
| Kentucky | — | 0 | 1 | 1 | NN | — | 0 | 0 | — | NN |
| Mississippi | — | 0 | 1 | 1 | NN | — | 0 | 0 | — | NN |
| Tennessee¶ | — | 0 | 1 | 1 | NN | — | 0 | 0 | — | NN |
| W.S. Central | — | 0 | 1 | 4 | NN | — | 0 | 1 | 1 | NN |
| Arkansas¶ | — | 0 | 0 | — | NN | — | 0 | 1 | 1 | NN |
| Louisiana | — | 0 | 0 | — | NN | — | 0 | 0 | — | NN |
| Oklahoma | — | 0 | 1 | 4 | NN | — | 0 | 0 | — | NN |
| Texas¶ | — | 0 | 0 | — | NN | — | 0 | 0 | — | NN |
| Mountain | — | 0 | 2 | 13 | NN | — | 0 | 0 | — | NN |
| Arizona | — | 0 | 1 | 4 | NN | — | 0 | 0 | — | NN |
| Colorado | — | 0 | 0 | — | NN | — | 0 | 0 | — | NN |
| Idaho¶ | — | 0 | 1 | 2 | NN | — | 0 | 0 | — | NN |
| Montana¶ | — | 0 | 1 | 2 | NN | — | 0 | 0 | — | NN |
| Nevada¶ | — | 0 | 1 | 4 | NN | — | 0 | 0 | — | NN |
| New Mexico¶ | — | 0 | 1 | 1 | NN | — | 0 | 0 | — | NN |
| Utah | — | 0 | 0 | — | NN | — | 0 | 0 | — | NN |
| Wyoming¶ | — | 0 | 0 | — | NN | — | 0 | 0 | — | NN |
| Pacific | — | 0 | 5 | 21 | NN | — | 0 | 0 | — | NN |
| Alaska | — | 0 | 0 | — | NN | — | 0 | 0 | — | NN |
| California | — | 0 | 5 | 11 | NN | — | 0 | 0 | — | NN |
| Hawaii | — | 0 | 0 | — | NN | — | 0 | 0 | — | NN |
| Oregon | — | 0 | 0 | — | NN | — | 0 | 0 | — | NN |
| Washington | — | 0 | 2 | 10 | NN | — | 0 | 0 | — | NN |
| Territories | | | | | | | | | | |
| American Samoa | — | 0 | 0 | — | NN | — | 0 | 0 | — | NN |
| C.N.M.I. | — | — | — | — | NN | — | — | — | — | NN |
| Guam | — | 0 | 0 | — | NN | — | 0 | 0 | — | NN |
| Puerto Rico | — | 94 | 536 | 8,199 | NN | — | 0 | 3 | 30 | NN |
| U.S. Virgin Islands | — | 0 | 0 | — | NN | — | 0 | 0 | — | NN |

C.N.M.I.: Commonwealth of Northern Mariana Islands.

U: Unavailable. —: No reported cases. N: Not reportable. NN: Not Nationally Notifiable. Cum: Cumulative year-to-date counts. Med: Median. Max: Maximum.

* Incidence data for reporting year 2010 is provisional.

† Dengue Fever includes cases that meet criteria for Dengue Fever with hemorrhage, other clinical, and unknown case classifications.

‡ DHF includes cases that meet criteria for dengue shock syndrome (DSS), a more severe form of DHF.

¶ Contains data reported through the National Electronic Disease Surveillance System (NEDSS).

MMWR Morbidity and Mortality Weekly Report

TABLE II. (Continued) Provisional cases of selected notifiable diseases, United States, weeks ending October 16, 2010, and October 17, 2009 (41st week)*

| Reporting area | Ehrlichiosis/Anaplasmosis† | | | | | | | | | | | | | | |
|----------------------|------------------------------|-------------------|-----|----------|----------------------------------|--------------|-------------------|-----|--------------|----------|--------------|-------------------|----|----------|----------|
| | <i>Ehrlichia chaffeensis</i> | | | | <i>Anaplasma phagocytophilum</i> | | | | Undetermined | | | | | | |
| | Current week | Previous 52 weeks | | Cum 2010 | Cum 2009 | Current week | Previous 52 weeks | | Cum 2010 | Cum 2009 | Current week | Previous 52 weeks | | Cum 2010 | Cum 2009 |
| | Med | Max | | | | Med | Max | | | | Med | Max | | | |
| United States | 3 | 10 | 181 | 514 | 821 | 4 | 11 | 309 | 616 | 779 | — | 2 | 35 | 90 | 155 |
| New England | — | 0 | 3 | 3 | 43 | 3 | 2 | 8 | 64 | 227 | — | 0 | 2 | 7 | 2 |
| Connecticut | — | 0 | 0 | — | — | — | 0 | 5 | 18 | 16 | — | 0 | 2 | 5 | — |
| Maine§ | — | 0 | 1 | 2 | 3 | — | 0 | 2 | 14 | 12 | — | 0 | 0 | — | — |
| Massachusetts | — | 0 | 0 | — | 9 | — | 0 | 4 | — | 84 | — | 0 | 0 | — | — |
| New Hampshire | — | 0 | 1 | 1 | 4 | — | 0 | 3 | 11 | 16 | — | 0 | 1 | 2 | 1 |
| Rhode Island§ | — | 0 | 2 | — | 26 | 3 | 0 | 7 | 21 | 99 | — | 0 | 0 | — | 1 |
| Vermont§ | — | 0 | 0 | — | 1 | — | 0 | 0 | — | — | — | 0 | 0 | — | — |
| Mid. Atlantic | — | 1 | 15 | 41 | 161 | — | 3 | 17 | 166 | 266 | — | 0 | 2 | 4 | 44 |
| New Jersey | — | 0 | 3 | — | 91 | — | 0 | 2 | 1 | 65 | — | 0 | 0 | — | — |
| New York (Upstate) | — | 0 | 15 | 24 | 44 | — | 2 | 17 | 162 | 192 | — | 0 | 1 | 4 | 6 |
| New York City | — | 0 | 3 | 16 | 9 | — | 0 | 1 | 3 | 8 | — | 0 | 0 | — | 1 |
| Pennsylvania | — | 0 | 5 | 1 | 17 | — | 0 | 1 | — | 1 | — | 0 | 1 | — | 37 |
| E.N. Central | — | 0 | 4 | 28 | 82 | — | 2 | 36 | 306 | 258 | — | 1 | 6 | 55 | 66 |
| Illinois | — | 0 | 2 | 12 | 33 | — | 0 | 1 | 2 | 6 | — | 0 | 2 | 4 | 3 |
| Indiana | — | 0 | 0 | — | — | — | 0 | 0 | — | — | — | 0 | 3 | 28 | 36 |
| Michigan | — | 0 | 1 | 2 | 5 | — | 0 | 0 | — | — | — | 0 | 1 | 3 | — |
| Ohio | — | 0 | 3 | 6 | 12 | — | 0 | 1 | 2 | 1 | — | 0 | 0 | — | 2 |
| Wisconsin | — | 0 | 1 | 8 | 32 | — | 2 | 36 | 302 | 251 | — | 0 | 3 | 20 | 25 |
| W.N. Central | — | 1 | 13 | 114 | 146 | — | 0 | 261 | 9 | 7 | — | 0 | 30 | 11 | 16 |
| Iowa | — | 0 | 0 | — | — | — | 0 | 0 | — | — | — | 0 | 0 | — | — |
| Kansas | — | 0 | 1 | 6 | 6 | — | 0 | 0 | — | 1 | — | 0 | 0 | — | — |
| Minnesota | — | 0 | 6 | — | 1 | — | 0 | 261 | — | 3 | — | 0 | 30 | — | 3 |
| Missouri | — | 1 | 13 | 106 | 137 | — | 0 | 3 | 9 | 2 | — | 0 | 3 | 11 | 13 |
| Nebraska§ | — | 0 | 1 | 2 | 2 | — | 0 | 0 | — | 1 | — | 0 | 0 | — | — |
| North Dakota | — | 0 | 0 | — | — | — | 0 | 0 | — | — | — | 0 | 0 | — | — |
| South Dakota | — | 0 | 0 | — | — | — | 0 | 0 | — | — | — | 0 | 0 | — | — |
| S. Atlantic | 3 | 4 | 19 | 225 | 232 | — | 1 | 7 | 52 | 15 | — | 0 | 1 | 6 | 2 |
| Delaware | — | 0 | 3 | 17 | 19 | — | 0 | 1 | 4 | 2 | — | 0 | 0 | — | — |
| District of Columbia | — | 0 | 0 | — | — | — | 0 | 0 | — | — | — | 0 | 0 | — | — |
| Florida | — | 0 | 2 | 8 | 10 | — | 0 | 1 | 3 | 3 | — | 0 | 0 | — | — |
| Georgia | — | 0 | 4 | 19 | 17 | — | 0 | 1 | 1 | 1 | — | 0 | 1 | 1 | — |
| Maryland§ | 2 | 0 | 3 | 22 | 37 | — | 0 | 2 | 12 | 3 | — | 0 | 1 | 2 | — |
| North Carolina | — | 1 | 13 | 91 | 59 | — | 0 | 4 | 19 | 3 | — | 0 | 0 | — | — |
| South Carolina§ | — | 0 | 2 | 3 | 10 | — | 0 | 1 | 1 | — | — | 0 | 0 | — | — |
| Virginia§ | 1 | 1 | 13 | 65 | 79 | — | 0 | 2 | 12 | 3 | — | 0 | 1 | 3 | 2 |
| West Virginia | — | 0 | 0 | — | 1 | — | 0 | 0 | — | — | — | 0 | 1 | — | — |
| E.S. Central | — | 1 | 10 | 82 | 124 | 1 | 0 | 2 | 17 | 3 | — | 0 | 1 | 6 | 24 |
| Alabama§ | — | 0 | 3 | 10 | 6 | — | 0 | 2 | 7 | 1 | — | 0 | 0 | — | — |
| Kentucky | — | 0 | 2 | 14 | 10 | — | 0 | 0 | — | — | — | 0 | 0 | — | — |
| Mississippi | — | 0 | 1 | 3 | 6 | — | 0 | 1 | 1 | — | — | 0 | 0 | — | — |
| Tennessee§ | — | 1 | 6 | 55 | 102 | 1 | 0 | 2 | 9 | 2 | — | 0 | 1 | 6 | 24 |
| W.S. Central | — | 0 | 141 | 20 | 30 | — | 0 | 23 | 2 | 1 | — | 0 | 1 | 1 | — |
| Arkansas§ | — | 0 | 34 | 2 | 4 | — | 0 | 6 | — | — | — | 0 | 0 | — | — |
| Louisiana | — | 0 | 1 | 1 | — | — | 0 | 0 | — | — | — | 0 | 0 | — | — |
| Oklahoma | — | 0 | 105 | 14 | 24 | — | 0 | 16 | 2 | 1 | — | 0 | 0 | — | — |
| Texas§ | — | 0 | 2 | 3 | 2 | — | 0 | 1 | — | — | — | 0 | 1 | 1 | — |
| Mountain | — | 0 | 0 | — | — | — | 0 | 0 | — | — | — | 0 | 0 | — | 1 |
| Arizona | — | 0 | 0 | — | — | — | 0 | 0 | — | — | — | 0 | 0 | — | 1 |
| Colorado | — | 0 | 0 | — | — | — | 0 | 0 | — | — | — | 0 | 0 | — | — |
| Idaho§ | — | 0 | 0 | — | — | — | 0 | 0 | — | — | — | 0 | 0 | — | — |
| Montana§ | — | 0 | 0 | — | — | — | 0 | 0 | — | — | — | 0 | 0 | — | — |
| Nevada§ | — | 0 | 0 | — | — | — | 0 | 0 | — | — | — | 0 | 0 | — | — |
| New Mexico§ | — | 0 | 0 | — | — | — | 0 | 0 | — | — | — | 0 | 0 | — | — |
| Utah | — | 0 | 0 | — | — | — | 0 | 0 | — | — | — | 0 | 0 | — | — |
| Wyoming§ | — | 0 | 0 | — | — | — | 0 | 0 | — | — | — | 0 | 0 | — | — |
| Pacific | — | 0 | 1 | 1 | 3 | — | 0 | 0 | — | 2 | — | 0 | 1 | — | — |
| Alaska | — | 0 | 0 | — | — | — | 0 | 0 | — | — | — | 0 | 0 | — | — |
| California | — | 0 | 1 | 1 | 3 | — | 0 | 0 | — | 2 | — | 0 | 1 | — | — |
| Hawaii | — | 0 | 0 | — | — | — | 0 | 0 | — | — | — | 0 | 0 | — | — |
| Oregon | — | 0 | 0 | — | — | — | 0 | 0 | — | — | — | 0 | 0 | — | — |
| Washington | — | 0 | 0 | — | — | — | 0 | 0 | — | — | — | 0 | 0 | — | — |
| Territories | | | | | | | | | | | | | | | |
| American Samoa | — | 0 | 0 | — | — | — | 0 | 0 | — | — | — | 0 | 0 | — | — |
| C.N.M.I. | — | — | — | — | — | — | — | — | — | — | — | — | — | — | — |
| Guam | — | 0 | 0 | — | — | — | 0 | 0 | — | — | — | 0 | 0 | — | — |
| Puerto Rico | — | 0 | 0 | — | — | — | 0 | 0 | — | — | — | 0 | 0 | — | — |
| U.S. Virgin Islands | — | 0 | 0 | — | — | — | 0 | 0 | — | — | — | 0 | 0 | — | — |

C.N.M.I.: Commonwealth of Northern Mariana Islands.

U: Unavailable. —: No reported cases. N: Not reportable. NN: Not Nationally Notifiable. Cum: Cumulative year-to-date counts. Med: Median. Max: Maximum.

* Incidence data for reporting year 2010 is provisional.

† Cumulative total *E. ewingii* cases reported for year 2010 = 10.

§ Contains data reported through the National Electronic Disease Surveillance System (NEDSS).

MMWR Morbidity and Mortality Weekly Report

TABLE II. (Continued) Provisional cases of selected notifiable diseases, United States, weeks ending October 16, 2010, and October 17, 2009 (41st week)*

| Reporting area | Giardiasis | | | | Gonorrhea | | | | Haemophilus influenzae, invasive† All ages, all serotypes | | | | | | |
|-----------------------------|--------------|-------------------|-----|----------|-----------|--------------|-------------------|-------|--|----------|--------------|-------------------|-----|----------|----------|
| | Current week | Previous 52 weeks | | Cum 2010 | Cum 2009 | Current week | Previous 52 weeks | | Cum 2010 | Cum 2009 | Current week | Previous 52 weeks | | Cum 2010 | Cum 2009 |
| | | Med | Max | | | | Med | Max | | | | Med | Max | | |
| United States | 233 | 346 | 666 | 14,003 | 15,022 | 2,933 | 5,446 | 6,325 | 215,513 | 242,009 | 17 | 59 | 171 | 2,272 | 2,294 |
| New England | 10 | 31 | 53 | 1,188 | 1,421 | 57 | 100 | 196 | 4,091 | 3,864 | — | 3 | 21 | 127 | 155 |
| Connecticut | — | 5 | 13 | 236 | 242 | — | 43 | 169 | 1,706 | 1,847 | — | 0 | 15 | 28 | 42 |
| Maine [§] | 8 | 3 | 12 | 172 | 180 | — | 3 | 11 | 136 | 110 | — | 0 | 2 | 10 | 17 |
| Massachusetts | — | 12 | 20 | 463 | 610 | 39 | 45 | 81 | 1,851 | 1,519 | — | 2 | 8 | 65 | 75 |
| New Hampshire | — | 3 | 9 | 118 | 169 | 4 | 3 | 7 | 119 | 83 | — | 0 | 2 | 9 | 10 |
| Rhode Island [§] | — | 1 | 7 | 49 | 52 | 14 | 5 | 13 | 232 | 269 | — | 0 | 1 | 8 | 7 |
| Vermont [§] | 2 | 4 | 10 | 150 | 168 | — | 0 | 17 | 47 | 36 | — | 0 | 1 | 7 | 4 |
| Mid. Atlantic | 46 | 60 | 103 | 2,392 | 2,789 | 419 | 677 | 941 | 27,740 | 25,077 | 5 | 11 | 34 | 442 | 461 |
| New Jersey | — | 5 | 13 | 207 | 357 | 116 | 101 | 161 | 4,330 | 3,800 | — | 2 | 7 | 73 | 105 |
| New York (Upstate) | 30 | 22 | 84 | 899 | 1,058 | 99 | 104 | 422 | 4,409 | 4,564 | 4 | 3 | 20 | 118 | 112 |
| New York City | 6 | 16 | 33 | 698 | 682 | 27 | 228 | 394 | 9,472 | 8,740 | — | 2 | 6 | 86 | 57 |
| Pennsylvania | 10 | 14 | 24 | 588 | 692 | 177 | 224 | 342 | 9,529 | 7,973 | 1 | 4 | 9 | 165 | 187 |
| E.N. Central | 29 | 52 | 78 | 2,279 | 2,384 | 231 | 935 | 1,260 | 36,850 | 51,185 | 3 | 10 | 20 | 392 | 361 |
| Illinois | — | 12 | 24 | 469 | 514 | 8 | 183 | 380 | 6,266 | 16,288 | — | 3 | 9 | 118 | 135 |
| Indiana | — | 5 | 13 | 191 | 239 | — | 91 | 218 | 4,228 | 5,977 | — | 1 | 6 | 69 | 65 |
| Michigan | 5 | 13 | 23 | 543 | 543 | 151 | 243 | 472 | 10,408 | 11,972 | — | 0 | 4 | 26 | 18 |
| Ohio | 23 | 16 | 24 | 677 | 666 | 40 | 316 | 372 | 12,301 | 12,774 | 3 | 2 | 6 | 95 | 82 |
| Wisconsin | 1 | 9 | 26 | 399 | 422 | 32 | 93 | 155 | 3,647 | 4,174 | — | 2 | 5 | 84 | 61 |
| W.N. Central | 21 | 25 | 165 | 1,156 | 1,296 | 77 | 275 | 357 | 10,863 | 11,994 | 2 | 3 | 24 | 132 | 133 |
| Iowa | 3 | 5 | 11 | 232 | 246 | 4 | 32 | 52 | 1,323 | 1,334 | — | 0 | 1 | 1 | — |
| Kansas | 2 | 4 | 10 | 177 | 126 | 1 | 37 | 83 | 1,510 | 2,065 | — | 0 | 2 | 12 | 13 |
| Minnesota | — | 0 | 135 | 136 | 250 | — | 41 | 62 | 1,515 | 1,866 | — | 0 | 17 | 25 | 47 |
| Missouri | 9 | 8 | 25 | 340 | 423 | 72 | 125 | 172 | 5,222 | 5,246 | 1 | 1 | 6 | 66 | 46 |
| Nebraska [§] | 2 | 4 | 9 | 178 | 140 | — | 22 | 50 | 895 | 1,099 | 1 | 0 | 2 | 18 | 21 |
| North Dakota | 5 | 0 | 8 | 25 | 20 | — | 2 | 11 | 94 | 101 | — | 0 | 4 | 10 | 6 |
| South Dakota | — | 2 | 7 | 68 | 91 | — | 6 | 17 | 304 | 283 | — | 0 | 0 | — | — |
| S. Atlantic | 61 | 75 | 143 | 3,012 | 2,913 | 1,033 | 1,275 | 1,651 | 51,660 | 60,167 | 4 | 14 | 27 | 609 | 625 |
| Delaware | — | 0 | 5 | 25 | 22 | 16 | 18 | 48 | 796 | 772 | — | 0 | 1 | 5 | 3 |
| District of Columbia | — | 1 | 4 | 28 | 57 | 21 | 37 | 65 | 1,478 | 2,160 | — | 0 | 1 | 2 | 4 |
| Florida | 43 | 39 | 87 | 1,715 | 1,527 | 215 | 378 | 479 | 15,941 | 17,017 | 3 | 3 | 9 | 148 | 187 |
| Georgia | — | 11 | 51 | 485 | 594 | 101 | 96 | 421 | 4,123 | 10,929 | — | 3 | 9 | 139 | 123 |
| Maryland [§] | 3 | 5 | 11 | 210 | 226 | 135 | 132 | 237 | 5,346 | 4,845 | 1 | 1 | 6 | 54 | 75 |
| North Carolina | N | 0 | 0 | N | N | 201 | 258 | 596 | 10,936 | 11,356 | — | 2 | 9 | 105 | 76 |
| South Carolina [§] | 2 | 2 | 9 | 119 | 86 | 239 | 152 | 233 | 6,554 | 6,805 | — | 2 | 7 | 69 | 60 |
| Virginia [§] | 13 | 9 | 36 | 397 | 361 | 93 | 161 | 271 | 6,076 | 5,875 | — | 2 | 4 | 67 | 71 |
| West Virginia | — | 1 | 5 | 33 | 40 | 12 | 9 | 20 | 410 | 408 | — | 0 | 5 | 20 | 26 |
| E.S. Central | — | 5 | 15 | 198 | 337 | 405 | 479 | 698 | 19,005 | 21,469 | — | 3 | 12 | 138 | 139 |
| Alabama [§] | — | 4 | 8 | 145 | 162 | 139 | 145 | 217 | 6,002 | 6,080 | — | 0 | 3 | 21 | 34 |
| Kentucky | N | 0 | 0 | N | N | 78 | 76 | 156 | 3,098 | 2,874 | — | 0 | 2 | 27 | 19 |
| Mississippi | N | 0 | 0 | N | N | 118 | 109 | 216 | 4,249 | 6,000 | — | 0 | 2 | 10 | 7 |
| Tennessee [§] | — | 1 | 10 | 53 | 175 | 70 | 147 | 196 | 5,656 | 6,515 | — | 2 | 10 | 80 | 79 |
| W.S. Central | 3 | 8 | 16 | 296 | 413 | 262 | 795 | 1,236 | 33,115 | 38,373 | 2 | 2 | 20 | 103 | 98 |
| Arkansas [§] | 2 | 2 | 9 | 102 | 115 | 102 | 74 | 133 | 2,885 | 3,606 | — | 0 | 3 | 14 | 15 |
| Louisiana | 1 | 3 | 9 | 131 | 168 | 71 | 68 | 441 | 3,169 | 7,516 | — | 0 | 3 | 18 | 17 |
| Oklahoma | — | 2 | 7 | 63 | 130 | 89 | 79 | 359 | 3,615 | 3,683 | 2 | 1 | 15 | 63 | 62 |
| Texas [§] | N | 0 | 0 | N | N | — | 570 | 963 | 23,446 | 23,568 | — | 0 | 2 | 8 | 4 |
| Mountain | 18 | 30 | 50 | 1,283 | 1,346 | 86 | 181 | 262 | 7,091 | 7,449 | 1 | 5 | 15 | 234 | 202 |
| Arizona | — | 3 | 8 | 126 | 166 | 47 | 63 | 109 | 2,381 | 2,476 | — | 2 | 10 | 89 | 65 |
| Colorado | 13 | 13 | 27 | 551 | 396 | 16 | 53 | 94 | 2,105 | 2,245 | 1 | 1 | 5 | 66 | 59 |
| Idaho [§] | 4 | 4 | 9 | 169 | 162 | — | 2 | 6 | 87 | 81 | — | 0 | 2 | 13 | 3 |
| Montana [§] | 1 | 2 | 7 | 83 | 113 | — | 2 | 6 | 86 | 64 | — | 0 | 1 | 2 | 1 |
| Nevada [§] | — | 1 | 11 | 78 | 95 | — | 28 | 94 | 1,313 | 1,435 | — | 0 | 2 | 6 | 16 |
| New Mexico [§] | — | 2 | 5 | 73 | 105 | 23 | 19 | 41 | 837 | 849 | — | 1 | 5 | 34 | 27 |
| Utah | — | 4 | 12 | 171 | 254 | — | 6 | 15 | 254 | 242 | — | 0 | 4 | 18 | 28 |
| Wyoming [§] | — | 1 | 5 | 32 | 55 | — | 1 | 4 | 28 | 57 | — | 0 | 2 | 6 | 3 |
| Pacific | 45 | 53 | 133 | 2,199 | 2,123 | 363 | 594 | 810 | 25,098 | 22,431 | — | 2 | 9 | 95 | 120 |
| Alaska | — | 2 | 6 | 78 | 95 | — | 23 | 37 | 991 | 771 | — | 0 | 2 | 19 | 15 |
| California | 24 | 33 | 61 | 1,370 | 1,384 | 305 | 485 | 692 | 20,718 | 18,484 | — | 0 | 4 | 12 | 39 |
| Hawaii | 1 | 0 | 4 | 25 | 18 | — | 14 | 25 | 581 | 506 | — | 0 | 2 | 7 | 27 |
| Oregon | 2 | 9 | 23 | 393 | 329 | 8 | 19 | 43 | 779 | 835 | — | 1 | 5 | 53 | 36 |
| Washington | 18 | 8 | 75 | 333 | 297 | 50 | 50 | 69 | 2,029 | 1,835 | — | 0 | 4 | 4 | 3 |
| Territories | | | | | | | | | | | | | | | |
| American Samoa | — | 0 | 0 | — | — | — | 0 | 0 | — | — | — | 0 | 0 | — | — |
| C.N.M.I. | — | — | — | — | — | — | — | — | — | — | — | — | — | — | — |
| Guam | — | 0 | 1 | 2 | 3 | — | 0 | 4 | 28 | 19 | — | 0 | 0 | — | — |
| Puerto Rico | — | 1 | 8 | 57 | 137 | 9 | 5 | 14 | 227 | 195 | — | 0 | 1 | 1 | 4 |
| U.S. Virgin Islands | — | 0 | 0 | — | — | — | 2 | 7 | 78 | 100 | — | 0 | 0 | — | — |

C.N.M.I.: Commonwealth of Northern Mariana Islands.

U: Unavailable. —: No reported cases. N: Not reportable. NN: Not Nationally Notifiable. Cum: Cumulative year-to-date counts. Med: Median. Max: Maximum.

* Incidence data for reporting year 2010 is provisional.

† Data for *H. influenzae* (age <5 yrs for serotype b, nonserotype b, and unknown serotype) are available in Table I.

§ Contains data reported through the National Electronic Disease Surveillance System (NEDSS).

MMWR Morbidity and Mortality Weekly Report

TABLE II. (Continued) Provisional cases of selected notifiable diseases, United States, weeks ending October 16, 2010, and October 17, 2009 (41st week)*

| Reporting area | Hepatitis (viral, acute), by type | | | | | | | | | | | | | | |
|----------------------|-----------------------------------|-------------------|----|----------|----------|--------------|-------------------|-----|----------|----------|--------------|-------------------|----|----------|----------|
| | A | | | | B | | | | C | | | | | | |
| | Current week | Previous 52 weeks | | Cum 2010 | Cum 2009 | Current week | Previous 52 weeks | | Cum 2010 | Cum 2009 | Current week | Previous 52 weeks | | Cum 2010 | Cum 2009 |
| | Med | Max | | | | Med | Max | | | | Med | Max | | | |
| United States | 21 | 30 | 69 | 1,191 | 1,598 | 31 | 60 | 204 | 2,418 | 2,592 | 5 | 15 | 44 | 635 | 582 |
| New England | — | 2 | 5 | 75 | 93 | — | 1 | 5 | 42 | 45 | — | 1 | 3 | 29 | 53 |
| Connecticut | — | 0 | 3 | 23 | 18 | — | 0 | 2 | 15 | 13 | — | 0 | 3 | 19 | 41 |
| Maine† | — | 0 | 1 | 7 | 1 | — | 0 | 2 | 11 | 11 | — | 0 | 1 | — | 1 |
| Massachusetts | — | 1 | 4 | 36 | 58 | — | 0 | 2 | 8 | 17 | — | 0 | 1 | 9 | 10 |
| New Hampshire | — | 0 | 1 | 1 | 7 | — | 0 | 2 | 6 | 4 | N | 0 | 0 | N | N |
| Rhode Island† | — | 0 | 4 | 8 | 7 | U | 0 | 0 | U | U | U | 0 | 0 | U | U |
| Vermont† | — | 0 | 0 | — | 2 | — | 0 | 1 | 2 | — | — | 0 | 1 | 1 | 1 |
| Mid. Atlantic | 3 | 4 | 8 | 157 | 229 | 2 | 5 | 10 | 227 | 274 | — | 2 | 6 | 83 | 80 |
| New Jersey | — | 0 | 3 | 11 | 59 | — | 1 | 5 | 54 | 83 | — | 0 | 2 | 10 | 5 |
| New York (Upstate) | 3 | 1 | 4 | 51 | 39 | 2 | 1 | 6 | 41 | 46 | — | 1 | 4 | 48 | 37 |
| New York City | — | 1 | 4 | 53 | 72 | — | 2 | 4 | 71 | 56 | — | 0 | 0 | — | 5 |
| Pennsylvania | — | 1 | 4 | 42 | 59 | — | 1 | 5 | 61 | 89 | — | 0 | 3 | 25 | 33 |
| E.N. Central | 2 | 4 | 8 | 168 | 243 | — | 9 | 17 | 369 | 353 | — | 2 | 9 | 103 | 72 |
| Illinois | — | 1 | 3 | 39 | 112 | — | 2 | 6 | 65 | 97 | — | 0 | 1 | 1 | 4 |
| Indiana | — | 0 | 2 | 15 | 16 | — | 1 | 5 | 47 | 57 | — | 0 | 2 | 21 | 15 |
| Michigan | 1 | 1 | 4 | 50 | 56 | — | 3 | 6 | 99 | 107 | — | 1 | 6 | 65 | 26 |
| Ohio | 1 | 0 | 5 | 40 | 34 | — | 2 | 6 | 80 | 73 | — | 0 | 1 | 9 | 24 |
| Wisconsin | — | 0 | 3 | 24 | 25 | — | 1 | 8 | 78 | 19 | — | 0 | 2 | 7 | 3 |
| W.N. Central | — | 1 | 13 | 64 | 94 | 2 | 2 | 15 | 94 | 114 | — | 0 | 11 | 16 | 17 |
| Iowa | — | 0 | 3 | 6 | 32 | — | 0 | 2 | 12 | 28 | — | 0 | 1 | — | 9 |
| Kansas | — | 0 | 3 | 11 | 7 | — | 0 | 2 | 6 | 6 | — | 0 | 1 | 1 | 1 |
| Minnesota | — | 0 | 12 | 14 | 15 | — | 0 | 13 | 7 | 20 | — | 0 | 9 | 6 | 3 |
| Missouri | — | 0 | 2 | 20 | 19 | 2 | 1 | 3 | 56 | 38 | — | 0 | 1 | 6 | — |
| Nebraska† | — | 0 | 4 | 12 | 18 | — | 0 | 2 | 12 | 19 | — | 0 | 1 | 3 | 2 |
| North Dakota | — | 0 | 1 | — | — | — | 0 | 0 | — | — | — | 0 | 1 | — | 1 |
| South Dakota | — | 0 | 1 | 1 | 3 | — | 0 | 1 | 1 | 3 | — | 0 | 0 | — | 1 |
| S. Atlantic | 5 | 8 | 14 | 284 | 342 | 13 | 16 | 40 | 701 | 713 | 1 | 4 | 8 | 135 | 133 |
| Delaware | — | 0 | 1 | 7 | 3 | — | 0 | 2 | 20 | 25 | U | 0 | 0 | U | U |
| District of Columbia | — | 0 | 1 | 1 | 1 | — | 0 | 1 | 3 | 10 | — | 0 | 1 | 2 | 1 |
| Florida | 4 | 3 | 7 | 113 | 146 | 7 | 6 | 12 | 244 | 231 | — | 1 | 6 | 44 | 35 |
| Georgia | — | 1 | 3 | 33 | 38 | 2 | 3 | 7 | 118 | 122 | — | 0 | 2 | 7 | 30 |
| Maryland† | — | 0 | 4 | 22 | 39 | 1 | 1 | 6 | 52 | 61 | — | 0 | 2 | 20 | 19 |
| North Carolina | 1 | 0 | 5 | 44 | 34 | 1 | 1 | 16 | 82 | 93 | 1 | 0 | 3 | 36 | 20 |
| South Carolina† | — | 1 | 3 | 22 | 50 | 2 | 1 | 4 | 47 | 43 | — | 0 | 1 | 1 | 1 |
| Virginia† | — | 1 | 6 | 40 | 28 | — | 1 | 14 | 76 | 74 | — | 0 | 2 | 11 | 8 |
| West Virginia | — | 0 | 2 | 2 | 3 | — | 0 | 14 | 59 | 54 | — | 0 | 5 | 14 | 19 |
| E.S. Central | — | 1 | 3 | 33 | 34 | 3 | 7 | 13 | 279 | 268 | 2 | 3 | 7 | 118 | 81 |
| Alabama† | — | 0 | 1 | 6 | 9 | 2 | 1 | 5 | 56 | 73 | — | 0 | 1 | 5 | 7 |
| Kentucky | — | 0 | 2 | 13 | 8 | 1 | 2 | 8 | 99 | 64 | — | 2 | 5 | 81 | 48 |
| Mississippi | — | 0 | 1 | 2 | 8 | — | 1 | 3 | 27 | 26 | U | 0 | 0 | U | U |
| Tennessee† | — | 0 | 2 | 12 | 9 | — | 2 | 8 | 97 | 105 | 2 | 1 | 4 | 32 | 26 |
| W.S. Central | 4 | 2 | 19 | 102 | 160 | 5 | 9 | 109 | 373 | 454 | 2 | 1 | 14 | 58 | 45 |
| Arkansas† | — | 0 | 3 | — | 7 | — | 0 | 4 | 32 | 54 | — | 0 | 1 | — | 2 |
| Louisiana | — | 0 | 2 | 7 | 5 | — | 1 | 4 | 40 | 56 | — | 0 | 1 | 5 | 7 |
| Oklahoma | — | 0 | 3 | — | 3 | 2 | 2 | 19 | 76 | 79 | 2 | 0 | 12 | 23 | 12 |
| Texas† | 4 | 2 | 18 | 95 | 145 | 3 | 5 | 87 | 225 | 265 | — | 1 | 3 | 30 | 24 |
| Mountain | 1 | 3 | 8 | 118 | 136 | — | 2 | 8 | 94 | 113 | — | 1 | 5 | 41 | 40 |
| Arizona | — | 1 | 5 | 56 | 58 | — | 0 | 2 | 23 | 38 | U | 0 | 0 | U | U |
| Colorado | 1 | 1 | 3 | 26 | 44 | — | 0 | 3 | 21 | 22 | — | 0 | 2 | 7 | 24 |
| Idaho† | — | 0 | 2 | 6 | 4 | — | 0 | 1 | 6 | 11 | — | 0 | 2 | 9 | 4 |
| Montana† | — | 0 | 1 | 4 | 6 | — | 0 | 1 | 1 | 1 | — | 0 | 0 | — | 1 |
| Nevada† | — | 0 | 2 | 12 | 10 | — | 0 | 3 | 33 | 27 | — | 0 | 1 | 4 | 3 |
| New Mexico† | — | 0 | 1 | 3 | 7 | — | 0 | 1 | 4 | 6 | — | 0 | 2 | 11 | 5 |
| Utah | — | 0 | 1 | 8 | 5 | — | 0 | 1 | 5 | 4 | — | 0 | 2 | 10 | 3 |
| Wyoming† | — | 0 | 3 | 3 | 2 | — | 0 | 1 | 1 | 4 | — | 0 | 0 | — | — |
| Pacific | 6 | 5 | 16 | 190 | 267 | 6 | 6 | 20 | 239 | 258 | — | 1 | 6 | 52 | 61 |
| Alaska | — | 0 | 1 | 1 | 2 | — | 0 | 1 | 3 | 2 | U | 0 | 2 | U | U |
| California | 5 | 4 | 15 | 153 | 211 | 4 | 4 | 17 | 162 | 185 | — | 0 | 4 | 21 | 32 |
| Hawaii | — | 0 | 2 | 3 | 8 | — | 0 | 1 | 1 | 5 | U | 0 | 0 | U | U |
| Oregon | — | 0 | 2 | 17 | 13 | — | 1 | 4 | 34 | 32 | — | 0 | 3 | 13 | 15 |
| Washington | 1 | 0 | 2 | 16 | 33 | 2 | 1 | 4 | 39 | 34 | — | 0 | 6 | 18 | 14 |
| Territories | | | | | | | | | | | | | | | |
| American Samoa | — | 0 | 0 | — | — | — | 0 | 0 | — | — | — | 0 | 0 | — | — |
| C.N.M.I. | — | — | — | — | — | — | — | — | — | — | — | — | — | — | — |
| Guam | — | 0 | 6 | 16 | 4 | — | 1 | 6 | 35 | 50 | — | 0 | 6 | 28 | 42 |
| Puerto Rico | — | 0 | 1 | 12 | 21 | — | 0 | 2 | 16 | 28 | — | 0 | 0 | — | — |
| U.S. Virgin Islands | — | 0 | 0 | — | — | — | 0 | 0 | — | — | — | 0 | 0 | — | — |

C.N.M.I.: Commonwealth of Northern Mariana Islands.

U: Unavailable. —: No reported cases. N: Not reportable. NN: Not Nationally Notifiable. Cum: Cumulative year-to-date counts. Med: Median. Max: Maximum.

* Incidence data for reporting year 2010 is provisional.

† Contains data reported through the National Electronic Disease Surveillance System (NEDSS).

TABLE II. (Continued) Provisional cases of selected notifiable diseases, United States, weeks ending October 16, 2010, and October 17, 2009 (41st week)*

| Reporting area | Legionellosis | | | | | Lyme disease | | | | | Malaria | | | | |
|----------------------|---------------|-------------------|-----|----------|----------|--------------|-------------------|-------|----------|----------|--------------|-------------------|-----|----------|----------|
| | Current week | Previous 52 weeks | | Cum 2010 | Cum 2009 | Current week | Previous 52 weeks | | Cum 2010 | Cum 2009 | Current week | Previous 52 weeks | | Cum 2010 | Cum 2009 |
| | | Med | Max | | | | Med | Max | | | | Med | Max | | |
| United States | 46 | 57 | 112 | 2,402 | 2,759 | 249 | 418 | 2,336 | 21,637 | 32,306 | 21 | 26 | 89 | 1,122 | 1,130 |
| New England | — | 3 | 13 | 153 | 170 | 27 | 121 | 423 | 6,060 | 11,155 | — | 1 | 4 | 54 | 53 |
| Connecticut | — | 0 | 4 | 32 | 47 | 5 | 42 | 200 | 2,218 | 3,770 | — | 0 | 1 | 1 | 5 |
| Maine† | — | 0 | 2 | 9 | 7 | 20 | 12 | 76 | 598 | 743 | — | 0 | 1 | 5 | 2 |
| Massachusetts | — | 1 | 7 | 77 | 84 | — | 36 | 161 | 1,876 | 4,841 | — | 1 | 3 | 37 | 34 |
| New Hampshire | — | 0 | 5 | 15 | 11 | — | 22 | 63 | 996 | 1,235 | — | 0 | 1 | 3 | 4 |
| Rhode Island† | — | 0 | 3 | 11 | 14 | 1 | 1 | 35 | 101 | 214 | — | 0 | 1 | 5 | 5 |
| Vermont† | — | 0 | 2 | 9 | 7 | 1 | 4 | 26 | 271 | 352 | — | 0 | 1 | 3 | 3 |
| Mid. Atlantic | 18 | 15 | 31 | 619 | 998 | 90 | 175 | 694 | 10,357 | 14,068 | 2 | 7 | 17 | 306 | 330 |
| New Jersey | — | 2 | 8 | 52 | 180 | — | 44 | 195 | 2,631 | 4,564 | — | 0 | 4 | 1 | 86 |
| New York (Upstate) | 10 | 5 | 19 | 217 | 295 | 66 | 53 | 577 | 2,466 | 3,391 | 1 | 1 | 6 | 63 | 40 |
| New York City | — | 2 | 8 | 108 | 203 | — | 2 | 18 | 58 | 937 | — | 4 | 14 | 197 | 159 |
| Pennsylvania | 8 | 6 | 16 | 242 | 320 | 24 | 74 | 373 | 5,202 | 5,176 | 1 | 1 | 3 | 45 | 45 |
| E.N. Central | 8 | 11 | 40 | 573 | 593 | 2 | 18 | 161 | 1,614 | 2,752 | 2 | 2 | 9 | 123 | 148 |
| Illinois | — | 1 | 15 | 118 | 105 | — | 1 | 16 | 104 | 134 | — | 1 | 7 | 44 | 62 |
| Indiana | 1 | 2 | 6 | 87 | 52 | — | 1 | 7 | 64 | 78 | — | 0 | 2 | 7 | 20 |
| Michigan | 3 | 3 | 19 | 136 | 131 | 2 | 1 | 14 | 90 | 94 | — | 0 | 4 | 26 | 25 |
| Ohio | 4 | 4 | 12 | 186 | 236 | — | 0 | 5 | 21 | 45 | 2 | 0 | 5 | 37 | 32 |
| Wisconsin | — | 1 | 11 | 46 | 69 | — | 16 | 136 | 1,335 | 2,401 | — | 0 | 1 | 9 | 9 |
| W.N. Central | 7 | 2 | 19 | 99 | 97 | 3 | 3 | 1,395 | 108 | 200 | 1 | 1 | 11 | 60 | 56 |
| Iowa | — | 0 | 2 | 13 | 20 | — | 1 | 10 | 75 | 103 | — | 0 | 2 | 9 | 10 |
| Kansas | — | 0 | 2 | 8 | 7 | — | 0 | 1 | 6 | 18 | — | 0 | 2 | 10 | 6 |
| Minnesota | 4 | 0 | 16 | 27 | 8 | — | 0 | 1,380 | — | 71 | — | 0 | 11 | 3 | 23 |
| Missouri | 2 | 0 | 4 | 30 | 49 | — | 0 | 1 | 1 | 3 | 1 | 0 | 3 | 20 | 10 |
| Nebraska† | — | 0 | 2 | 8 | 11 | — | 0 | 2 | 9 | 4 | — | 0 | 2 | 15 | 6 |
| North Dakota | 1 | 0 | 1 | 6 | 1 | 3 | 0 | 15 | 16 | — | — | 0 | 1 | — | — |
| South Dakota | — | 0 | 2 | 7 | 1 | — | 0 | 1 | 1 | 1 | — | 0 | 2 | 3 | 1 |
| S. Atlantic | 6 | 10 | 26 | 414 | 442 | 123 | 60 | 169 | 3,172 | 3,744 | 15 | 6 | 35 | 296 | 298 |
| Delaware | — | 0 | 3 | 13 | 17 | 2 | 11 | 31 | 538 | 864 | — | 0 | 1 | 2 | 4 |
| District of Columbia | — | 0 | 4 | 13 | 18 | — | 0 | 4 | 19 | 57 | — | 0 | 2 | 8 | 15 |
| Florida | 2 | 3 | 9 | 141 | 136 | 1 | 2 | 11 | 84 | 76 | 1 | 2 | 7 | 106 | 80 |
| Georgia | — | 1 | 4 | 37 | 46 | — | 0 | 2 | 8 | 38 | — | 0 | 2 | 3 | 61 |
| Maryland† | 4 | 2 | 12 | 91 | 115 | 95 | 25 | 74 | 1,383 | 1,785 | 6 | 1 | 18 | 70 | 61 |
| North Carolina | — | 0 | 7 | 47 | 48 | 2 | 1 | 9 | 75 | 89 | 5 | 0 | 13 | 45 | 24 |
| South Carolina† | — | 0 | 2 | 9 | 9 | — | 0 | 3 | 27 | 32 | 1 | 0 | 1 | 4 | 4 |
| Virginia† | — | 1 | 6 | 52 | 46 | 17 | 15 | 79 | 933 | 671 | 2 | 1 | 5 | 55 | 47 |
| West Virginia | — | 0 | 3 | 11 | 7 | 6 | 0 | 32 | 105 | 132 | — | 0 | 2 | 3 | 2 |
| E.S. Central | 2 | 2 | 10 | 103 | 114 | — | 1 | 4 | 39 | 31 | — | 0 | 3 | 26 | 29 |
| Alabama† | — | 0 | 2 | 14 | 14 | — | 0 | 1 | 2 | 2 | — | 0 | 1 | 6 | 8 |
| Kentucky | — | 0 | 4 | 22 | 43 | — | 0 | 1 | 4 | 1 | — | 0 | 3 | 6 | 9 |
| Mississippi | — | 0 | 3 | 9 | 4 | — | 0 | 0 | — | — | — | 0 | 2 | 2 | 3 |
| Tennessee† | 2 | 1 | 6 | 58 | 53 | — | 1 | 4 | 33 | 28 | — | 0 | 2 | 12 | 9 |
| W.S. Central | 1 | 3 | 14 | 109 | 90 | 1 | 2 | 44 | 82 | 174 | — | 1 | 31 | 69 | 56 |
| Arkansas† | — | 0 | 2 | 12 | 7 | — | 0 | 0 | — | — | — | 0 | 1 | 2 | 5 |
| Louisiana | — | 0 | 3 | 7 | 10 | — | 0 | 1 | 2 | — | — | 0 | 1 | 3 | 5 |
| Oklahoma | — | 0 | 4 | 11 | 3 | — | 0 | 2 | — | — | — | 0 | 1 | 5 | 1 |
| Texas† | 1 | 2 | 10 | 79 | 70 | 1 | 2 | 42 | 80 | 174 | — | 1 | 30 | 59 | 45 |
| Mountain | — | 3 | 10 | 124 | 112 | — | 0 | 3 | 19 | 50 | — | 1 | 3 | 49 | 43 |
| Arizona | — | 1 | 5 | 43 | 36 | — | 0 | 1 | 3 | 5 | — | 0 | 2 | 22 | 8 |
| Colorado | — | 0 | 5 | 27 | 19 | — | 0 | 1 | 2 | 1 | — | 0 | 2 | 15 | 24 |
| Idaho† | — | 0 | 1 | 5 | 5 | — | 0 | 2 | 6 | 14 | — | 0 | 1 | 2 | 2 |
| Montana† | — | 0 | 1 | 4 | 5 | — | 0 | 1 | 1 | 3 | — | 0 | 1 | 2 | 5 |
| Nevada† | — | 0 | 2 | 18 | 12 | — | 0 | 1 | — | 12 | — | 0 | 1 | 4 | — |
| New Mexico† | — | 0 | 2 | 6 | 9 | — | 0 | 2 | 5 | 5 | — | 0 | 1 | 1 | — |
| Utah | — | 0 | 3 | 16 | 22 | — | 0 | 1 | 2 | 8 | — | 0 | 1 | 3 | 4 |
| Wyoming† | — | 0 | 2 | 5 | 4 | — | 0 | 1 | — | 2 | — | 0 | 0 | — | — |
| Pacific | 4 | 5 | 19 | 208 | 143 | 3 | 4 | 11 | 186 | 132 | 1 | 3 | 19 | 139 | 117 |
| Alaska | — | 0 | 2 | 2 | 1 | — | 0 | 1 | 6 | 5 | — | 0 | 1 | 2 | 2 |
| California | 2 | 4 | 19 | 177 | 108 | 3 | 3 | 10 | 125 | 84 | 1 | 2 | 13 | 98 | 86 |
| Hawaii | — | 0 | 1 | 1 | 1 | N | 0 | 0 | N | N | — | 0 | 1 | 1 | 1 |
| Oregon | — | 0 | 3 | 11 | 14 | — | 1 | 4 | 46 | 33 | — | 0 | 1 | 9 | 11 |
| Washington | 2 | 0 | 4 | 17 | 19 | — | 0 | 3 | 9 | 10 | — | 0 | 5 | 29 | 17 |
| Territories | | | | | | | | | | | | | | | |
| American Samoa | — | 0 | 0 | — | — | N | 0 | 0 | N | N | — | 0 | 0 | — | — |
| C.N.M.I. | — | — | — | — | — | — | — | — | — | — | — | — | — | — | — |
| Guam | — | 0 | 1 | 1 | — | — | 0 | 0 | — | — | — | 0 | 0 | — | — |
| Puerto Rico | — | 0 | 1 | — | 1 | N | 0 | 0 | N | N | — | 0 | 2 | 4 | 5 |
| U.S. Virgin Islands | — | 0 | 0 | — | — | — | 0 | 0 | — | — | — | 0 | 0 | — | — |

C.N.M.I.: Commonwealth of Northern Mariana Islands.

U: Unavailable. —: No reported cases. N: Not reportable. NN: Not Nationally Notifiable. Cum: Cumulative year-to-date counts. Med: Median. Max: Maximum.

* Incidence data for reporting year 2010 is provisional.

† Contains data reported through the National Electronic Disease Surveillance System (NEDSS).

MMWR Morbidity and Mortality Weekly Report

TABLE II. (Continued) Provisional cases of selected notifiable diseases, United States, weeks ending October 16, 2010, and October 17, 2009 (41st week)*

| Reporting area | Meningococcal disease, invasive† | | | | | Pertussis | | | | | Rabies, animal | | | | |
|-----------------------------|----------------------------------|-------------------|----|----------|----------|--------------|-------------------|-------|----------|----------|----------------|-------------------|-----|----------|----------|
| | All groups | | | | | | | | | | | | | | |
| | Current week | Previous 52 weeks | | Cum 2010 | Cum 2009 | Current week | Previous 52 weeks | | Cum 2010 | Cum 2009 | Current week | Previous 52 weeks | | Cum 2010 | Cum 2009 |
| | Med | Max | | | | Med | Max | | | | Med | Max | | | |
| United States | 7 | 16 | 43 | 581 | 742 | 317 | 300 | 1,756 | 14,429 | 12,478 | 27 | 69 | 145 | 2,753 | 4,314 |
| New England | — | 0 | 2 | 13 | 27 | — | 8 | 20 | 339 | 545 | 3 | 4 | 15 | 185 | 281 |
| Connecticut | — | 0 | 2 | 2 | 3 | — | 1 | 8 | 92 | 44 | — | 0 | 14 | 59 | 126 |
| Maine [§] | — | 0 | 1 | 3 | 4 | — | 0 | 5 | 36 | 76 | 2 | 1 | 4 | 52 | 46 |
| Massachusetts | — | 0 | 1 | 3 | 12 | — | 4 | 11 | 164 | 310 | — | 0 | 0 | — | — |
| New Hampshire | — | 0 | 0 | — | 3 | — | 0 | 3 | 14 | 68 | — | 0 | 5 | 12 | 27 |
| Rhode Island [§] | — | 0 | 0 | — | 4 | — | 0 | 8 | 22 | 36 | — | 0 | 2 | 17 | 36 |
| Vermont [§] | — | 0 | 1 | 5 | 1 | — | 0 | 4 | 11 | 11 | 1 | 1 | 5 | 45 | 46 |
| Mid. Atlantic | 2 | 1 | 4 | 49 | 82 | 32 | 22 | 64 | 1,137 | 970 | 11 | 18 | 41 | 845 | 493 |
| New Jersey | — | 0 | 2 | 9 | 15 | — | 3 | 8 | 99 | 199 | — | 0 | 0 | — | — |
| New York (Upstate) | 1 | 0 | 3 | 10 | 17 | 5 | 8 | 27 | 401 | 174 | 11 | 8 | 19 | 423 | 376 |
| New York City | — | 0 | 2 | 14 | 14 | 5 | 0 | 9 | 71 | 79 | — | 1 | 12 | 112 | 17 |
| Pennsylvania | 1 | 0 | 2 | 16 | 36 | 22 | 9 | 39 | 566 | 518 | — | 5 | 24 | 310 | 100 |
| E.N. Central | 2 | 2 | 8 | 105 | 134 | 54 | 74 | 173 | 3,612 | 2,620 | 3 | 2 | 38 | 266 | 211 |
| Illinois | — | 0 | 4 | 19 | 34 | — | 12 | 29 | 574 | 556 | — | 1 | 22 | 160 | 79 |
| Indiana | — | 0 | 3 | 22 | 28 | — | 9 | 26 | 429 | 298 | — | 0 | 0 | — | 25 |
| Michigan | 1 | 0 | 2 | 17 | 18 | 11 | 22 | 51 | 1,022 | 706 | 3 | 1 | 5 | 63 | 63 |
| Ohio | 1 | 1 | 2 | 27 | 34 | 43 | 22 | 69 | 1,245 | 911 | — | 0 | 12 | 43 | 44 |
| Wisconsin | — | 0 | 2 | 20 | 20 | — | 6 | 17 | 342 | 149 | — | 0 | 0 | — | — |
| W.N. Central | — | 1 | 6 | 41 | 61 | 156 | 27 | 627 | 1,691 | 1,800 | 4 | 4 | 16 | 206 | 335 |
| Iowa | — | 0 | 3 | 9 | 8 | — | 6 | 25 | 359 | 195 | — | 0 | 2 | 7 | 30 |
| Kansas | — | 0 | 2 | 6 | 11 | — | 3 | 9 | 129 | 208 | — | 1 | 4 | 54 | 67 |
| Minnesota | — | 0 | 2 | 2 | 11 | 143 | 0 | 601 | 682 | 366 | — | 0 | 9 | 26 | 51 |
| Missouri | — | 0 | 3 | 17 | 21 | 5 | 8 | 25 | 291 | 855 | — | 1 | 6 | 62 | 62 |
| Nebraska [§] | — | 0 | 2 | 5 | 7 | 5 | 2 | 13 | 163 | 123 | 1 | 1 | 4 | 44 | 73 |
| North Dakota | — | 0 | 1 | 2 | 1 | 3 | 0 | 30 | 41 | 17 | 3 | 0 | 7 | 13 | 4 |
| South Dakota | — | 0 | 2 | — | 2 | — | 1 | 5 | 26 | 36 | — | 0 | 2 | — | 48 |
| S. Atlantic | — | 3 | 7 | 110 | 139 | 11 | 27 | 77 | 1,212 | 1,373 | 5 | 22 | 73 | 875 | 1,783 |
| Delaware | — | 0 | 1 | 2 | 2 | — | 0 | 4 | 10 | 12 | — | 0 | 0 | — | — |
| District of Columbia | — | 0 | 0 | — | — | — | 0 | 1 | 4 | 6 | — | 0 | 0 | — | — |
| Florida | — | 1 | 5 | 50 | 45 | 7 | 5 | 28 | 258 | 454 | — | 0 | 60 | 72 | 161 |
| Georgia | — | 0 | 2 | 9 | 28 | — | 3 | 18 | 185 | 205 | — | 0 | 13 | — | 337 |
| Maryland [§] | — | 0 | 1 | 6 | 9 | 1 | 2 | 8 | 95 | 120 | — | 6 | 14 | 297 | 327 |
| North Carolina | — | 0 | 2 | 14 | 27 | — | 1 | 32 | 124 | 166 | — | 0 | 11 | — | 414 |
| South Carolina [§] | — | 0 | 1 | 10 | 11 | 3 | 5 | 19 | 292 | 216 | — | 0 | 0 | — | — |
| Virginia [§] | — | 0 | 2 | 17 | 12 | — | 5 | 15 | 176 | 167 | 5 | 10 | 25 | 448 | 449 |
| West Virginia | — | 0 | 2 | 2 | 5 | — | 1 | 13 | 68 | 27 | — | 1 | 6 | 58 | 95 |
| E.S. Central | 1 | 1 | 4 | 34 | 25 | 2 | 14 | 32 | 589 | 671 | — | 3 | 7 | 126 | 126 |
| Alabama [§] | — | 0 | 2 | 6 | 7 | — | 4 | 8 | 154 | 263 | — | 0 | 4 | 41 | — |
| Kentucky | 1 | 0 | 2 | 16 | 4 | — | 4 | 13 | 208 | 196 | — | 0 | 4 | 16 | 43 |
| Mississippi | — | 0 | 1 | 3 | 3 | — | 1 | 6 | 53 | 56 | — | 0 | 1 | 1 | 4 |
| Tennessee [§] | — | 0 | 2 | 9 | 11 | 2 | 4 | 11 | 174 | 156 | — | 1 | 4 | 68 | 79 |
| W.S. Central | — | 1 | 9 | 65 | 68 | 17 | 57 | 753 | 2,249 | 2,619 | — | 1 | 30 | 61 | 772 |
| Arkansas [§] | — | 0 | 2 | 5 | 6 | — | 3 | 29 | 119 | 291 | — | 0 | 7 | 21 | 38 |
| Louisiana | — | 0 | 4 | 12 | 13 | — | 1 | 4 | 29 | 134 | — | 0 | 0 | — | — |
| Oklahoma | — | 0 | 7 | 15 | 10 | 1 | 0 | 41 | 54 | 41 | — | 0 | 30 | 40 | 30 |
| Texas [§] | — | 1 | 7 | 33 | 39 | 16 | 49 | 681 | 2,047 | 2,153 | — | 0 | 26 | — | 704 |
| Mountain | — | 1 | 6 | 45 | 54 | 16 | 22 | 46 | 1,008 | 795 | — | 1 | 8 | 66 | 94 |
| Arizona | — | 0 | 2 | 11 | 12 | 1 | 7 | 14 | 317 | 200 | — | 0 | 5 | — | — |
| Colorado | — | 0 | 4 | 14 | 18 | 11 | 4 | 15 | 182 | 188 | — | 0 | 0 | — | — |
| Idaho [§] | — | 0 | 2 | 7 | 6 | 4 | 3 | 19 | 170 | 68 | — | 0 | 2 | 11 | 8 |
| Montana [§] | — | 0 | 1 | 1 | 5 | — | 1 | 12 | 62 | 48 | — | 0 | 3 | 16 | 25 |
| Nevada [§] | — | 0 | 1 | 8 | 4 | — | 0 | 7 | 29 | 23 | — | 0 | 1 | 5 | 6 |
| New Mexico [§] | — | 0 | 1 | 3 | 3 | — | 2 | 9 | 84 | 59 | — | 0 | 3 | 11 | 22 |
| Utah | — | 0 | 1 | 1 | 2 | — | 3 | 10 | 154 | 187 | — | 0 | 1 | 2 | 12 |
| Wyoming [§] | — | 0 | 1 | — | 4 | — | 0 | 2 | 10 | 22 | — | 0 | 4 | 21 | 21 |
| Pacific | 2 | 3 | 16 | 119 | 152 | 29 | 35 | 189 | 2,592 | 1,085 | 1 | 3 | 12 | 123 | 219 |
| Alaska | — | 0 | 1 | 1 | 6 | — | 0 | 6 | 35 | 38 | — | 0 | 2 | 12 | 11 |
| California | 2 | 2 | 13 | 79 | 99 | 8 | 25 | 166 | 1,912 | 545 | 1 | 2 | 12 | 100 | 197 |
| Hawaii | — | 0 | 1 | 1 | 5 | — | 0 | 6 | 38 | 37 | — | 0 | 0 | — | — |
| Oregon | — | 1 | 3 | 25 | 29 | 1 | 6 | 16 | 279 | 230 | — | 0 | 2 | 11 | 11 |
| Washington | — | 0 | 7 | 13 | 13 | 20 | 4 | 38 | 328 | 235 | — | 0 | 0 | — | — |
| Territories | | | | | | | | | | | | | | | |
| American Samoa | — | 0 | 0 | — | — | — | 0 | 0 | — | — | N | 0 | 0 | N | N |
| C.N.M.I. | — | — | — | — | — | — | — | — | — | — | — | — | — | — | — |
| Guam | — | 0 | 0 | — | — | — | 0 | 2 | — | — | — | 0 | 0 | — | — |
| Puerto Rico | — | 0 | 1 | — | — | — | 0 | 1 | 2 | 1 | — | 1 | 3 | 36 | 34 |
| U.S. Virgin Islands | — | 0 | 0 | — | — | — | 0 | 0 | — | — | — | 0 | 0 | — | — |

C.N.M.I.: Commonwealth of Northern Mariana Islands.

U: Unavailable. —: No reported cases. N: Not reportable. NN: Not Nationally Notifiable. Cum: Cumulative year-to-date counts. Med: Median. Max: Maximum.

* Incidence data for reporting year 2010 is provisional.

† Data for meningococcal disease, invasive caused by serogroups A, C, Y, and W-135; serogroup B; other serogroup; and unknown serogroup are available in Table I.

§ Contains data reported through the National Electronic Disease Surveillance System (NEDSS).

MMWR Morbidity and Mortality Weekly Report

TABLE II. (Continued) Provisional cases of selected notifiable diseases, United States, weeks ending October 16, 2010, and October 17, 2009 (41st week)*

| Reporting area | Salmonellosis | | | | | Shiga toxin-producing <i>E. coli</i> (STEC) [†] | | | | | Shigellosis | | | | |
|-----------------------------|---------------|-------------------|-------|----------|----------|--|-------------------|-----|----------|----------|--------------|-------------------|-----|----------|----------|
| | Current week | Previous 52 weeks | | Cum 2010 | Cum 2009 | Current week | Previous 52 weeks | | Cum 2010 | Cum 2009 | Current week | Previous 52 weeks | | Cum 2010 | Cum 2009 |
| | | Med | Max | | | | Med | Max | | | | Med | Max | | |
| United States | 854 | 924 | 1,680 | 39,159 | 38,756 | 76 | 78 | 206 | 3,656 | 3,770 | 152 | 268 | 527 | 10,769 | 12,717 |
| New England | 3 | 29 | 423 | 1,756 | 1,904 | 1 | 2 | 51 | 161 | 226 | — | 4 | 59 | 256 | 299 |
| Connecticut | — | 0 | 407 | 407 | 430 | — | 0 | 51 | 51 | 67 | — | 0 | 53 | 53 | 43 |
| Maine [§] | 3 | 2 | 7 | 100 | 111 | 1 | 0 | 3 | 16 | 16 | — | 0 | 1 | 5 | 5 |
| Massachusetts | — | 21 | 48 | 945 | 953 | — | 1 | 8 | 62 | 86 | — | 4 | 16 | 179 | 207 |
| New Hampshire | — | 3 | 10 | 138 | 233 | — | 0 | 2 | 17 | 32 | — | 0 | 2 | 9 | 18 |
| Rhode Island [§] | — | 2 | 17 | 109 | 121 | — | 0 | 26 | 2 | 1 | — | 0 | 3 | 9 | 21 |
| Vermont [§] | — | 1 | 5 | 57 | 56 | — | 0 | 2 | 13 | 24 | — | 0 | 1 | 1 | 5 |
| Mid. Atlantic | 51 | 96 | 217 | 4,637 | 4,559 | 6 | 8 | 31 | 423 | 366 | 7 | 34 | 53 | 1,301 | 2,385 |
| New Jersey | — | 18 | 56 | 833 | 963 | — | 1 | 4 | 51 | 89 | — | 6 | 16 | 257 | 523 |
| New York (Upstate) | 32 | 24 | 78 | 1,193 | 1,079 | 5 | 3 | 15 | 164 | 123 | 2 | 4 | 19 | 182 | 180 |
| New York City | 2 | 25 | 56 | 1,112 | 1,048 | — | 1 | 7 | 62 | 53 | 2 | 6 | 13 | 244 | 376 |
| Pennsylvania | 17 | 29 | 82 | 1,499 | 1,469 | 1 | 3 | 13 | 146 | 101 | 3 | 16 | 35 | 618 | 1,306 |
| E.N. Central | 38 | 80 | 236 | 4,213 | 4,349 | 3 | 11 | 39 | 608 | 633 | 5 | 26 | 238 | 1,418 | 2,216 |
| Illinois | — | 27 | 113 | 1,455 | 1,240 | — | 1 | 8 | 90 | 155 | — | 9 | 228 | 701 | 518 |
| Indiana | — | 9 | 53 | 369 | 510 | — | 1 | 8 | 61 | 78 | — | 1 | 5 | 31 | 62 |
| Michigan | 3 | 15 | 45 | 753 | 823 | — | 2 | 16 | 144 | 119 | — | 4 | 9 | 194 | 192 |
| Ohio | 35 | 24 | 47 | 1,106 | 1,200 | 3 | 2 | 11 | 122 | 111 | 5 | 6 | 23 | 253 | 987 |
| Wisconsin | — | 10 | 44 | 530 | 576 | — | 3 | 17 | 191 | 170 | — | 4 | 21 | 239 | 457 |
| W.N. Central | 40 | 44 | 99 | 2,007 | 2,219 | 8 | 10 | 39 | 525 | 646 | 21 | 48 | 88 | 1,788 | 813 |
| Iowa | 1 | 8 | 35 | 431 | 345 | — | 2 | 16 | 139 | 140 | — | 1 | 5 | 47 | 47 |
| Kansas | 4 | 7 | 18 | 360 | 333 | 1 | 1 | 6 | 56 | 50 | 2 | 5 | 14 | 210 | 167 |
| Minnesota | — | 0 | 32 | 178 | 475 | — | 0 | 14 | 31 | 185 | — | 0 | 5 | 14 | 67 |
| Missouri | 13 | 12 | 44 | 673 | 542 | 4 | 3 | 27 | 209 | 120 | 11 | 42 | 75 | 1,472 | 497 |
| Nebraska [§] | 9 | 4 | 13 | 200 | 299 | 2 | 1 | 6 | 64 | 80 | 8 | 1 | 4 | 38 | 27 |
| North Dakota | 13 | 0 | 39 | 46 | 59 | — | 0 | 7 | — | 7 | — | 0 | 5 | — | 4 |
| South Dakota | — | 3 | 8 | 119 | 166 | 1 | 0 | 4 | 26 | 64 | — | 0 | 2 | 7 | 4 |
| S. Atlantic | 459 | 267 | 573 | 11,706 | 10,968 | 17 | 13 | 30 | 558 | 547 | 59 | 41 | 96 | 1,987 | 1,961 |
| Delaware | — | 3 | 11 | 147 | 115 | — | 0 | 2 | 5 | 12 | — | 1 | 10 | 37 | 104 |
| District of Columbia | — | 1 | 6 | 58 | 82 | — | 0 | 1 | 5 | 2 | — | 0 | 4 | 21 | 21 |
| Florida | 219 | 127 | 227 | 4,867 | 4,831 | 4 | 4 | 13 | 189 | 135 | 36 | 13 | 54 | 863 | 373 |
| Georgia | 50 | 40 | 129 | 2,069 | 1,950 | — | 1 | 15 | 86 | 56 | 9 | 13 | 38 | 597 | 531 |
| Maryland [§] | 12 | 15 | 52 | 826 | 659 | 5 | 1 | 6 | 75 | 77 | 3 | 3 | 8 | 107 | 329 |
| North Carolina | 106 | 29 | 145 | 1,449 | 1,493 | 7 | 1 | 7 | 58 | 95 | 8 | 2 | 18 | 158 | 336 |
| South Carolina [§] | 45 | 20 | 90 | 1,240 | 800 | — | 0 | 3 | 19 | 27 | — | 1 | 5 | 59 | 99 |
| Virginia [§] | 27 | 18 | 68 | 903 | 860 | 1 | 2 | 15 | 105 | 119 | 3 | 3 | 15 | 119 | 162 |
| West Virginia | — | 3 | 16 | 147 | 178 | — | 0 | 4 | 16 | 24 | — | 0 | 11 | 26 | 6 |
| E.S. Central | 22 | 52 | 174 | 2,862 | 2,543 | — | 4 | 11 | 191 | 179 | 3 | 11 | 40 | 528 | 674 |
| Alabama [§] | 4 | 14 | 45 | 657 | 731 | — | 0 | 4 | 36 | 40 | — | 3 | 10 | 115 | 125 |
| Kentucky | 6 | 8 | 31 | 458 | 381 | — | 1 | 6 | 50 | 61 | 2 | 4 | 28 | 192 | 176 |
| Mississippi | 1 | 14 | 68 | 926 | 779 | — | 0 | 2 | 13 | 6 | — | 1 | 4 | 38 | 42 |
| Tennessee [§] | 11 | 14 | 53 | 821 | 652 | — | 2 | 7 | 92 | 72 | 1 | 4 | 11 | 183 | 331 |
| W.S. Central | 125 | 114 | 547 | 4,719 | 4,565 | 7 | 5 | 68 | 241 | 250 | 41 | 50 | 251 | 1,968 | 2,384 |
| Arkansas [§] | 10 | 10 | 43 | 606 | 521 | 1 | 1 | 5 | 44 | 35 | — | 1 | 9 | 51 | 262 |
| Louisiana | 1 | 21 | 47 | 940 | 945 | — | 0 | 2 | 14 | 20 | — | 4 | 13 | 199 | 154 |
| Oklahoma | 17 | 10 | 46 | 531 | 522 | 1 | 0 | 27 | 21 | 29 | 2 | 6 | 96 | 227 | 234 |
| Texas [§] | 97 | 74 | 477 | 2,642 | 2,577 | 5 | 4 | 41 | 162 | 166 | 39 | 35 | 144 | 1,491 | 1,734 |
| Mountain | 14 | 49 | 105 | 2,174 | 2,496 | 6 | 9 | 33 | 463 | 495 | 3 | 15 | 32 | 623 | 981 |
| Arizona | 4 | 18 | 42 | 754 | 848 | — | 1 | 5 | 55 | 53 | — | 8 | 18 | 331 | 707 |
| Colorado | 9 | 10 | 23 | 463 | 529 | 2 | 2 | 18 | 154 | 150 | 3 | 2 | 6 | 98 | 82 |
| Idaho [§] | — | 3 | 9 | 127 | 151 | 4 | 1 | 7 | 77 | 82 | — | 0 | 3 | 22 | 7 |
| Montana [§] | 1 | 2 | 7 | 75 | 95 | — | 1 | 5 | 36 | 32 | — | 0 | 1 | 6 | 11 |
| Nevada [§] | — | 4 | 22 | 237 | 218 | — | 0 | 5 | 28 | 31 | — | 0 | 6 | 34 | 65 |
| New Mexico [§] | — | 5 | 15 | 233 | 310 | — | 1 | 5 | 33 | 33 | — | 2 | 9 | 98 | 91 |
| Utah | — | 5 | 17 | 248 | 267 | — | 1 | 7 | 66 | 101 | — | 0 | 4 | 34 | 16 |
| Wyoming [§] | — | 1 | 9 | 37 | 78 | — | 0 | 2 | 14 | 13 | — | 0 | 2 | — | 2 |
| Pacific | 102 | 115 | 299 | 5,085 | 5,153 | 28 | 9 | 46 | 486 | 428 | 13 | 21 | 64 | 900 | 1,004 |
| Alaska | — | 1 | 5 | 69 | 55 | — | 0 | 1 | 2 | 1 | — | 0 | 2 | 1 | 2 |
| California | 59 | 84 | 227 | 3,843 | 3,858 | 8 | 5 | 35 | 213 | 203 | 12 | 16 | 51 | 742 | 809 |
| Hawaii | 5 | 4 | 14 | 159 | 279 | — | 0 | 4 | 18 | 7 | 1 | 0 | 3 | 17 | 35 |
| Oregon | — | 8 | 48 | 427 | 357 | 2 | 1 | 7 | 78 | 67 | — | 1 | 4 | 47 | 43 |
| Washington | 38 | 14 | 61 | 587 | 604 | 18 | 3 | 18 | 175 | 150 | — | 1 | 22 | 93 | 115 |
| Territories | | | | | | | | | | | | | | | |
| American Samoa | — | 1 | 1 | 2 | — | — | 0 | 0 | — | — | — | 1 | 1 | 2 | 3 |
| C.N.M.I. | — | — | — | — | — | — | — | — | — | — | — | — | — | — | — |
| Guam | — | 0 | 1 | 4 | 11 | — | 0 | 0 | — | — | — | 0 | 3 | 1 | 10 |
| Puerto Rico | 1 | 10 | 39 | 423 | 462 | — | 0 | 0 | — | — | — | 0 | 1 | 4 | 11 |
| U.S. Virgin Islands | — | 0 | 0 | — | — | — | 0 | 0 | — | — | — | 0 | 0 | — | — |

C.N.M.I.: Commonwealth of Northern Mariana Islands.

U: Unavailable. —: No reported cases. N: Not reportable. NN: Not Nationally Notifiable. Cum: Cumulative year-to-date counts. Med: Median. Max: Maximum.

* Incidence data for reporting year 2010 is provisional.

† Includes *E. coli* O157:H7; Shiga toxin-positive, serogroup non-O157; and Shiga toxin-positive, not serogrouped.

§ Contains data reported through the National Electronic Disease Surveillance System (NEDSS).

TABLE II. (Continued) Provisional cases of selected notifiable diseases, United States, weeks ending October 16, 2010, and October 17, 2009 (41st week)*

| Reporting area | Spotted Fever Rickettsiosis (including RMSF) [†] | | | | | | | | | |
|-----------------------------|---|-------------------|----|----------|----------|--------------|-------------------|-----|----------|----------|
| | Confirmed | | | | | Probable | | | | |
| | Current week | Previous 52 weeks | | Cum 2010 | Cum 2009 | Current week | Previous 52 weeks | | Cum 2010 | Cum 2009 |
| | Med | Max | | | | Med | Max | | | |
| United States | 2 | 2 | 12 | 139 | 134 | 28 | 17 | 421 | 1,254 | 1,163 |
| New England | — | 0 | 0 | — | 2 | — | 0 | 1 | 3 | 9 |
| Connecticut | — | 0 | 0 | — | — | — | 0 | 0 | — | — |
| Maine [§] | — | 0 | 0 | — | — | — | 0 | 1 | 2 | 4 |
| Massachusetts | — | 0 | 0 | — | 1 | — | 0 | 1 | — | 5 |
| New Hampshire | — | 0 | 0 | — | — | — | 0 | 1 | 1 | — |
| Rhode Island [§] | — | 0 | 0 | — | — | — | 0 | 0 | — | — |
| Vermont [§] | — | 0 | 0 | — | 1 | — | 0 | 0 | — | — |
| Mid. Atlantic | — | 0 | 2 | 16 | 11 | 1 | 1 | 4 | 50 | 89 |
| New Jersey | — | 0 | 0 | — | 2 | — | 0 | 2 | — | 57 |
| New York (Upstate) | — | 0 | 1 | 2 | — | 1 | 0 | 3 | 15 | 13 |
| New York City | — | 0 | 1 | 1 | 1 | — | 0 | 4 | 23 | 6 |
| Pennsylvania | — | 0 | 2 | 13 | 8 | — | 0 | 1 | 12 | 13 |
| E.N. Central | — | 0 | 1 | 4 | 9 | 1 | 1 | 9 | 87 | 79 |
| Illinois | — | 0 | 1 | 2 | 1 | — | 0 | 5 | 28 | 47 |
| Indiana | — | 0 | 1 | 2 | 3 | 1 | 0 | 5 | 43 | 10 |
| Michigan | — | 0 | 0 | — | 4 | — | 0 | 1 | 1 | 1 |
| Ohio | — | 0 | 0 | — | — | — | 0 | 2 | 14 | 17 |
| Wisconsin | — | 0 | 0 | — | 1 | — | 0 | 1 | 1 | 4 |
| W.N. Central | — | 0 | 5 | 18 | 18 | 1 | 3 | 21 | 274 | 246 |
| Iowa | — | 0 | 0 | — | 1 | — | 0 | 1 | 4 | 4 |
| Kansas | — | 0 | 1 | 2 | 1 | — | 0 | 0 | — | — |
| Minnesota | — | 0 | 1 | — | 1 | — | 0 | 1 | — | 1 |
| Missouri | — | 0 | 5 | 14 | 7 | 1 | 3 | 20 | 266 | 237 |
| Nebraska [§] | — | 0 | 1 | 2 | 8 | — | 0 | 1 | 3 | 4 |
| North Dakota | — | 0 | 0 | — | — | — | 0 | 1 | 1 | — |
| South Dakota | — | 0 | 0 | — | — | — | 0 | 0 | — | — |
| S. Atlantic | — | 1 | 9 | 67 | 62 | 6 | 7 | 60 | 426 | 348 |
| Delaware | — | 0 | 1 | 1 | — | — | 0 | 3 | 17 | 16 |
| District of Columbia | — | 0 | 0 | — | — | — | 0 | 1 | — | — |
| Florida | — | 0 | 1 | 3 | — | 1 | 0 | 2 | 11 | 5 |
| Georgia | — | 0 | 6 | 45 | 48 | — | 0 | 0 | — | — |
| Maryland [§] | — | 0 | 1 | 2 | 3 | 1 | 0 | 4 | 42 | 34 |
| North Carolina | — | 0 | 3 | 11 | 7 | 3 | 1 | 48 | 228 | 229 |
| South Carolina [§] | — | 0 | 1 | 1 | 3 | — | 0 | 2 | 15 | 15 |
| Virginia [§] | — | 0 | 2 | 4 | 1 | 1 | 1 | 11 | 113 | 47 |
| West Virginia | — | 0 | 0 | — | — | — | 0 | 0 | — | 2 |
| E.S. Central | — | 0 | 3 | 20 | 9 | 1 | 4 | 29 | 329 | 243 |
| Alabama [§] | — | 0 | 1 | 4 | 3 | — | 1 | 8 | 68 | 59 |
| Kentucky | — | 0 | 2 | 6 | 1 | — | 0 | 0 | — | — |
| Mississippi | — | 0 | 0 | — | — | — | 0 | 2 | 9 | 9 |
| Tennessee [§] | — | 0 | 3 | 10 | 5 | 1 | 3 | 20 | 252 | 175 |
| W.S. Central | 2 | 0 | 3 | 6 | 8 | 18 | 1 | 408 | 78 | 125 |
| Arkansas [§] | 2 | 0 | 1 | 2 | — | 17 | 0 | 110 | 37 | 62 |
| Louisiana | — | 0 | 0 | — | — | — | 0 | 1 | 2 | 2 |
| Oklahoma | — | 0 | 3 | 3 | 6 | — | 0 | 287 | 22 | 43 |
| Texas [§] | — | 0 | 1 | 1 | 2 | 1 | 0 | 11 | 17 | 18 |
| Mountain | — | 0 | 1 | 2 | 14 | — | 0 | 2 | 7 | 24 |
| Arizona | — | 0 | 1 | — | 8 | — | 0 | 1 | 1 | 12 |
| Colorado | — | 0 | 0 | — | 1 | — | 0 | 1 | 1 | — |
| Idaho [§] | — | 0 | 0 | — | — | — | 0 | 1 | 2 | 1 |
| Montana [§] | — | 0 | 1 | 2 | 4 | — | 0 | 1 | 1 | 6 |
| Nevada [§] | — | 0 | 0 | — | — | — | 0 | 0 | — | 1 |
| New Mexico [§] | — | 0 | 0 | — | — | — | 0 | 1 | 1 | 1 |
| Utah | — | 0 | 0 | — | — | — | 0 | 1 | 1 | 1 |
| Wyoming [§] | — | 0 | 0 | — | 1 | — | 0 | 0 | — | 2 |
| Pacific | — | 0 | 2 | 6 | 1 | — | 0 | 0 | — | — |
| Alaska | N | 0 | 0 | N | N | N | 0 | 0 | N | N |
| California | — | 0 | 2 | 5 | 1 | — | 0 | 0 | — | — |
| Hawaii | N | 0 | 0 | N | N | N | 0 | 0 | N | N |
| Oregon | — | 0 | 1 | 1 | — | — | 0 | 0 | — | — |
| Washington | — | 0 | 0 | — | — | — | 0 | 0 | — | — |
| Territories | | | | | | | | | | |
| American Samoa | N | 0 | 0 | N | N | N | 0 | 0 | N | N |
| C.N.M.I. | — | — | — | — | — | — | — | — | — | — |
| Guam | N | 0 | 0 | N | N | N | 0 | 0 | N | N |
| Puerto Rico | N | 0 | 0 | N | N | N | 0 | 0 | N | N |
| U.S. Virgin Islands | — | 0 | 0 | — | — | — | 0 | 0 | — | — |

C.N.M.I.: Commonwealth of Northern Mariana Islands.

U: Unavailable. —: No reported cases. N: Not reportable. NN: Not Nationally Notifiable. Cum: Cumulative year-to-date counts. Med: Median. Max: Maximum.

* Incidence data for reporting year 2010 is provisional.

[†] Illnesses with similar clinical presentation that result from Spotted fever group rickettsia infections are reported as Spotted fever rickettsioses. Rocky Mountain spotted fever (RMSF) caused by *Rickettsia rickettsii*, is the most common and well-known spotted fever.[§] Contains data reported through the National Electronic Disease Surveillance System (NEDSS).

MMWR Morbidity and Mortality Weekly Report

TABLE II. (Continued) Provisional cases of selected notifiable diseases, United States, weeks ending October 16, 2010, and October 17, 2009 (41st week)*

| Reporting area | <i>Streptococcus pneumoniae</i> , [†] invasive disease | | | | | | | | | | Syphilis, primary and secondary | | | | |
|-----------------------------|---|-------------------|-----|----------|----------|--------------|-------------------|-----|----------|----------|---------------------------------|-------------------|-----|----------|----------|
| | All ages | | | | | Age <5 | | | | | | | | | |
| | Current week | Previous 52 weeks | | Cum 2010 | Cum 2009 | Current week | Previous 52 weeks | | Cum 2010 | Cum 2009 | Current week | Previous 52 weeks | | Cum 2010 | Cum 2009 |
| | | Med | Max | | | | Med | Max | | | | Med | Max | | |
| United States | 123 | 199 | 495 | 11,071 | 2,339 | 15 | 51 | 156 | 1,722 | 1,831 | 98 | 240 | 413 | 9,495 | 11,173 |
| New England | 1 | 8 | 99 | 599 | 44 | — | 1 | 24 | 78 | 60 | 2 | 8 | 22 | 352 | 250 |
| Connecticut | — | 0 | 92 | 265 | — | — | 0 | 22 | 25 | — | — | 1 | 10 | 69 | 45 |
| Maine [§] | 1 | 2 | 6 | 95 | 14 | — | 0 | 1 | 8 | 7 | — | 0 | 3 | 23 | 2 |
| Massachusetts | — | 0 | 5 | 54 | 3 | — | 1 | 4 | 37 | 37 | — | 5 | 15 | 211 | 180 |
| New Hampshire | — | 0 | 7 | 59 | — | — | 0 | 1 | 3 | 10 | — | 0 | 2 | 17 | 13 |
| Rhode Island [§] | — | 0 | 35 | 64 | 15 | — | 0 | 2 | 2 | 2 | 2 | 0 | 4 | 30 | 10 |
| Vermont [§] | — | 1 | 6 | 62 | 12 | — | 0 | 1 | 3 | 4 | — | 0 | 2 | 2 | — |
| Mid. Atlantic | 7 | 20 | 54 | 970 | 152 | 4 | 7 | 48 | 271 | 229 | 25 | 33 | 45 | 1,351 | 1,419 |
| New Jersey | — | 1 | 8 | 83 | — | — | 1 | 5 | 43 | 45 | 2 | 4 | 12 | 187 | 179 |
| New York (Upstate) | 1 | 3 | 12 | 128 | 61 | 1 | 3 | 19 | 91 | 99 | 1 | 2 | 11 | 104 | 95 |
| New York City | 4 | 6 | 25 | 379 | 10 | 3 | 1 | 24 | 94 | 71 | 17 | 18 | 31 | 770 | 873 |
| Pennsylvania | 2 | 7 | 22 | 380 | 81 | — | 0 | 5 | 43 | 14 | 5 | 7 | 16 | 290 | 272 |
| E.N. Central | 32 | 34 | 98 | 2,242 | 525 | 4 | 8 | 18 | 285 | 305 | 1 | 27 | 46 | 1,048 | 1,229 |
| Illinois | — | 1 | 7 | 76 | — | — | 2 | 5 | 69 | 50 | — | 9 | 23 | 334 | 597 |
| Indiana | — | 7 | 24 | 439 | 202 | — | 1 | 6 | 38 | 62 | — | 3 | 13 | 139 | 125 |
| Michigan | 4 | 10 | 27 | 533 | 24 | 1 | 2 | 6 | 66 | 57 | — | 4 | 12 | 170 | 192 |
| Ohio | 24 | 15 | 49 | 919 | 299 | 3 | 2 | 6 | 79 | 102 | 1 | 9 | 18 | 370 | 276 |
| Wisconsin | 4 | 5 | 22 | 275 | — | — | 1 | 4 | 33 | 34 | — | 1 | 3 | 35 | 39 |
| W.N. Central | 12 | 8 | 182 | 626 | 152 | 1 | 2 | 12 | 112 | 149 | 3 | 5 | 19 | 254 | 253 |
| Iowa | — | 0 | 0 | — | — | — | 0 | 0 | — | — | — | 0 | 2 | 10 | 21 |
| Kansas | — | 1 | 7 | 77 | 50 | — | 0 | 2 | 13 | 16 | — | 0 | 3 | 16 | 27 |
| Minnesota | — | 0 | 179 | 287 | 38 | — | 0 | 10 | 44 | 70 | — | 1 | 9 | 97 | 60 |
| Missouri | 1 | 2 | 10 | 91 | 53 | 1 | 1 | 3 | 33 | 40 | 3 | 3 | 10 | 122 | 137 |
| Nebraska [§] | 5 | 1 | 7 | 106 | 2 | — | 0 | 2 | 13 | 10 | — | 0 | 2 | 7 | 5 |
| North Dakota | 6 | 0 | 11 | 50 | 7 | — | 0 | 1 | 2 | 4 | — | 0 | 1 | — | 3 |
| South Dakota | — | 0 | 3 | 15 | 2 | — | 0 | 2 | 7 | 9 | — | 0 | 1 | 2 | — |
| S. Atlantic | 27 | 49 | 144 | 2,600 | 1,056 | 3 | 12 | 28 | 432 | 437 | 27 | 54 | 218 | 2,224 | 2,677 |
| Delaware | 1 | 0 | 3 | 29 | 18 | — | 0 | 0 | — | 3 | — | 0 | 2 | 4 | 25 |
| District of Columbia | — | 0 | 4 | 21 | 18 | — | 0 | 2 | 7 | 4 | 12 | 2 | 8 | 118 | 147 |
| Florida | 14 | 22 | 89 | 1,172 | 615 | 2 | 3 | 18 | 158 | 155 | 2 | 20 | 44 | 830 | 836 |
| Georgia | 2 | 10 | 28 | 427 | 314 | 1 | 3 | 12 | 120 | 118 | 1 | 9 | 167 | 394 | 624 |
| Maryland [§] | 2 | 7 | 31 | 409 | 4 | — | 1 | 6 | 44 | 65 | 5 | 6 | 12 | 240 | 239 |
| North Carolina | — | 0 | 0 | — | — | — | 0 | 0 | — | — | — | 7 | 31 | 286 | 448 |
| South Carolina [§] | 8 | 6 | 25 | 403 | — | — | 1 | 4 | 42 | 38 | 7 | 2 | 7 | 117 | 98 |
| Virginia [§] | — | 0 | 4 | 46 | — | — | 1 | 4 | 44 | 36 | — | 4 | 22 | 231 | 256 |
| West Virginia | — | 1 | 21 | 93 | 87 | — | 0 | 4 | 17 | 18 | — | 0 | 2 | 4 | 4 |
| E.S. Central | 8 | 20 | 50 | 980 | 214 | 1 | 2 | 8 | 98 | 116 | 24 | 18 | 39 | 716 | 924 |
| Alabama [§] | — | 0 | 0 | — | — | — | 0 | 0 | — | — | 2 | 5 | 12 | 190 | 354 |
| Kentucky | — | 3 | 16 | 152 | 58 | — | 0 | 2 | 13 | 7 | 5 | 2 | 13 | 104 | 50 |
| Mississippi | — | 1 | 6 | 46 | 41 | — | 0 | 2 | 10 | 21 | 16 | 4 | 17 | 177 | 179 |
| Tennessee [§] | 8 | 13 | 44 | 782 | 115 | 1 | 2 | 7 | 75 | 88 | 1 | 5 | 17 | 245 | 341 |
| W.S. Central | 15 | 18 | 91 | 1,419 | 100 | 1 | 5 | 41 | 229 | 276 | 7 | 37 | 58 | 1,459 | 2,278 |
| Arkansas [§] | — | 2 | 9 | 130 | 46 | — | 0 | 3 | 14 | 35 | 7 | 3 | 13 | 133 | 203 |
| Louisiana | — | 1 | 8 | 67 | 54 | — | 0 | 3 | 20 | 22 | — | 7 | 24 | 317 | 645 |
| Oklahoma | — | 1 | 5 | 40 | — | — | 1 | 5 | 40 | 50 | — | 2 | 6 | 64 | 74 |
| Texas [§] | 15 | 16 | 83 | 1,182 | — | 1 | 3 | 34 | 155 | 169 | — | 25 | 42 | 945 | 1,356 |
| Mountain | 19 | 22 | 82 | 1,397 | 93 | 1 | 5 | 12 | 188 | 232 | 1 | 9 | 23 | 389 | 430 |
| Arizona | 6 | 8 | 51 | 635 | — | 1 | 2 | 7 | 81 | 101 | — | 3 | 7 | 124 | 194 |
| Colorado | 12 | 7 | 20 | 423 | — | — | 1 | 4 | 54 | 37 | — | 2 | 7 | 105 | 78 |
| Idaho [§] | — | 0 | 2 | 11 | — | — | 0 | 2 | 5 | 7 | — | 0 | 1 | 2 | 3 |
| Montana [§] | — | 0 | 2 | 16 | — | — | 0 | 1 | 1 | — | — | 0 | 1 | 1 | 2 |
| Nevada [§] | — | 1 | 4 | 60 | 35 | — | 0 | 1 | 5 | 7 | — | 1 | 9 | 86 | 81 |
| New Mexico [§] | — | 2 | 9 | 119 | — | — | 0 | 4 | 14 | 26 | 1 | 1 | 4 | 38 | 45 |
| Utah | — | 2 | 9 | 123 | 49 | — | 1 | 4 | 25 | 53 | — | 1 | 4 | 33 | 24 |
| Wyoming [§] | 1 | 0 | 1 | 10 | 9 | — | 0 | 1 | 3 | 1 | — | 0 | 0 | — | 3 |
| Pacific | 2 | 5 | 14 | 238 | 3 | — | 0 | 7 | 29 | 27 | 8 | 42 | 60 | 1,702 | 1,713 |
| Alaska | — | 1 | 9 | 92 | — | — | 0 | 5 | 18 | 18 | — | 0 | 1 | 1 | — |
| California | 2 | 3 | 12 | 146 | — | — | 0 | 2 | 11 | — | 7 | 37 | 55 | 1,465 | 1,523 |
| Hawaii | — | 0 | 0 | — | 3 | — | 0 | 1 | — | 9 | — | 0 | 3 | 27 | 29 |
| Oregon | — | 0 | 0 | — | — | — | 0 | 0 | — | — | 1 | 1 | 6 | 56 | 42 |
| Washington | — | 0 | 0 | — | — | — | 0 | 0 | — | — | — | 3 | 10 | 153 | 119 |
| Territories | | | | | | | | | | | | | | | |
| American Samoa | — | 0 | 0 | — | — | — | 0 | 0 | — | — | — | 0 | 0 | — | — |
| C.N.M.I. | — | — | — | — | — | — | — | — | — | — | — | — | — | — | — |
| Guam | — | 0 | 0 | — | — | — | 0 | 0 | — | — | — | 0 | 0 | — | — |
| Puerto Rico | — | 0 | 0 | — | — | — | 0 | 0 | — | — | 1 | 4 | 15 | 182 | 174 |
| U.S. Virgin Islands | — | 0 | 0 | — | — | — | 0 | 0 | — | — | — | 0 | 0 | — | — |

C.N.M.I.: Commonwealth of Northern Mariana Islands.

U: Unavailable. —: No reported cases. N: Not reportable. NN: Not Nationally Notifiable. Cum: Cumulative year-to-date counts. Med: Median. Max: Maximum.

* Incidence data for reporting year 2010 is provisional.

[†] Includes drug resistant and susceptible cases of invasive *Streptococcus pneumoniae* disease among children <5 years and among all ages. Case definition: Isolation of *S. pneumoniae* from a normally sterile body site (e.g., blood or cerebrospinal fluid).

[§] Contains data reported through the National Electronic Disease Surveillance System (NEDSS).

MMWR Morbidity and Mortality Weekly Report

TABLE II. (Continued) Provisional cases of selected notifiable diseases, United States, weeks ending October 16, 2010, and October 17, 2009 (41st week)*

| Reporting area | Varicella (chickenpox) [§] | | | | | West Nile virus disease [†] | | | | | | | | | |
|-----------------------------|-------------------------------------|-------------------|-----|----------|----------|--------------------------------------|-----|-----|----------|----------|-------------------------------|-----|-----|----------|----------|
| | Current week | Previous 52 weeks | | Cum 2010 | Cum 2009 | Neuroinvasive | | | | | Nonneuroinvasive [¶] | | | | |
| | | Med | Max | | | Current week | Med | Max | Cum 2010 | Cum 2009 | Current week | Med | Max | Cum 2010 | Cum 2009 |
| United States | 127 | 312 | 547 | 11,125 | 16,974 | — | 0 | 68 | 479 | 381 | — | 1 | 48 | 310 | 333 |
| New England | 1 | 15 | 36 | 562 | 884 | — | 0 | 3 | 12 | — | — | 0 | 1 | 2 | — |
| Connecticut | — | 6 | 20 | 253 | 414 | — | 0 | 2 | 6 | — | — | 0 | 1 | 1 | — |
| Maine [§] | — | 3 | 15 | 157 | 181 | — | 0 | 0 | — | — | — | 0 | 0 | — | — |
| Massachusetts | — | 0 | 0 | — | 4 | — | 0 | 2 | 5 | — | — | 0 | 1 | 1 | — |
| New Hampshire | 1 | 2 | 8 | 106 | 171 | — | 0 | 1 | 1 | — | — | 0 | 0 | — | — |
| Rhode Island [§] | — | 1 | 12 | 27 | 31 | — | 0 | 0 | — | — | — | 0 | 0 | — | — |
| Vermont [§] | — | 0 | 10 | 19 | 83 | — | 0 | 0 | — | — | — | 0 | 0 | — | — |
| Mid. Atlantic | 13 | 32 | 62 | 1,245 | 1,702 | — | 0 | 19 | 119 | 9 | — | 0 | 13 | 56 | 1 |
| New Jersey | — | 9 | 30 | 427 | 360 | — | 0 | 3 | 13 | 3 | — | 0 | 6 | 11 | — |
| New York (Upstate) | N | 0 | 0 | N | N | — | 0 | 9 | 55 | 3 | — | 0 | 7 | 29 | 1 |
| New York City | — | 0 | 0 | — | — | — | 0 | 7 | 32 | 3 | — | 0 | 4 | 8 | — |
| Pennsylvania | 13 | 21 | 39 | 818 | 1,342 | — | 0 | 3 | 19 | — | — | 0 | 3 | 8 | — |
| E.N. Central | 47 | 103 | 176 | 3,720 | 5,271 | — | 0 | 13 | 60 | 9 | — | 0 | 6 | 24 | 4 |
| Illinois | 5 | 24 | 49 | 969 | 1,302 | — | 0 | 10 | 33 | 5 | — | 0 | 4 | 11 | — |
| Indiana [§] | — | 5 | 35 | 331 | 384 | — | 0 | 1 | 2 | 2 | — | 0 | 2 | 6 | 2 |
| Michigan | 8 | 33 | 62 | 1,102 | 1,508 | — | 0 | 6 | 23 | 1 | — | 0 | 1 | 4 | — |
| Ohio | 32 | 28 | 56 | 1,042 | 1,586 | — | 0 | 1 | 2 | — | — | 0 | 1 | 1 | 2 |
| Wisconsin | 2 | 7 | 22 | 276 | 491 | — | 0 | 0 | — | 1 | — | 0 | 1 | 2 | — |
| W.N. Central | 9 | 15 | 40 | 619 | 1,085 | — | 0 | 7 | 25 | 26 | — | 0 | 8 | 60 | 74 |
| Iowa | N | 0 | 0 | N | N | — | 0 | 1 | 2 | — | — | 0 | 2 | 4 | 5 |
| Kansas [§] | — | 6 | 22 | 225 | 454 | — | 0 | 1 | 1 | 4 | — | 0 | 2 | 5 | 9 |
| Minnesota | — | 0 | 0 | — | — | — | 0 | 1 | 3 | 1 | — | 0 | 1 | 2 | 3 |
| Missouri | 5 | 7 | 23 | 328 | 524 | — | 0 | 1 | 3 | 4 | — | 0 | 0 | — | 1 |
| Nebraska [§] | N | 0 | 0 | N | N | — | 0 | 3 | 10 | 11 | — | 0 | 7 | 27 | 40 |
| North Dakota | — | 0 | 26 | 31 | 57 | — | 0 | 2 | 2 | — | — | 0 | 1 | 6 | 1 |
| South Dakota | 4 | 0 | 7 | 35 | 50 | — | 0 | 2 | 4 | 6 | — | 0 | 3 | 16 | 15 |
| S. Atlantic | 29 | 37 | 98 | 1,733 | 2,165 | — | 0 | 4 | 22 | 16 | — | 0 | 4 | 12 | 2 |
| Delaware [§] | — | 0 | 3 | 15 | 11 | — | 0 | 0 | — | — | — | 0 | 0 | — | — |
| District of Columbia | — | 0 | 4 | 17 | 27 | — | 0 | 0 | — | 2 | — | 0 | 0 | — | — |
| Florida [§] | 7 | 15 | 57 | 846 | 1,009 | — | 0 | 2 | 6 | 2 | — | 0 | 1 | 1 | 1 |
| Georgia | N | 0 | 0 | N | N | — | 0 | 1 | 4 | 4 | — | 0 | 3 | 7 | — |
| Maryland [§] | N | 0 | 0 | N | N | — | 0 | 3 | 10 | — | — | 0 | 2 | 4 | 1 |
| North Carolina | N | 0 | 0 | N | N | — | 0 | 0 | — | — | — | 0 | 0 | — | — |
| South Carolina [§] | — | 0 | 35 | 75 | 93 | — | 0 | 0 | — | 3 | — | 0 | 0 | — | — |
| Virginia [§] | 12 | 11 | 34 | 412 | 617 | — | 0 | 1 | 2 | 5 | — | 0 | 0 | — | — |
| West Virginia | 10 | 8 | 26 | 368 | 408 | — | 0 | 0 | — | — | — | 0 | 0 | — | — |
| E.S. Central | — | 6 | 22 | 233 | 467 | — | 0 | 1 | 7 | 36 | — | 0 | 3 | 9 | 27 |
| Alabama [§] | — | 5 | 22 | 226 | 462 | — | 0 | 1 | 1 | — | — | 0 | 1 | 2 | — |
| Kentucky | N | 0 | 0 | N | N | — | 0 | 1 | 2 | 3 | — | 0 | 1 | 1 | — |
| Mississippi | — | 0 | 2 | 7 | 5 | — | 0 | 1 | 2 | 29 | — | 0 | 2 | 4 | 22 |
| Tennessee [§] | N | 0 | 0 | N | N | — | 0 | 1 | 2 | 4 | — | 0 | 2 | 2 | 5 |
| W.S. Central | 23 | 50 | 285 | 2,168 | 4,174 | — | 0 | 14 | 73 | 116 | — | 0 | 3 | 13 | 35 |
| Arkansas [§] | — | 3 | 32 | 122 | 420 | — | 0 | 3 | 6 | 6 | — | 0 | 0 | — | — |
| Louisiana | — | 1 | 5 | 40 | 118 | — | 0 | 3 | 14 | 10 | — | 0 | 1 | 6 | 11 |
| Oklahoma | N | 0 | 0 | N | N | — | 0 | 0 | — | 8 | — | 0 | 0 | — | 2 |
| Texas [§] | 23 | 41 | 272 | 2,006 | 3,636 | — | 0 | 14 | 53 | 92 | — | 0 | 2 | 7 | 22 |
| Mountain | 5 | 20 | 36 | 801 | 1,134 | — | 0 | 13 | 119 | 77 | — | 0 | 15 | 111 | 123 |
| Arizona | — | 0 | 0 | — | — | — | 0 | 10 | 80 | 12 | — | 0 | 9 | 52 | 8 |
| Colorado [§] | 5 | 8 | 16 | 322 | 437 | — | 0 | 5 | 24 | 36 | — | 0 | 11 | 49 | 67 |
| Idaho [§] | N | 0 | 0 | N | N | — | 0 | 0 | — | 9 | — | 0 | 1 | 1 | 29 |
| Montana [§] | — | 3 | 17 | 161 | 129 | — | 0 | 0 | — | 2 | — | 0 | 0 | — | 3 |
| Nevada [§] | N | 0 | 0 | N | N | — | 0 | 0 | — | 7 | — | 0 | 1 | 2 | 5 |
| New Mexico [§] | — | 2 | 8 | 87 | 100 | — | 0 | 4 | 13 | 6 | — | 0 | 2 | 3 | 2 |
| Utah | — | 5 | 17 | 218 | 468 | — | 0 | 0 | — | 1 | — | 0 | 0 | — | 1 |
| Wyoming [§] | — | 0 | 3 | 13 | — | — | 0 | 1 | 2 | 4 | — | 0 | 1 | 4 | 8 |
| Pacific | — | 1 | 5 | 44 | 92 | — | 0 | 7 | 42 | 92 | — | 0 | 4 | 23 | 67 |
| Alaska | — | 0 | 5 | 33 | 54 | — | 0 | 0 | — | — | — | 0 | 0 | — | — |
| California | — | 0 | 0 | — | — | — | 0 | 7 | 42 | 65 | — | 0 | 4 | 23 | 45 |
| Hawaii | — | 0 | 2 | 11 | 38 | — | 0 | 0 | — | — | — | 0 | 0 | — | — |
| Oregon | N | 0 | 0 | N | N | — | 0 | 0 | — | 1 | — | 0 | 0 | — | 10 |
| Washington | N | 0 | 0 | N | N | — | 0 | 0 | — | 26 | — | 0 | 0 | — | 12 |
| Territories | | | | | | | | | | | | | | | |
| American Samoa | N | 0 | 0 | N | N | — | 0 | 0 | — | — | — | 0 | 0 | — | — |
| C.N.M.I. | — | — | — | — | — | — | — | — | — | — | — | — | — | — | — |
| Guam | — | 0 | 3 | 14 | 20 | — | 0 | 0 | — | — | — | 0 | 0 | — | — |
| Puerto Rico | 9 | 9 | 30 | 486 | 465 | — | 0 | 0 | — | — | — | 0 | 0 | — | — |
| U.S. Virgin Islands | — | 0 | 0 | — | — | — | 0 | 0 | — | — | — | 0 | 0 | — | — |

C.N.M.I.: Commonwealth of Northern Mariana Islands.

U: Unavailable. —: No reported cases. N: Not reportable. NN: Not Nationally Notifiable. Cum: Cumulative year-to-date counts. Med: Median. Max: Maximum.

* Incidence data for reporting year 2010 is provisional. Data for HIV/AIDS, AIDS, and TB, when available, are displayed in Table IV, which appears quarterly.

† Updated weekly from reports to the Division of Vector-Borne Infectious Diseases, National Center for Zoonotic, Vector-Borne, and Enteric Diseases (ArboNET Surveillance). Data for California serogroup, eastern equine, Powassan, St. Louis, and western equine diseases are available in Table I.

§ Contains data reported through the National Electronic Disease Surveillance System (NEDSS).

¶ Not reportable in all states. Data from states where the condition is not reportable are excluded from this table, except starting in 2007 for the domestic arboviral diseases and influenza-associated pediatric mortality, and in 2003 for SARS-CoV. Reporting exceptions are available at <http://www.cdc.gov/ncphi/diss/nndss/phs/infdis.htm>.

MMWR Morbidity and Mortality Weekly Report

TABLE III. Deaths in 122 U.S. cities,* week ending October 16, 2010 (41st week)

| Reporting area | All causes, by age (years) | | | | | | P&† Total | Reporting area | All causes, by age (years) | | | | | | P&† Total |
|-----------------------------|----------------------------|-------|-------|-------|------|----|--------------|--------------------------|----------------------------|--------------|--------------|------------|------------|------------|--------------|
| | All Ages | ≥65 | 45-64 | 25-44 | 1-24 | <1 | | | All Ages | ≥65 | 45-64 | 25-44 | 1-24 | <1 | |
| New England | 512 | 364 | 104 | 26 | 7 | 11 | 34 | S. Atlantic | 1,152 | 728 | 305 | 72 | 29 | 17 | 80 |
| Boston, MA | 140 | 93 | 33 | 8 | 2 | 4 | 7 | Atlanta, GA | 123 | 69 | 39 | 11 | 3 | 1 | 8 |
| Bridgeport, CT | 27 | 22 | 4 | 1 | — | — | 2 | Baltimore, MD | 144 | 82 | 45 | 14 | 2 | 1 | 10 |
| Cambridge, MA | 18 | 14 | 4 | — | — | — | 3 | Charlotte, NC | 137 | 102 | 28 | 7 | — | — | 12 |
| Fall River, MA | 24 | 21 | 3 | — | — | — | 1 | Jacksonville, FL | 153 | 104 | 38 | 6 | 3 | 2 | 10 |
| Hartford, CT | 40 | 28 | 7 | 4 | — | 1 | 4 | Miami, FL | 78 | 48 | 20 | 5 | 3 | 2 | 11 |
| Lowell, MA | 18 | 13 | 1 | 1 | 1 | 2 | 1 | Norfolk, VA | 59 | 34 | 15 | 4 | 2 | 4 | 2 |
| Lynn, MA | 9 | 5 | 2 | 2 | — | — | — | Richmond, VA | 67 | 39 | 22 | 2 | 4 | — | 8 |
| New Bedford, MA | 12 | 11 | 1 | — | — | — | 2 | Savannah, GA | 54 | 42 | 7 | 2 | 1 | 2 | — |
| New Haven, CT | 35 | 23 | 8 | 3 | — | 1 | 2 | St. Petersburg, FL | 55 | 37 | 12 | 2 | 2 | 2 | 1 |
| Providence, RI | 70 | 53 | 13 | 2 | 1 | 1 | 4 | Tampa, FL | 165 | 107 | 45 | 8 | 2 | 3 | 12 |
| Somerville, MA | 5 | 3 | 1 | 1 | — | — | — | Washington, D.C. | 111 | 61 | 33 | 9 | 7 | — | 5 |
| Springfield, MA | 30 | 19 | 11 | — | — | — | — | Wilmington, DE | 6 | 3 | 1 | 2 | — | — | 1 |
| Waterbury, CT | 24 | 15 | 7 | — | 2 | — | 5 | E.S. Central | 710 | 445 | 178 | 48 | 24 | 15 | 63 |
| Worcester, MA | 60 | 44 | 9 | 4 | 1 | 2 | 3 | Birmingham, AL | 145 | 91 | 31 | 11 | 7 | 5 | 12 |
| Mid. Atlantic | 1,693 | 1,197 | 345 | 95 | 35 | 21 | 84 | Chattanooga, TN | 74 | 61 | 8 | 3 | 2 | — | 4 |
| Albany, NY | 43 | 34 | 7 | 2 | — | — | 1 | Knoxville, TN | 69 | 47 | 14 | 6 | 1 | 1 | 5 |
| Allentown, PA | 31 | 25 | 3 | 2 | — | 1 | 1 | Lexington, KY | 80 | 47 | 25 | 5 | 3 | — | 3 |
| Buffalo, NY | 81 | 50 | 24 | 4 | 2 | 1 | 4 | Memphis, TN | 136 | 82 | 39 | 9 | 3 | 3 | 18 |
| Camden, NJ | 29 | 17 | 10 | 2 | — | — | 2 | Mobile, AL | 48 | 27 | 15 | 3 | 1 | 2 | 3 |
| Elizabeth, NJ | 14 | 8 | 5 | — | 1 | — | 2 | Montgomery, AL | 27 | 18 | 8 | — | — | 1 | 5 |
| Erie, PA | 46 | 34 | 9 | 3 | — | — | 2 | Nashville, TN | 131 | 72 | 38 | 11 | 7 | 3 | 13 |
| Jersey City, NJ | 30 | 19 | 6 | 5 | — | — | 1 | W.S. Central | 1,226 | 772 | 299 | 102 | 31 | 22 | 72 |
| New York City, NY | 942 | 680 | 183 | 50 | 19 | 10 | 36 | Austin, TX | 53 | 32 | 18 | 3 | — | — | 2 |
| Newark, NJ | U | U | U | U | U | U | U | Baton Rouge, LA | U | U | U | U | U | U | U |
| Paterson, NJ | 17 | 8 | 8 | 1 | — | — | 3 | Corpus Christi, TX | 56 | 34 | 17 | 3 | 2 | — | 4 |
| Philadelphia, PA | 146 | 85 | 35 | 13 | 5 | 8 | 8 | Dallas, TX | 183 | 119 | 44 | 10 | 7 | 3 | 14 |
| Pittsburgh, PA [§] | 40 | 27 | 10 | 1 | 2 | — | 4 | El Paso, TX | 73 | 55 | 9 | 4 | 4 | 1 | 6 |
| Reading, PA | 26 | 23 | 2 | — | 1 | — | 2 | Fort Worth, TX | U | U | U | U | U | U | U |
| Rochester, NY | 72 | 52 | 15 | — | 4 | 1 | 7 | Houston, TX | 430 | 239 | 107 | 67 | 12 | 5 | 26 |
| Schenectady, NY | 24 | 18 | 4 | 2 | — | — | 2 | Little Rock, AR | 59 | 40 | 16 | 1 | 1 | 1 | — |
| Scranton, PA | 21 | 15 | 5 | — | 1 | — | 2 | New Orleans, LA | U | U | U | U | U | U | U |
| Syracuse, NY | 71 | 59 | 10 | 2 | — | — | 4 | San Antonio, TX | 208 | 135 | 48 | 11 | 3 | 11 | 11 |
| Trenton, NJ | 22 | 15 | 4 | 3 | — | — | — | Shreveport, LA | 50 | 39 | 10 | — | 1 | — | 3 |
| Utica, NY | 21 | 17 | 1 | 3 | — | — | 1 | Tulsa, OK | 114 | 79 | 30 | 3 | 1 | 1 | 6 |
| Yonkers, NY | 17 | 11 | 4 | 2 | — | — | 2 | Mountain | 1,059 | 685 | 252 | 64 | 35 | 21 | 60 |
| E.N. Central | 1,834 | 1,217 | 467 | 93 | 23 | 34 | 117 | Albuquerque, NM | 109 | 75 | 23 | 5 | 4 | 2 | 9 |
| Akron, OH | 44 | 29 | 8 | 4 | 1 | 2 | 6 | Boise, ID | 47 | 33 | 10 | 3 | 1 | — | 3 |
| Canton, OH | 29 | 19 | 7 | 2 | 1 | — | 7 | Colorado Springs, CO | 60 | 39 | 15 | 3 | 3 | — | 1 |
| Chicago, IL | 238 | 131 | 81 | 21 | 5 | — | 23 | Denver, CO | 78 | 43 | 23 | 5 | 2 | 5 | 3 |
| Cincinnati, OH | 87 | 57 | 17 | 9 | — | 4 | 9 | Las Vegas, NV | 308 | 180 | 94 | 15 | 12 | 7 | 17 |
| Cleveland, OH | 233 | 167 | 58 | 4 | 1 | 3 | 9 | Ogden, UT | 23 | 17 | 4 | 2 | — | — | 2 |
| Columbus, OH | 176 | 129 | 37 | 3 | 1 | 6 | 9 | Phoenix, AZ | 176 | 113 | 36 | 13 | 8 | 4 | 10 |
| Dayton, OH | 143 | 103 | 31 | 7 | 2 | — | 9 | Pueblo, CO | 33 | 29 | 3 | 1 | — | — | 1 |
| Detroit, MI | 117 | 69 | 36 | 6 | 3 | 3 | 2 | Salt Lake City, UT | 110 | 75 | 22 | 10 | 1 | 2 | 9 |
| Evansville, IN | 44 | 32 | 11 | 1 | — | — | 2 | Tucson, AZ | 115 | 81 | 22 | 7 | 4 | 1 | 5 |
| Fort Wayne, IN | 55 | 37 | 15 | 2 | — | 1 | 2 | Pacific | 1,505 | 1,019 | 354 | 73 | 30 | 28 | 116 |
| Gary, IN | 18 | 5 | 9 | 4 | — | — | — | Berkeley, CA | 11 | 8 | 2 | — | 1 | — | 1 |
| Grand Rapids, MI | 55 | 41 | 13 | — | — | 1 | 2 | Fresno, CA | 107 | 67 | 26 | 6 | 4 | 4 | 6 |
| Indianapolis, IN | 191 | 116 | 55 | 11 | 3 | 6 | 7 | Glendale, CA | 32 | 27 | 3 | — | — | 2 | 5 |
| Lansing, MI | 47 | 34 | 11 | — | 1 | 1 | 4 | Honolulu, HI | 82 | 59 | 14 | 6 | — | 3 | 7 |
| Milwaukee, WI | 80 | 51 | 20 | 7 | — | 2 | 6 | Long Beach, CA | 67 | 39 | 19 | 3 | 3 | 3 | 8 |
| Peoria, IL | 42 | 28 | 9 | 2 | 1 | 2 | 7 | Los Angeles, CA | 221 | 134 | 60 | 17 | 6 | 4 | 19 |
| Rockford, IL | 61 | 39 | 15 | 4 | 2 | 1 | 3 | Pasadena, CA | 18 | 15 | 1 | 2 | — | — | 2 |
| South Bend, IN | 36 | 29 | 7 | — | — | — | 3 | Portland, OR | 115 | 74 | 32 | 8 | 1 | — | 7 |
| Toledo, OH | 77 | 53 | 15 | 5 | 2 | 2 | 2 | Sacramento, CA | 141 | 100 | 32 | 6 | — | 2 | 12 |
| Youngstown, OH | 61 | 48 | 12 | 1 | — | — | 5 | San Diego, CA | 147 | 97 | 37 | 9 | 3 | 1 | 6 |
| W.N. Central | 562 | 386 | 128 | 34 | 10 | 4 | 37 | San Francisco, CA | 98 | 72 | 24 | — | 1 | 1 | 10 |
| Des Moines, IA | 78 | 54 | 20 | 3 | 1 | — | 4 | San Jose, CA | 159 | 125 | 26 | 3 | 2 | 3 | 15 |
| Duluth, MN | 31 | 24 | 7 | — | — | — | 1 | Santa Cruz, CA | 23 | 17 | 5 | — | 1 | — | 1 |
| Kansas City, KS | 26 | 16 | 5 | 5 | — | — | 1 | Seattle, WA | 94 | 61 | 25 | 5 | 1 | 2 | 7 |
| Kansas City, MO | 120 | 81 | 26 | 9 | 1 | 3 | 8 | Spokane, WA | 61 | 41 | 14 | 3 | 3 | — | 7 |
| Lincoln, NE | 35 | 26 | 9 | — | — | — | 2 | Tacoma, WA | 129 | 83 | 34 | 5 | 4 | 3 | 3 |
| Minneapolis, MN | 47 | 31 | 9 | 3 | 3 | 1 | 3 | Total[¶] | 10,253 | 6,813 | 2,432 | 607 | 224 | 173 | 663 |
| Omaha, NE | 86 | 57 | 21 | 5 | 3 | — | 6 | | | | | | | | |
| St. Louis, MO | 15 | 6 | 4 | 4 | 1 | — | — | | | | | | | | |
| St. Paul, MN | 51 | 39 | 10 | 2 | — | — | 4 | | | | | | | | |
| Wichita, KS | 73 | 52 | 17 | 3 | 1 | — | 8 | | | | | | | | |

U: Unavailable. —: No reported cases.

* Mortality data in this table are voluntarily reported from 122 cities in the United States, most of which have populations of >100,000. A death is reported by the place of its occurrence and by the week that the death certificate was filed. Fetal deaths are not included.

† Pneumonia and influenza.

§ Because of changes in reporting methods in this Pennsylvania city, these numbers are partial counts for the current week. Complete counts will be available in 4 to 6 weeks.

¶ Total includes unknown ages.

The *Morbidity and Mortality Weekly Report (MMWR)* Series is prepared by the Centers for Disease Control and Prevention (CDC) and is available free of charge in electronic format. To receive an electronic copy each week, visit *MMWR*'s free subscription page at <http://www.cdc.gov/mmwr/mmwrsubscribe.html>. Paper copy subscriptions are available through the Superintendent of Documents, U.S. Government Printing Office, Washington, DC 20402; telephone 202-512-1800.

Data presented by the Notifiable Disease Data Team and 122 Cities Mortality Data Team in the weekly *MMWR* are provisional, based on weekly reports to CDC by state health departments. Address all inquiries about the *MMWR* Series, including material to be considered for publication, to Editor, *MMWR* Series, Mailstop E-90, CDC, 1600 Clifton Rd., N.E., Atlanta, GA 30333 or to mmwrq@cdc.gov.

All material in the *MMWR* Series is in the public domain and may be used and reprinted without permission; citation as to source, however, is appreciated.

Use of trade names and commercial sources is for identification only and does not imply endorsement by the U.S. Department of Health and Human Services.

References to non-CDC sites on the Internet are provided as a service to *MMWR* readers and do not constitute or imply endorsement of these organizations or their programs by CDC or the U.S. Department of Health and Human Services. CDC is not responsible for the content of these sites. URL addresses listed in *MMWR* were current as of the date of publication.